



Town of Lynnfield
Lynnfield Rail Trail

Project Update
April 12, 2024





Agenda

1. Recent Field Work
2. Select Board Meeting
3. Project Phasing
4. Status of Lease and Insurance
5. Phragmites Removal
6. ROW List
7. Other Updates

Reedy Meadow Field Work Update

Recent Field Work

- Vegetation Cleared by 3/4.
- Wetland Flagging Confirmed 3/8.
- Geotechnical Collection Completed 3/22.
- Survey Work Completed 3/27.



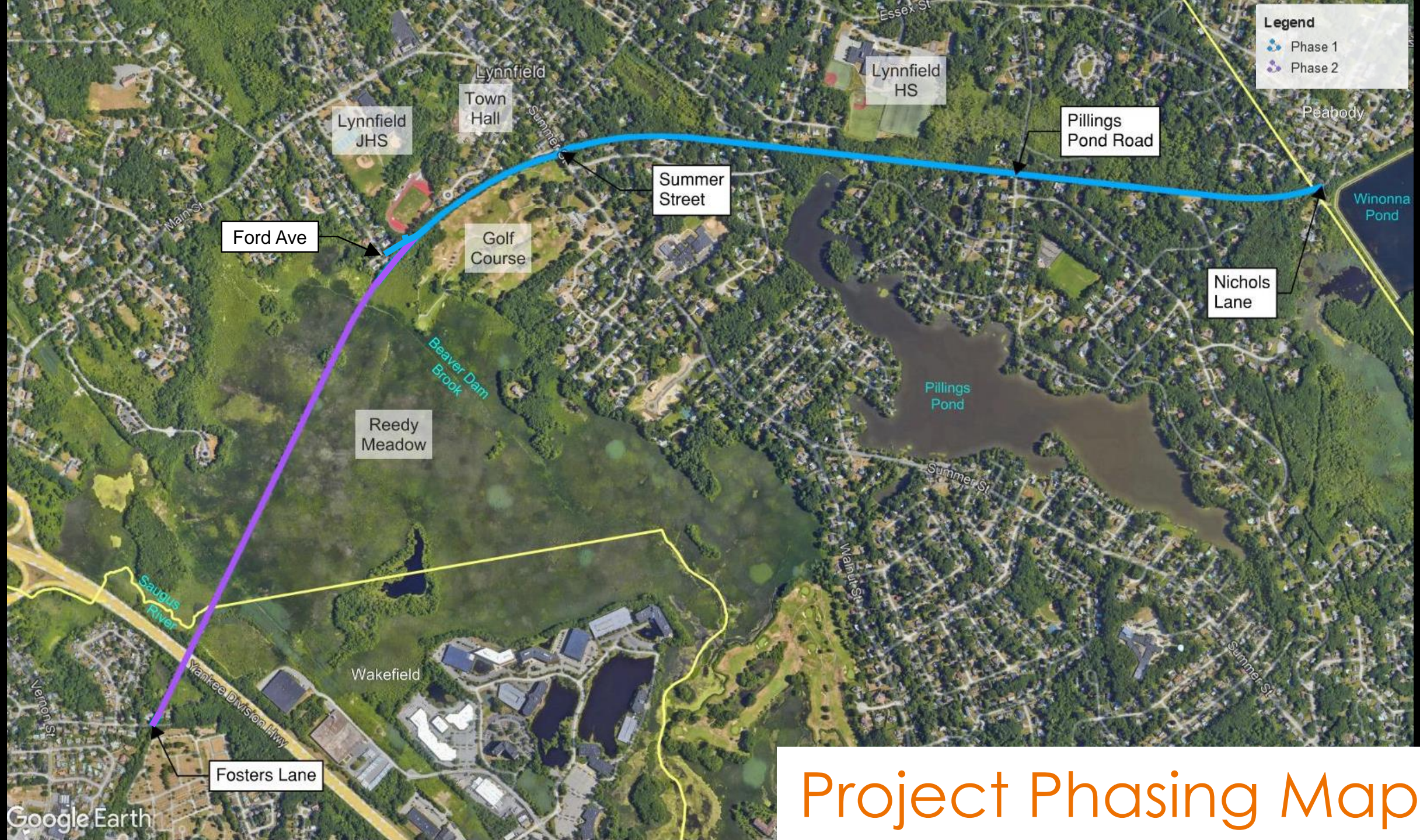
Trail Update at Select Board Meeting

Select Board Meeting

- Project Update Presented at Select Board Meeting on 2/26.
- Well attended by the community.
- Open question regarding project fencing / screening.



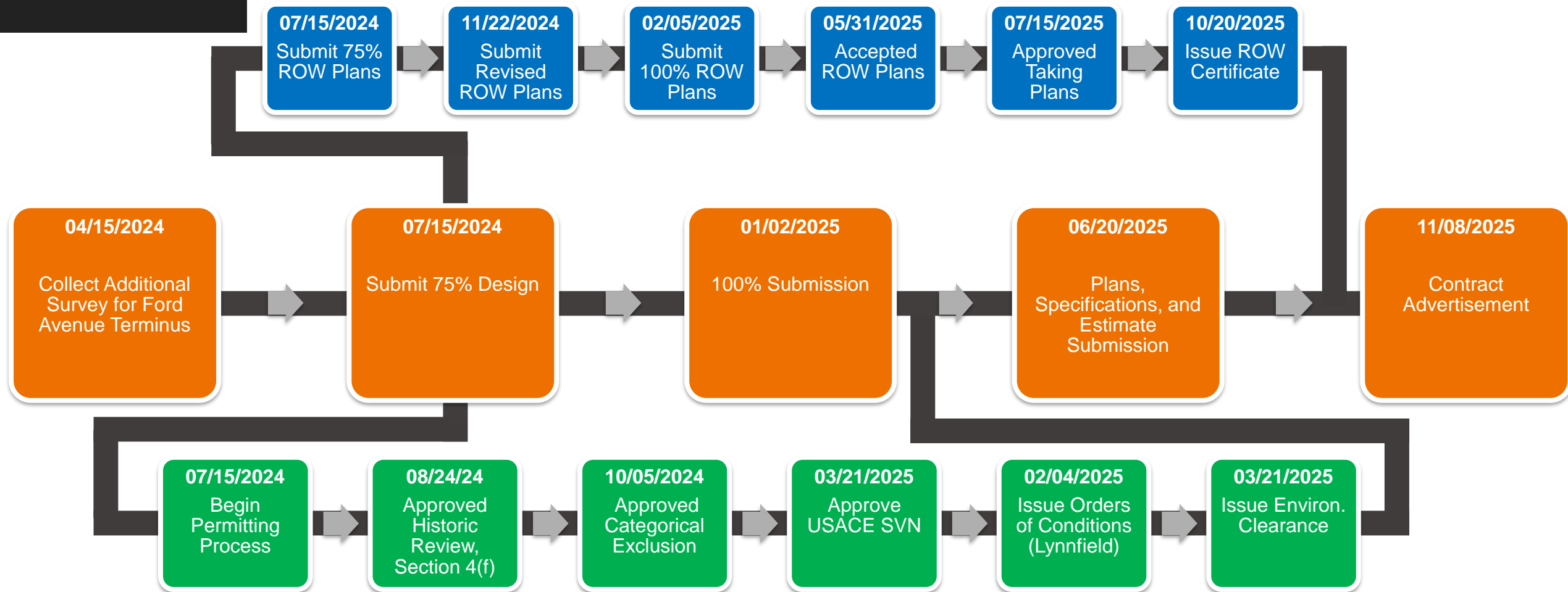
Photo from: <https://vimeo.com/917181561>



Project Phasing Map

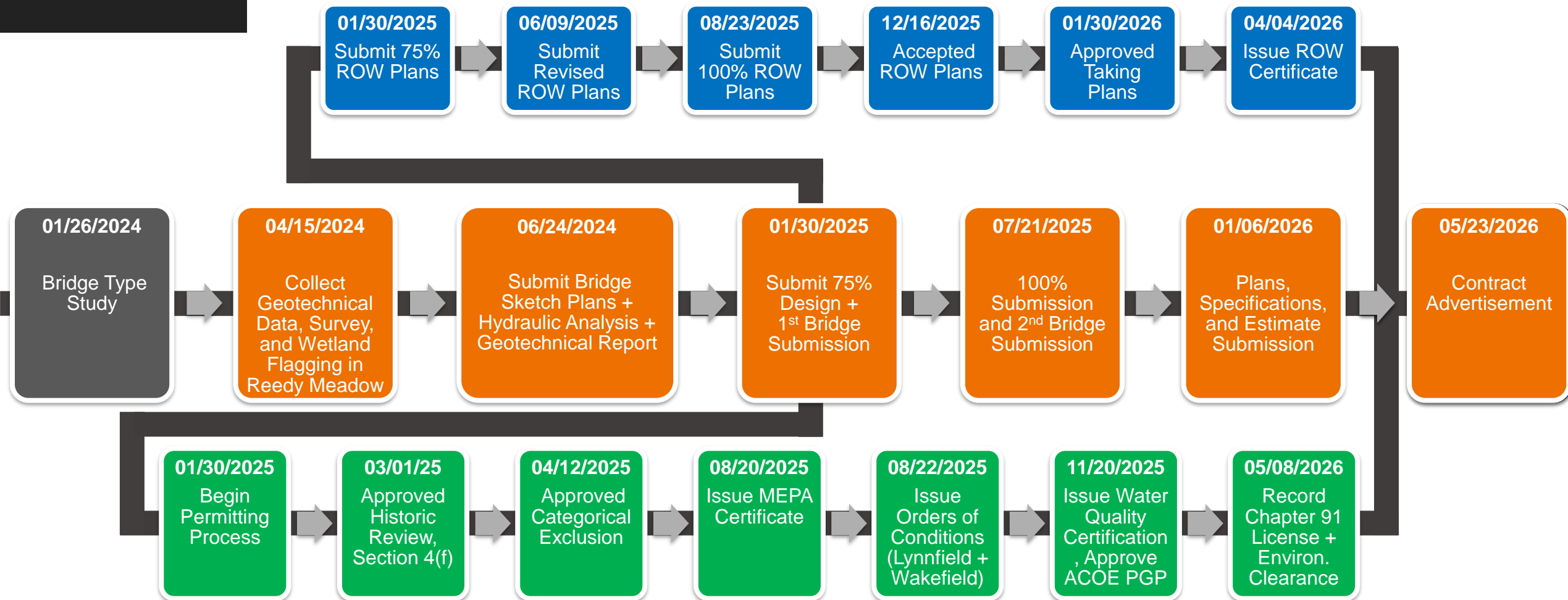
Phase 1 Schedule

Project Phasing



Phase 2 Schedule

Project Phasing



Schedule Comparison

Project Phasing

Phase 1

04/15/2024

Collect
Additional
Survey for
Ford Avenue
Terminus

07/15/2024

Submit 75%
Design

01/02/2025

100%
Submission

06/20/2025

Plans,
Specifications,
and Estimate
Submission

11/08/2025

Contract
Advertisement

Phase 2

01/26/2024

Bridge Type
Study

04/15/2024

Collect
Geotechnical
Data, Survey,
and Wetland
Flagging in
Reedy Meadow

06/24/2024

Submit Bridge
Sketch Plans +
Hydraulic Analysis +
Geotechnical Report

01/30/2025

Submit 75%
Design +
1st Bridge
Submission

07/21/2025

100%
Submission
and 2nd Bridge
Submission

01/06/2026

Plans,
Specifications,
and Estimate
Submission

05/23/2026

Contract
Advertisement

Cost Comparison

Project Phasing

	Phase 1	Phase 1 + 2
Subtotal (Sum of Bid Items)	\$4,378,036.50	\$23,117,511.50
25% Contingency	\$1,094,509.13	\$5,779,377.88
Contract Administration (10%)	\$437,803.65	\$2,311,751.15
Traffic Police (2%)	\$87,560.73	\$462,350.23
Utility Force Account	\$25,000	\$25,000.00
Total [2024]	\$6,022,910.01	\$31,695,990.76
Escalation Allowance (3% per year, 2 years to 2026)	\$366,795.22	\$1,930,285.84
Total [2026]	\$6,389,705.22	\$33,626,276.59

Next Steps

Project Phasing

Phase 1:

- Complete field survey updates for connection to Ford Avenue.
- Set up Meeting with MassDOT to discuss ROW (Scheduled 4/22).
- Set up Meeting with MPO to discuss funding (In Progress).
- Revise design plans for Phase 1 Limits for 75% Submission in July.

Phase 2:

- Evaluate at-grade trail through portion of Reedy Meadow to reduce cost.
- Approach FEMA to appeal new floodplain elevation.
- Continue through MassDOT process for the Structural Design.
- Coordinate with NHESP based on results of alternative investigation.

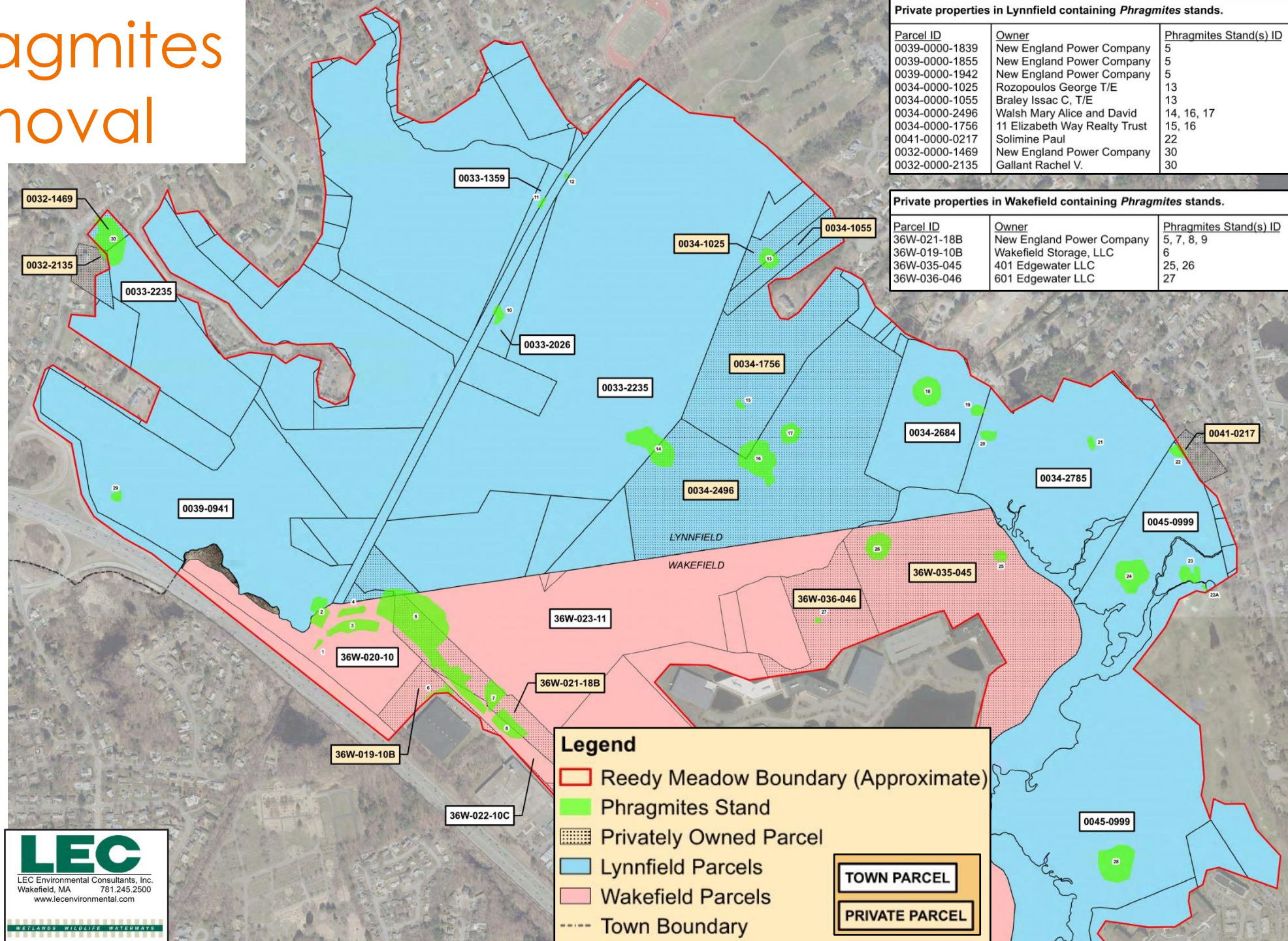
Status of MBTA Lease and Insurance

- Town has hired Anderson & Kreiger to initiate this process.
- Coordination Kickoff Meeting held on 4/10 to outline next steps.
- Anderson & Kreiger to send the Town a sample schedule of insurance.

Phragmites Removal

Phragmites Removal

- Lynnfield:
10 Private Parcels
- Wakefield:
4 Private Parcels
- Will discuss ROW approach with MassDOT on 4/22.



Right-of-Way (ROW) List

Right-of-Way
List

1 Town of Wakefield - Conservation Commission
Potential Article 97 (36W-020-010)

2 Town of Lynnfield - Conservation Commission
(0033 0000 2026)

3 St. Paul's Episcopal Church
(0029 0000 1059)


4 Town of Lynnfield – Town Hall
(0029 0000 2414)



ROW Next Steps

- MassDOT Project update meeting held on 3/18.
- Coordination Meeting with MassDOT ROW scheduled for 4/22.
- Discussion Topics will Include:
 - Project Phasing Update
 - Town Responsibilities for ROW process
 - Lease Agreement with MBTA
 - Article 97 Implications
 - Phragmites Removal Work
 - Corridor Encroachments

Other Updates

- it appears when the existing bridge was widened this was done with a closed bottom. When this needs to be replaced in 30 years or so it will be very difficult to do so. Has this been considered?
- RTE. 128 / I-95
- EXIST. CULVERT
- 10'-0" MIN. VERT. CLR.
- 12'-0" CLR.
- ±3'-4" CLR.
- 2x8 IPE CAP
- 4x6 LONG. STIFFENER (TYP.-3)
- W14 STRINGERS (TYP.-4)
- 100 YR. FLOOD EL. 75.1
- 10 YR. FLOOD EL. 73.5
- EXIST. FOOTING
- GLULAM DECK PANELS
- 6'-0" 6'-0"
- LYNNFIELD RAIL TRAIL / EXIST. CULVERT & RAIL
- 2x6 IPE RAIL (TYP.)
- 6x6 RAIL POST (TYP.)
- TOP OF PATH EL. 79.25
- C6 DIAPHRAGM
- (2) C15 PIER CAP
- 24" MIN.
- PROP. MICROPILE (TYP.)
- EXIST. PILES (TYP.)
- TYPICAL SECTION
STEEL
SUPERSTRUCTURE**
SCALE: 3/16" = 1'-0"
- PLATE NO. 20
- LYNNFIELD**
- BRIDGE NO. 1
LYNNFIELD RAIL TRAIL
OVER REEDY MEADOW
- TYPICAL SECTION
STEEL SUPERSTRUCTURE
- SHEET 20 OF 23 JANUARY 2024
-  **Stantec**

Hydraulic Analysis Update

Other Updates

- FEMA responded to our request for information on 4/10.
- Plan to follow up with FEMA as required to obtain additional information.





Questions

