

Welcome!

RAIL TRAIL EXTENSION, FROM THE GALVIN MIDDLE SCHOOL
TO LYNNFIELD / PEABODY TOWN LINE
Lynnfield & Wakefield | Project File No. 607329

DESIGN PUBLIC HEARING

Lynnfield Middle School
March 19, 2019 | 6:30 PM

Introduction

- Shahpar Negah, P.E., MassDOT Project Manager
- Linda Walsh - MassDOT Right-of-Way
- Representatives from the Town of Lynnfield
 - Robert Dolan, Town Administrator
 - John Tomasz, Director of Public Works
- Representatives from the Town of Wakefield
 - Stephen P. Maio, Town Administrator
 - Richard F. Stinson, Director of Public Works
 - William J. Renault, Jr., P.E. Town Engineer

Introduction

- Design Consultants
 - WorldTech Engineering, LLC
 - President – Richard J. Benevento
 - Project Manager / Vice President – William P. Mertz, PE
 - BETA Group, Inc
 - Landscape Architect - Randall L. Collins, Jr., RLA, ASLA
 - Project Engineer - William P. McGrath, PE
 - LEC Environmental Consultants
 - Ecological Services / President - Ann M. Marton

History of Public Outreach

- **Project Informational Meetings**
 - Held in April 2014 in Lynnfield and Wakefield
 - Project Team presented an overview of the project including funding sources, goals and objectives, and schedule.
- **Neighborhood Design Workshops**
 - Held on January 13, 2016 (Town of Wakefield)
 - Held on November 3, 2016 and March 27, 2018 (Town of Lynnfield)
 - Project team met with residents of each community to present the status of the project and exchange ideas on elements of the project in a workshop format.
- **MassDOT Right of Way (ROW) Coordination Meeting**
 - Held on May 16, 2017 in Lynnfield / Wakefield
 - Project team, including a representative from the MassDOT Right of Way Department, conducted a site walk and discussed the Right of Way Process with Town Officials from both Communities
- **MassDOT 25% Design Coordination Meeting**
 - Held on January 23, 2018 at MassDOT
 - Project team met with Town Officials to provide overview of proposed improvements, review the 25% Design Submittal, and discuss future development of the project



Project Team



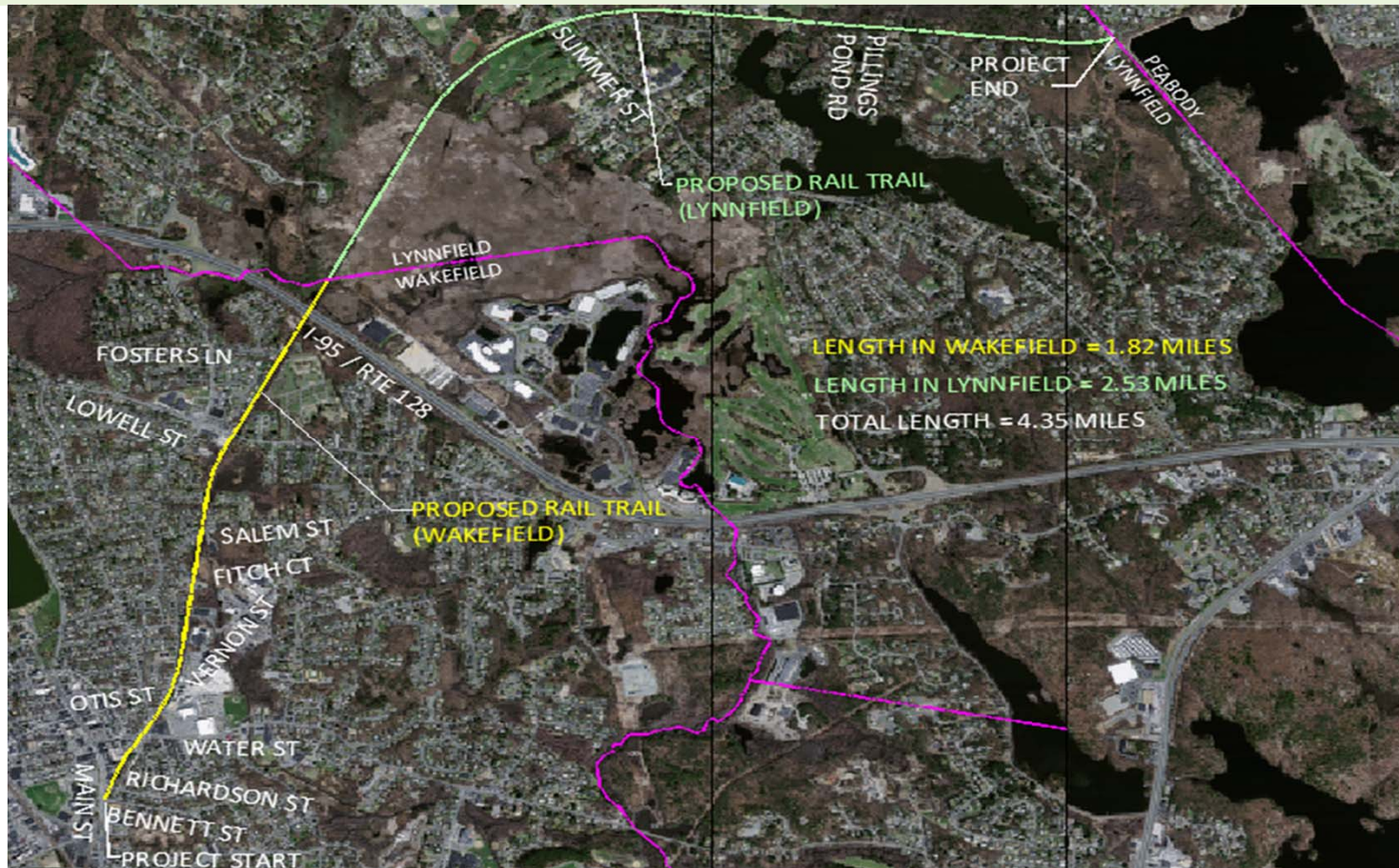
Towns of Lynnfield and Wakefield
Project Proponents

WorldTech Engineering, LLC
BETA Group, Inc
LEC Environmental Consultants
Responsible for Design

MassDOT's Highway Division
Responsible for administering the
Design Process and providing
Resident Engineer Services

Federal Highway Administration
Responsible for Oversight

Project Area



Galvin Middle School in Wakefield to the Lynnfield/Peabody Town Line
Limits of Work

Why do we need
this project?



Existing Issues

- Missing connection to the Border to Boston Trail, a proposed, 30-mile rail trail (or shared use path) via Peabody and Danvers linking eight Essex County communities
- Safety and security concerns associated with existing abandoned rail Right of Way;
- Lack of safe bicycle accommodations on local roadways in both communities accessing schools, residential areas, and commercial areas;
- Limited facilities to provide multi-modal recreation opportunities;
- Lack of ADA compliant crossings for both bike and pedestrians at roadway crossings;

Project Goals

- **Active Recreation** | Provide recreational opportunities such as walking and bicycling to increase physical activity, health, and provide an alternative mode of transportation other than motor vehicles;
- **Enhance Bicycle Accommodations** | Improve bicycle accommodations through repurposing the existing abandoned railroad Right of Way
- **Increase Intersection Safety / ADA Compliance** | Improve intersection safety and accessibility for all users by upgrading roadway crossings along the proposed Rail Trail route through both communities
- **Preserve Environmental Resources** | Provide for context sensitive solutions to preserve and protect the Reedy Meadow

Project Scope

- The proposed Lynnfield / Wakefield Rail Trail extends from the Galvin Middle School in Wakefield north to the Lynnfield/Peabody Town Line, a distance of approximately 4.4 miles;
- 1.82 miles of the trail is located within Wakefield;
- 2.53 miles of the trail is located within Lynnfield;
- Approximately 0.6 miles of the trail is located within the Reedy Meadow;
- Proposed 12 foot wide paved trail / linear park along existing railroad alignment;
- Elevated boardwalk structure crossing Reedy Meadow;
- At- Grade Intersection crossing enhancements;
- Landscaping and screening opportunities;
- Trail Amenities

Note: National Grid constructing electric transmission line and building portion of the trail in Wakefield from Main Street to Salem Street.

Project Schedule

25% Design Submittal
March 7, 2017
(Revised January 17, 2019)

Complete Design,
Permitting, and ROW
Process
Fall 2021

Design Public Hearing
March 19, 2019

Construction Starts
Spring 2022

*Construction funded through the State Transportation
Improvement Program (STIP) for FY 2021*

Alternatives

- Alternatives to the proposed project included the following:

On Street Bicycle Facilities

- Dedicated on street bike lanes
- Separated Bike Facilities
- Sharrows
 - Vehicular volumes, number of conflicts, and travel speed concerns

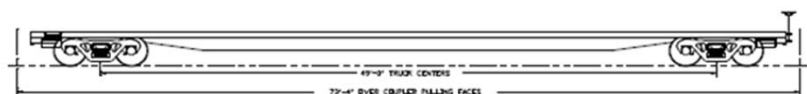


Alternatives

- Alternatives to the proposed project included the following:

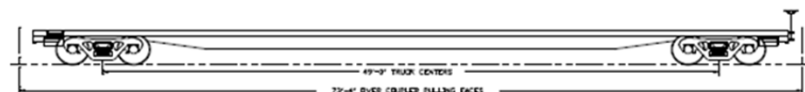
Abandoned Rail Car Re-Use

- Originally seen as an environmentally conscious solution for crossing the Reedy Meadow. Re-use of existing materials / rails.
- Shortfalls
 - Logistics
 - Procurement / Availability (70 Required)
 - Local Transport Issues / Access
 - Cost



Alternatives

- Alternatives to the proposed project included the following:



- Shortfalls (cont.)
 - Hydraulic Analysis - Use would result in raising of floodway water surface level elevation by 3 inches. Any rise considered a fatal flaw by regulatory agencies.
 - Geotechnical Analysis - Differential Settlement of surface elevation along rail car alignment approx. 2" – 3"

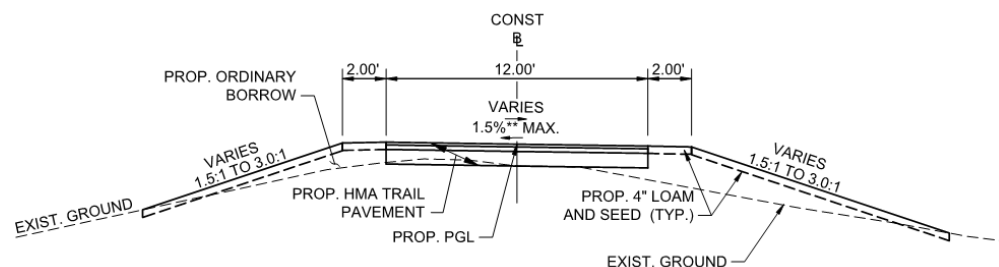




Proposed Improvements

Proposed Trail (Linear Park)

- Provide new asphalt recreational trail and trail amenities
 - Trail follows alignment and elevation of existing rail line;
 - Generally 12 feet wide (Reduced to 10 feet in resource areas)





Proposed Improvements

- Reedy Meadow Segment
 - Requires alternative solution to reduce environmental impacts;
 - Needs to address safety and emergency response;
 - Sustainable solution to reduce maintenance costs





Proposed Improvements

- Provide Elevated Boardwalk for trail section through the Reedy Meadow
 - Composite decking material, reduce long term maintenance costs;
 - Foundation supports reduce environmental impacts;
 - Designed to accommodate emergency vehicles





Proposed Improvements

At-Grade Street Crossings - Wakefield

- Richardson Street
- Water Street
- New Salem Street
- Lowell Street
- Fosters Lane

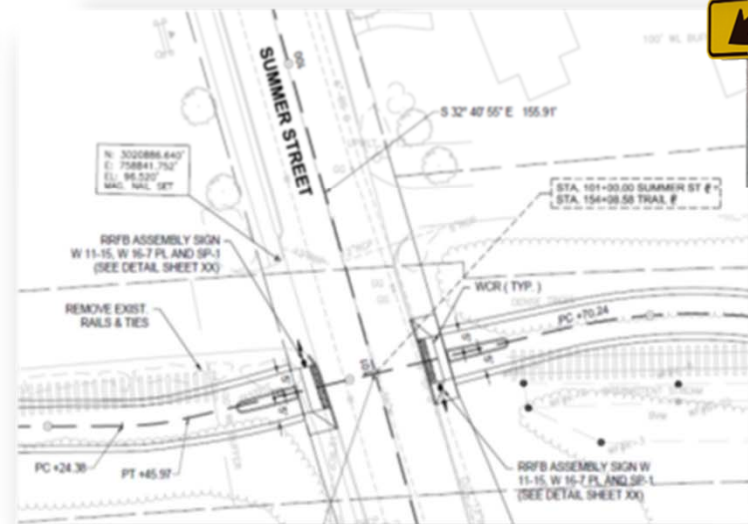
At-Grade Street Crossings - Lynnfield

- Summer Street
- Pillings Pond Road



Proposed Improvements

- At-Grade Street Crossings
 - Improved sight distance and advanced warning signs;
 - Installation of Rapid Flashing Beacons at Crossing;
 - Trailhead / Entry Layout Amenities





Proposed Improvements





Proposed Improvements





Proposed Improvements

- Landscape Amenities and Features
 - Trailhead and Path Design
 - Information Kiosks
 - Interpretive Signage
 - Trail Markers
 - Benches and Bike Racks
 - Low Maintenance Plantings



Trash Receptacle



Bike Rack



Bench



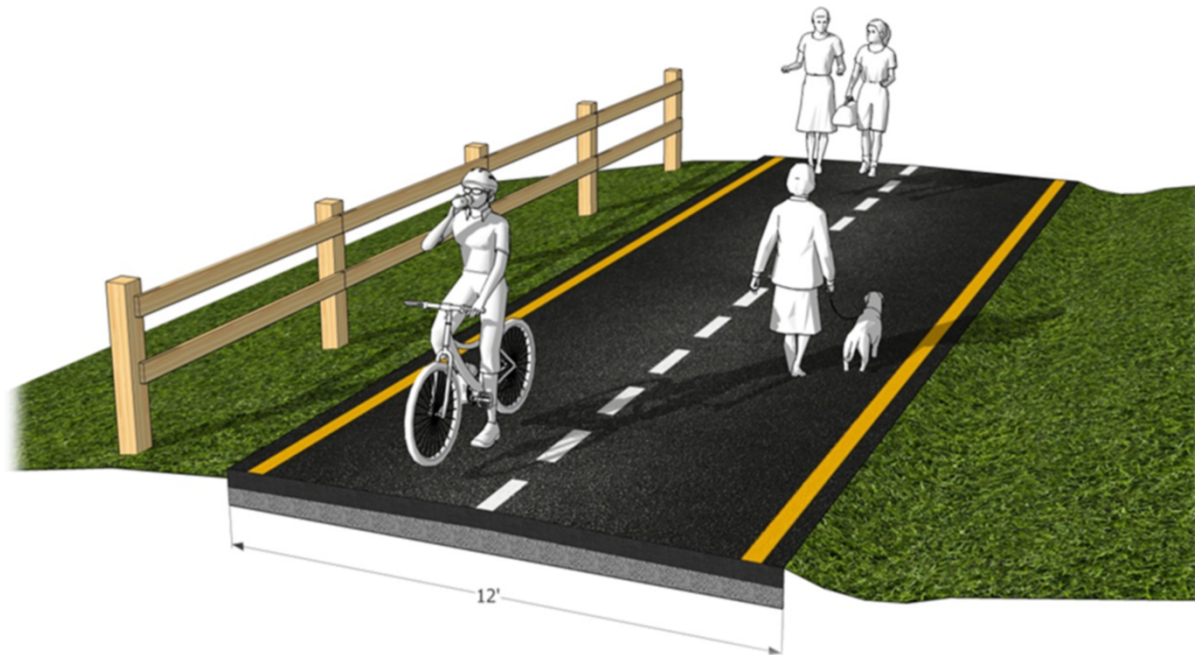
Planters





Proposed Improvements

- Landscape Screening Alternatives
 - Screening and Fencing Alternatives to be evaluated.....





Proposed Improvements

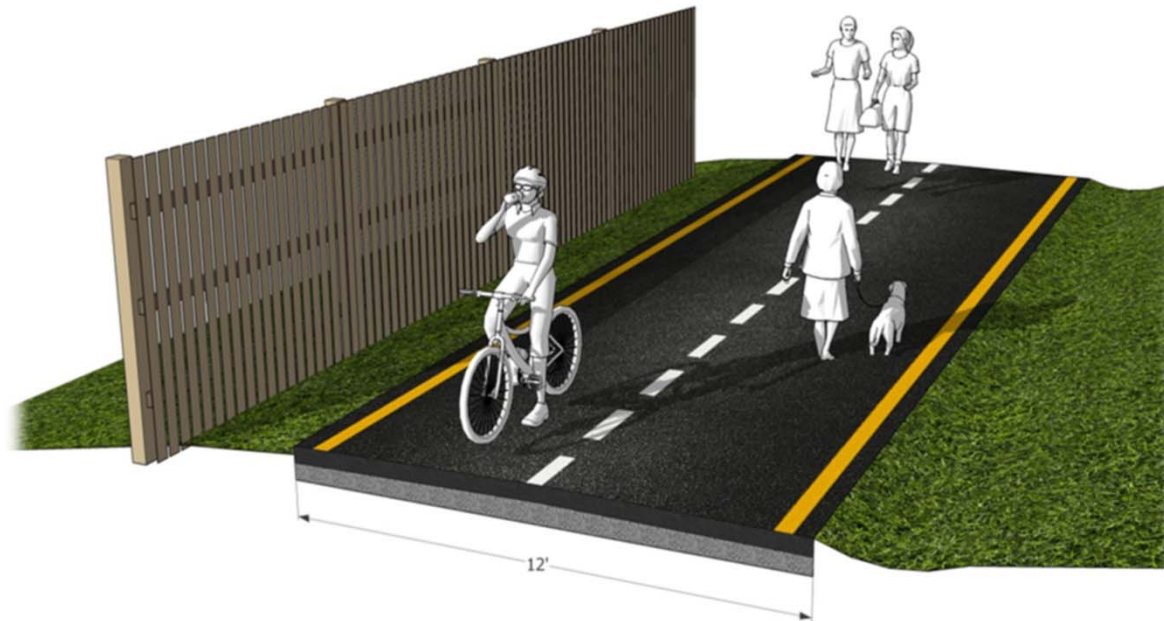
- Landscape Screening Alternatives
 - Screening and Fencing Alternatives to be evaluated.....





Proposed Improvements

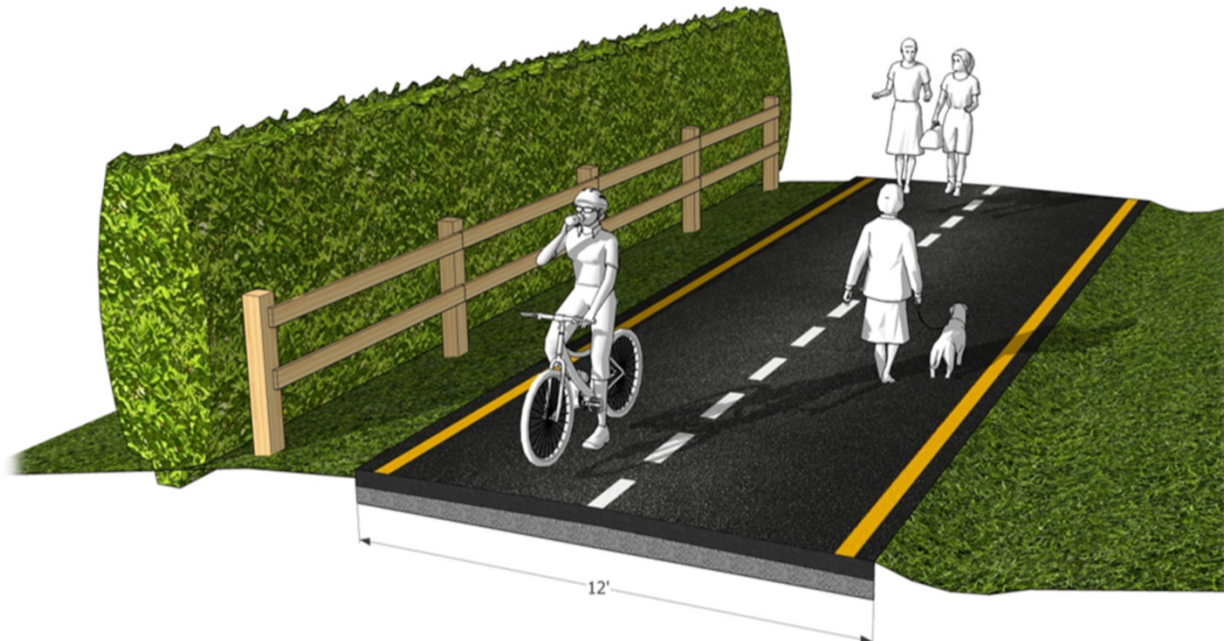
- Landscape Screening Alternatives
 - Screening and Fencing Alternatives to be evaluated.....





Proposed Improvements

- Landscape Screening Alternatives
 - Screening and Fencing Alternatives to be evaluated.....



Environmental Permitting



- MEPA/NEPA (National Environ. Policy Act)
 - **Environmental Notification Form-ENF (MEPA)**
 - **Categorical Exclusion Checklist (NEPA)**
 - **Completed after the Design Public Hearing**
- USACE Preconstruction Notification
- DEP Water Quality Certification
- NHESP (Natural Heritage & Endangered Species Program)
 - **Ongoing Consultation and Coordination**
- Local Conservation Commission Filings
 - **Residents will have opportunity to review the Notice of Intent as part of each communities Conservation Commission hearings.**
- Oversight by MassDOT Environmental Section

How will traffic
be affected?





ALERT: Traffic Impacts

- Majority of work located on cross country rail bed alignment (off street);
- For at-grade crossing locations - temporary shifting of traffic using signage and police details;
- Temporary pedestrian detours (*as needed*) will ensure accessible routes throughout the duration of construction;
 - Temporary ramps and pedestrian detour signage with sidewalk impacts
- Construction operations will be coordinated with Town Officials to reduce traffic impacts during peak hours;
 - Temporary road closures may be anticipated (i.e. final paving)
- Limited impacts to daily operation of area schools.

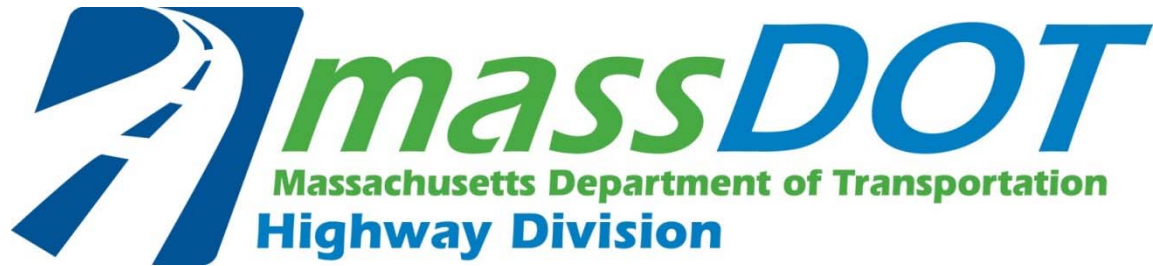
Next Steps/Meeting

- Submission of 75% & Final Design Plans, Specifications, Estimate (PS&E) to MassDOT for approval
- Right of Way Coordination
 - Temporary Easements
 - Limited Impacts to adjacent properties (i.e. regrading of driveway aprons, loam and seed at back of sidewalk)
- Project award & start of construction
 - Start of construction Spring 2022
 - Funding and Contract Management/Resident Engineering Services by MassDOT

Contact Information



- Communication regarding project:
 - Mail-in comment sheets
 - Contact Person; Shahpar Negah
 - E| Shahpar.Negah@dot.state.ma.us
 - P| 857.368.9339



Thank You

Q&A

RAIL TRAIL EXTENSION, FROM THE GALVIN MIDDLE SCHOOL
TO LYNNFIELD / PEABODY TOWN LINE

Lynnfield & Wakefield | Project File No. 607329

DESIGN PUBLIC HEARING

Lynnfield Middle School
March 19, 2019 | 6:30 PM