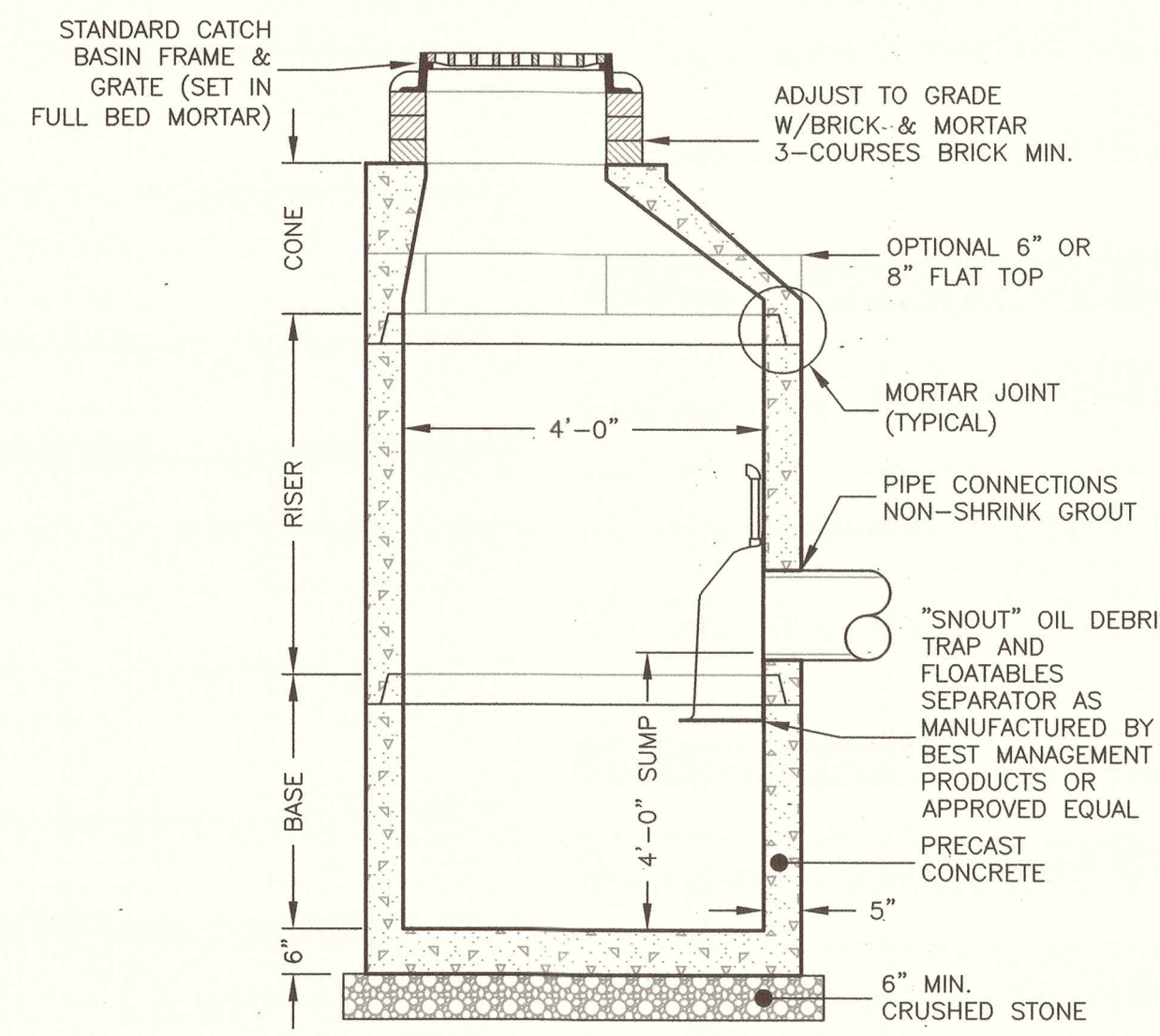
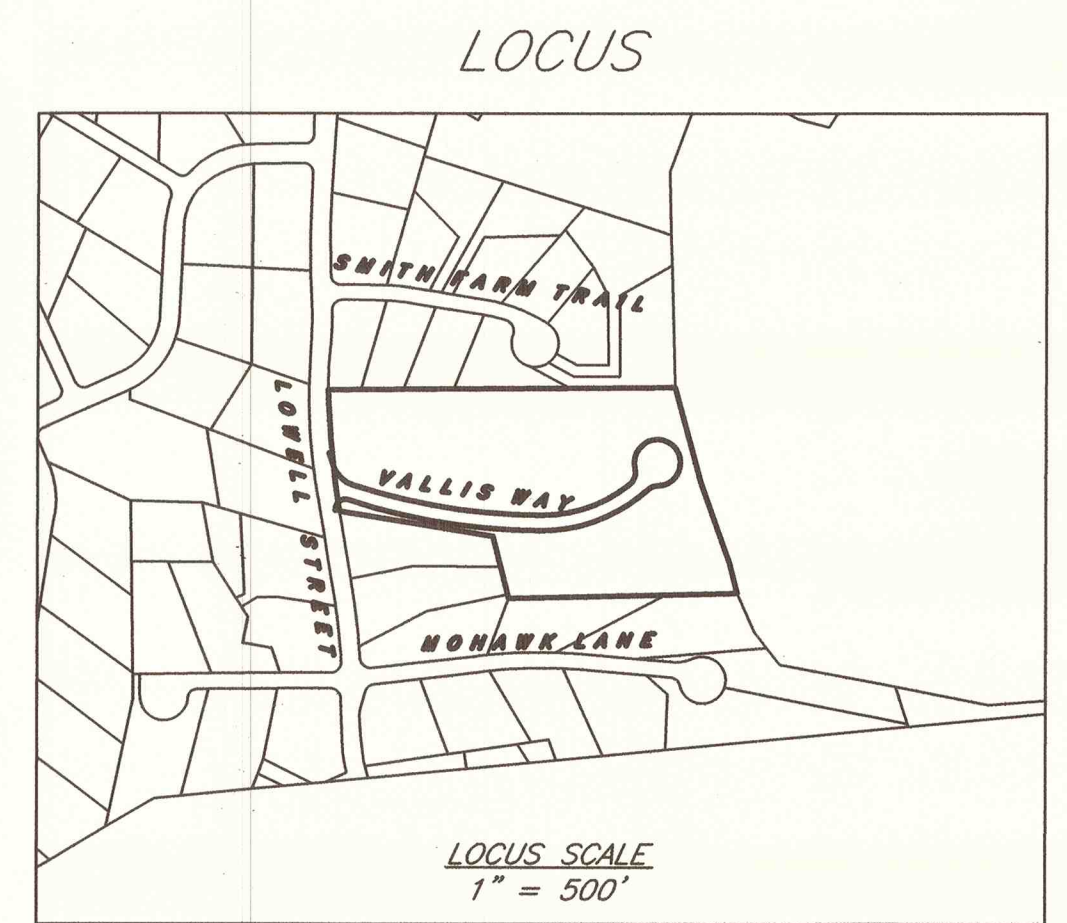
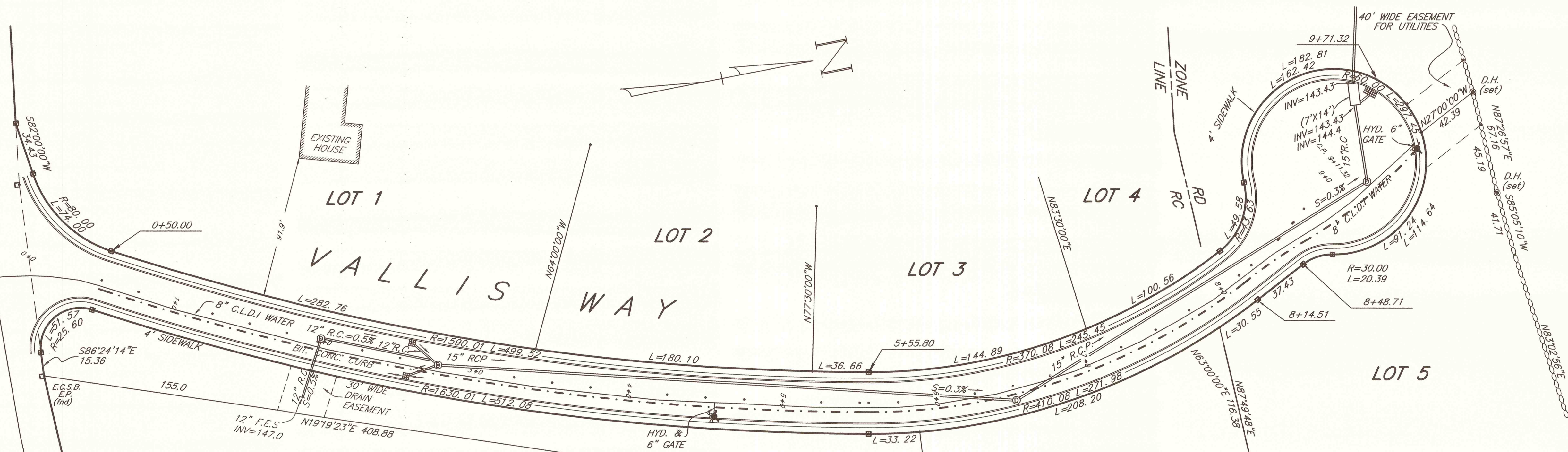


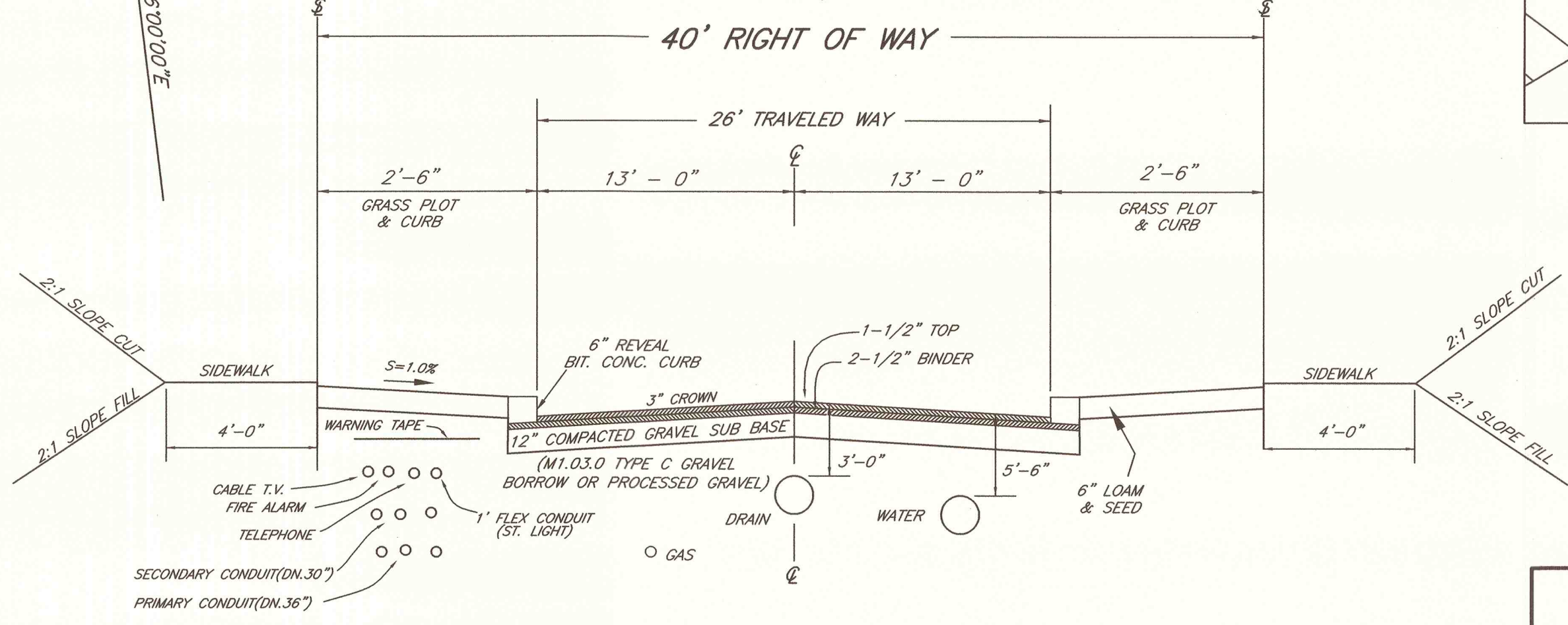
LOWELL STREET
(COUNTY LAYOUT 1975)

LOWELL STREET



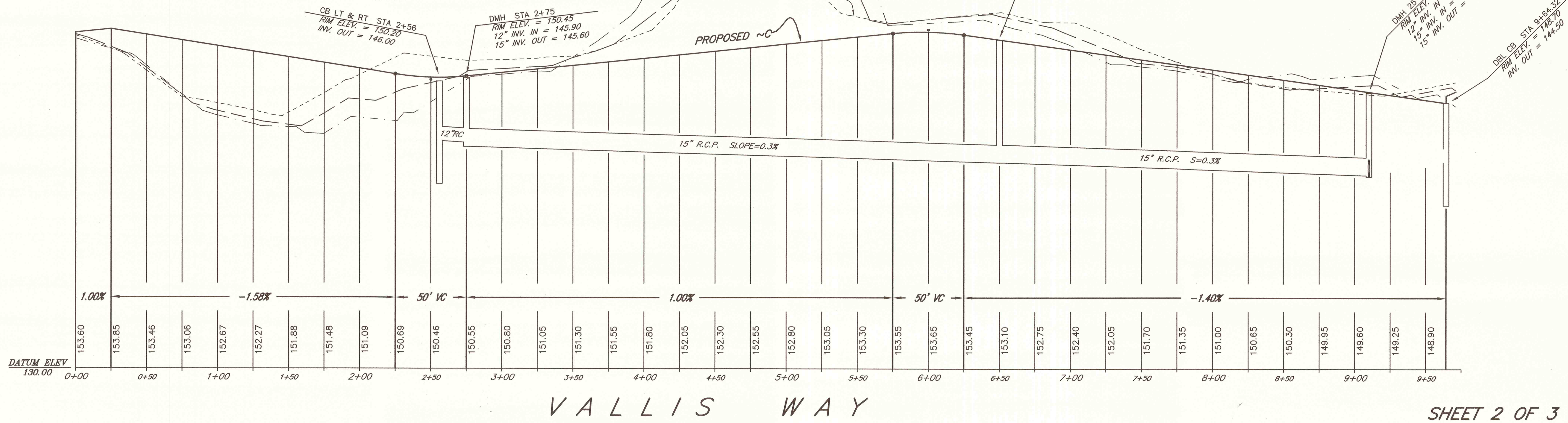
PRE-CAST CATCH BASIN
NOT TO SCALE

- NOTES:
1. CONCRETE: 4,000 PSI MINIMUM AFTER 28 DAYS.
 2. REINFORCED STEEL CONFORMS TO LATEST ASTM A185 SPEC. 0.12 SQ. IN./LINEAL FT. AND 0.12 SQ. IN. (BOTH WAYS) BASE BOTTOM.
 3. H-20 DESIGN LOADING PER AASHTO HS-20-44; ASTM C478 SPEC FOR "PRECAST REINFORCED CONCRETE MANHOLE SECTIONS."

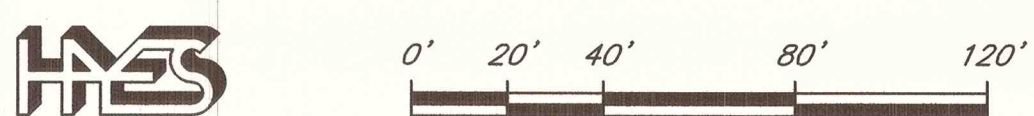


TYPICAL ROADWAY CROSS SECTION
NOT TO SCALE

LOT NO.	FRONTAGE	UPLAND AREA	ZONE
1	317 ft.	102,294 s.f.	RC
2	180 ft.	46,572 s.f.	RC
3	180 ft.	45,682 s.f.	RC
4	252 ft.	61,484 s.f.	RD
5	182 ft.	60,554 s.f.	RD
6	206 ft.	41,143 s.f.	RC
7	566 ft.	41,662 s.f.	RC



■ DENOTES STONE BOUND TO BE SET BY OWNER UNLESS OTHERWISE NOTED.



**PRELIMINARY PLAN & PROFILE
VALLIS WAY
LYNNFIELD, MASS**

OWNER:
LINDA VALLIS
109 LOWELL STREET
LYNNFIELD, MASS. 01940
SCALE: 1" = 40'

ENGINEER:
HAYES ENGINEERING, INC.
603 SALEM STREET
WAKEFIELD, MASS. 01880
DATE: OCTOBER 7, 2020

LYNNFIELD PLANNING BOARD