

NO.	DATE	REVISION
1	2/12/2021	PEER REVIEW COMMENTS
2	2/18/2021	PEER REVIEW COMMENTS
3	3/4/2021	PEER REVIEW COMMENTS

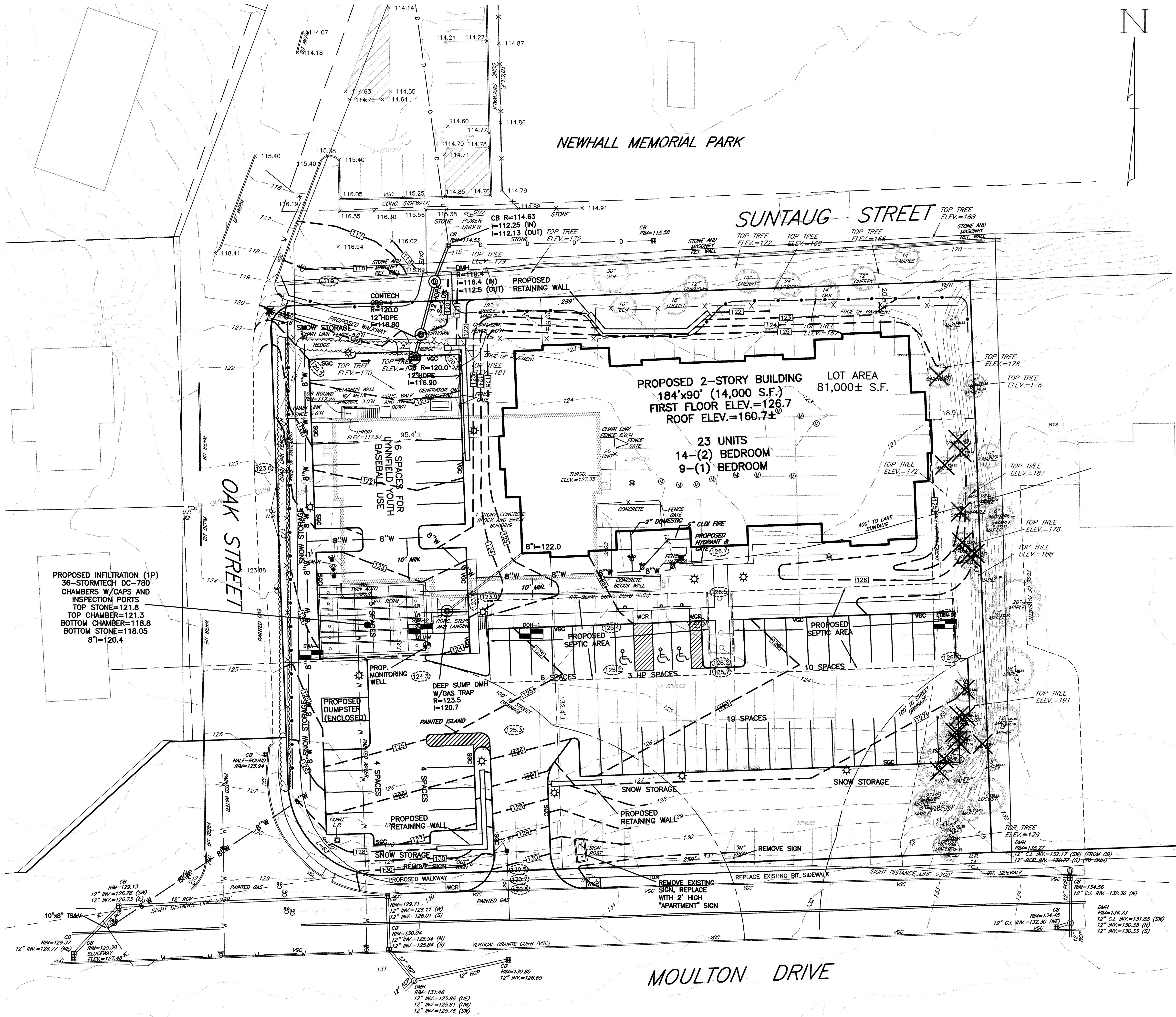
Scale: 1"=20'
0' 10' 20' 40'
Date: July 6, 2018

SITE PLAN
#160 MOULTON DRIVE
BALI HAI APARTMENTS
LYNNFIELD, MASS.

C1

ZONING TABLE		
ZONE	REQUIRED/ALLOWED	PROPOSED
SINGLE RESIDENCE A		
DIMENSIONAL CONTROLS		
FRONT SETBACK TO CENTERLINE	50 ft.	150± ft.
FRONT YARD SETBACK	30 ft.	130± ft.
SIDE YARD SETBACK	15 ft.	18± ft.
REAR YARD SETBACK	20 ft.	21± ft.
MIN. FRONTAGE	110 ft.	259± ft.
MIN. LOT AREA	15,000 s.f.	81,000± s.f.
MAX. BUILDING HEIGHT	40 ft.	± ft.
MAX. LOT COVERAGE (bldgs.)	35%	17±%
PARKING	--	55 spaces

EXISTING IMPERVIOUS AREA = 58,534 S.F. (72%)
PROPOSED IMPERVIOUS AREA = 42,480 S.F. (52%)
CHANGE IN IMPERVIOUSNESS = -16,054 S.F.



SHEET INDEX	
PLAN TITLE	SHEET DESIGNATION
SITE PLAN	C1
EXISTING CONDITION	C2
LIGHTING PLAN	C3
DETAILS	C4
EROSION CONTROL	C5

