

PROPOSED COMMERCIAL BUILDING

922 Newbury Street
(Tax Map 53 Lot 2586)
Lynnfield, Massachusetts 01904

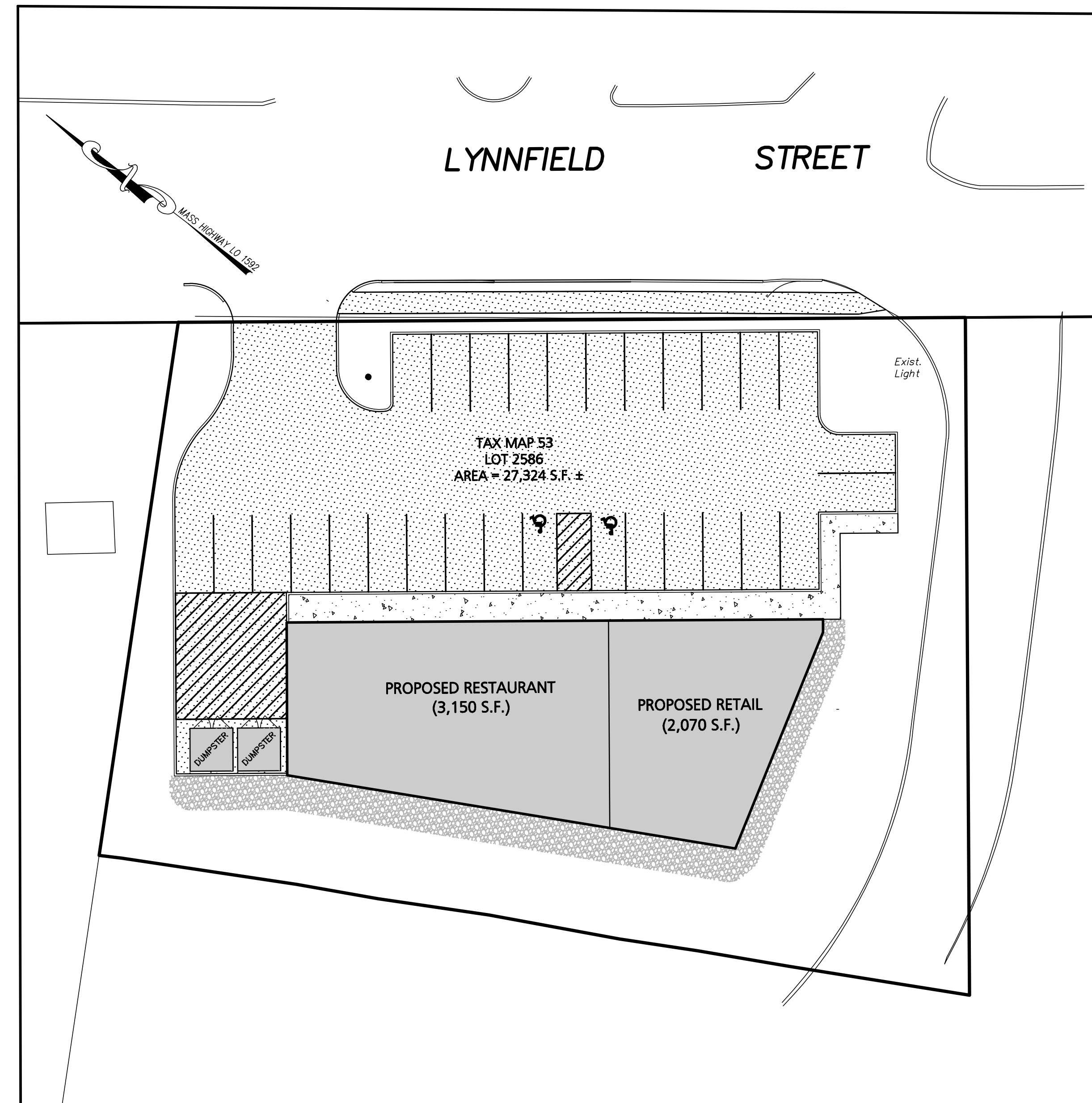


LOCUS MAP

OWNER:
NOTO PARTNERS, LLC
49 WATER STREET
WAKEFIELD, MA 01880

CIVIL ENGINEER:
ENGINEERING ALLIANCE, INC.
194 CENTRAL STREET
SAUGUS, MA 01906
(781) 231-1349

LAND SURVEYOR:
OTTE & DWYER, INC.
59 APPLETON STREET
SAUGUS, MA 01906
(781) 233-8155



KEY MAP
SCALE: 1"=20'

PREPARED BY:

Engineering Alliance, Inc.
Civil Engineering & Land Planning Consultants
194 Central Street
Saugus, MA 01906
Tel: (781) 231-1349
Fax: (781) 417-0020

PREPARED FOR:
NOTO PARTNERS, LLC
49 WATER STREET
WAKEFIELD, MA 01880

SHEET NUMBER AND TITLE

- C-0 COVER SHEET
- C-1 EXISTING CONDITIONS PLAN
- C-2 SITE LAYOUT PLAN
- C-3 GRADING, DRAINAGE & UTILITIES
- L-1 TREE PROTECTION ZONE INVENTORY PLAN
- L-2 LANDSCAPE PLAN
- D-1 CONSTRUCTION DETAILS I
- D-2 CONSTRUCTION DETAILS II

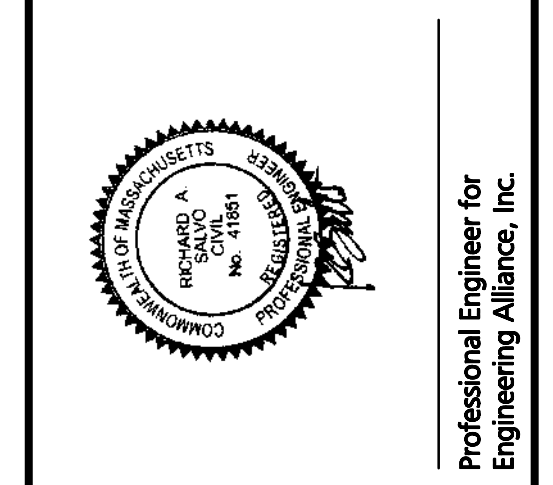
DATE	DESCRIPTION OF REVISION

PREPARED BY:
Engineering Alliance, Inc.
Civil Engineering & Land Planning Consultants
194 Central Street
Saugus, MA 01906
Tel: (781) 231-1349
Fax: (781) 417-0020

PROJECT: **Proposed Site Plan**
922 Lynnfield Street
(Tax Map 53 Lot 2586)
Lynnfield, Massachusetts

PROJECT #: 22-82701
DATE: December 22, 2022
SCALE: AS NOTED
DWG FILE NAME: 22-82701

DESIGN BY: Calvin Reach
CHECKED BY: Richard A. Savo, P.E.



APPLICANT: **Noto Partners, LLC**
49 Water Street
Wakefield, MA 01880

DWG. NO. **C-0**
DRAWING TITLE: **Cover Sheet**



CITY OF LYNN
TOWN OF LYNNFIELD

GENERAL UTILITY NOTES

THE CONTRACTOR IS SPECIFICALLY CAUTIONED THAT THE LOCATION AND/OR ELEVATION OF EXISTING UTILITIES AND STRUCTURES AS SHOWN ON THESE PLANS IS BASED ON RECORDS OF VARIOUS UTILITY COMPANIES AND WHERE POSSIBLE, MEASUREMENTS TAKEN IN THE FIELD. THIS INFORMATION IS NOT TO BE RELIED UPON AS BEING EXACT OR COMPLETE. THE LOCATION OF ALL UNDERGROUND UTILITIES AND STRUCTURES SHALL BE VERIFIED IN THE FIELD BY THE CONTRACTOR PRIOR TO THE START OF CONSTRUCTION. THE CONTRACTOR MUST CONTACT THE APPROPRIATE UTILITY COMPANY, ANY GOVERNING PERMITTING AUTHORITY, AND "DIGSAFE" AT LEAST 72 HOURS PRIOR TO ANY EXCAVATION WORK TO REQUEST EXACT FIELD LOCATION OF UTILITIES AND THE ENGINEER SHALL BE NOTIFIED IN WRITING OF ANY UTILITIES INTERFERING WITH THE PROPOSED CONSTRUCTION AND APPROPRIATE REMEDIAL ACTION TAKEN BEFORE PROCEEDING WITH THE WORK. IT SHALL BE THE RESPONSIBILITY OF THE CONTRACTOR TO RELOCATE ALL EXISTING UTILITIES WHICH CONFLICT WITH THE PROPOSED IMPROVEMENTS SHOWN ON THE PLAN.

THE CONTRACTOR SHALL BE RESPONSIBLE FOR ESTABLISHING AND MAINTAINING ALL CONTROL POINTS AND BENCHMARKS NECESSARY FOR THE WORK.

THE CONTRACTOR SHALL EXCAVATE THE TEST PITS PRIOR TO COMMENCING WORK TO VERIFY THE ELEVATIONS AND LOCATIONS OF EXISTING UTILITIES. THE CONTRACTOR SHALL PROVIDE THE OWNER AND ENGINEER WITH THE RESULTS PRIOR TO COMMENCING ANY WORK.

ALL WATER SERVICES SHALL BE INSTALLED WITH 5' OF COVER EXCEPT AS NOTED OR DETAILED OTHERWISE.

A MINIMUM OF 10 FEET CLEAR HORIZONTALLY SHALL BE MAINTAINED BETWEEN SANITARY SEWER MAINS AND WATER MAINS. WHENEVER CONDITIONS PREVENT A LATERAL SEPARATION OF 10 FEET TO A WATER MAIN THE ELEVATION OF THE CROWN OF THE SEWER SHALL BE AT LEAST 18 INCHES BELOW THE INVERT OF THE WATER MAIN.

DOMESTIC WATER SERVICES 2 INCHES AND SMALLER SHALL BE TYPE K COPPER TUBING AND SHALL BE INSTALLED WITH APPROPRIATELY SIZED CORPORATION STOP WITH APPROVED SADDLE, CURB STOP, GATE AND BOX.

ALL WATER MAIN APPURTENANCES, MATERIALS, METHODS OF INSTALLATION AND TESTING SHALL MEET OR EXCEED ALL LOCAL MUNICIPAL REQUIREMENTS.

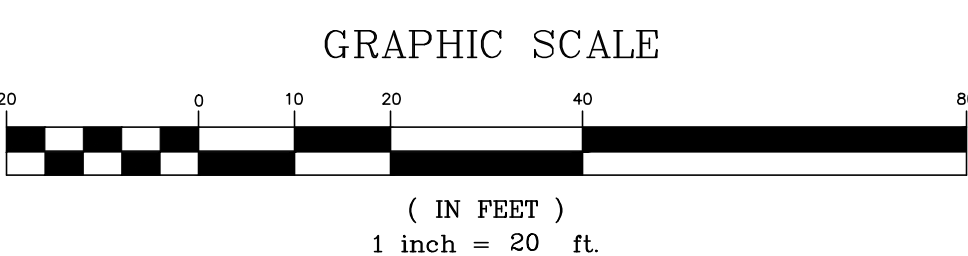
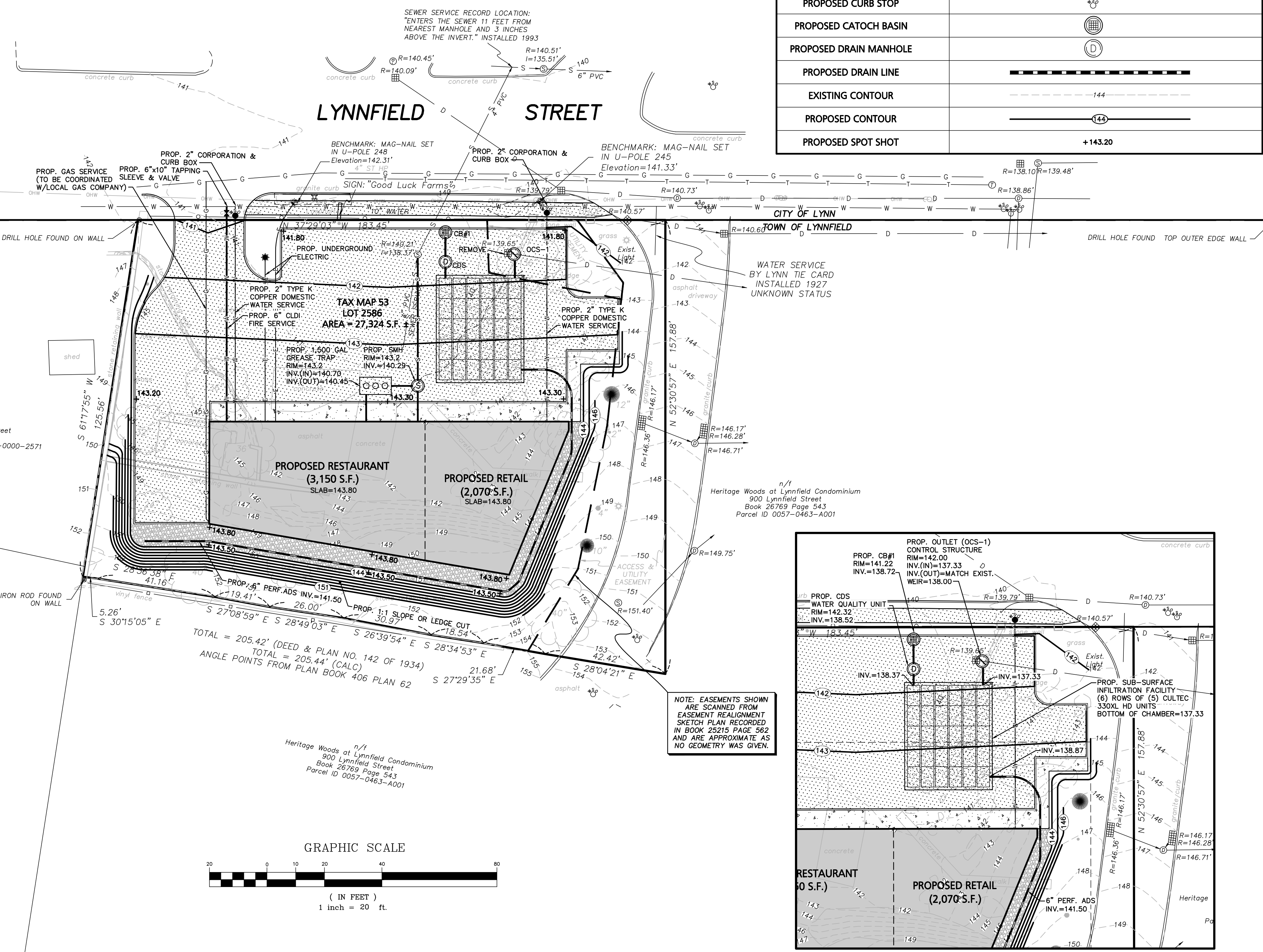
WHERE SANITARY SEWERS CROSS WATER MAINS, THE SEWER SHALL BE LAID AT SUCH AN ELEVATION THAT THE CROWN OF THE SEWER IS AT LEAST 18 INCHES BELOW THE INVERT OF THE WATER MAIN. IF THE ELEVATION OF THE SEWER CANNOT BE VARIED TO MEET THIS REQUIREMENT, THE WATER MAIN SHALL BE RELOCATED TO PROVIDE THIS SEPARATION OR CONSTRUCTED WITH MECHANICAL-JOINT PIPE FOR A DISTANCE OF 10 FEET ON EACH SIDE OF THE SEWER. ONE FULL LENGTH OF WATER MAIN SHALL BE CENTERED OVER THE SEWER SO THAT BOTH JOINTS WILL BE AS FAR FROM THE SEWER AS POSSIBLE. WHENEVER IT IS IMPOSSIBLE TO OBTAIN VERTICAL SEPARATION AS STIPULATED ABOVE, BOTH THE WATER MAIN AND THE SEWER MAIN SHALL BE ENCASED IN CONCRETE FOR A MINIMUM DISTANCE OF 10 FEET FROM THE CROSSING POINT OF THE OTHER PIPE AS MEASURED NORMALLY FROM ALL POINTS ALONG THE PIPE.

PROPOSED GAS SERVICE LOCATIONS SHALL BE ESTABLISHED BY THE CONTRACTOR. THE CONTRACTOR SHALL CONFIRM WITH THE GAS COMPANY THAT THE GAS LINE INSTALLATION SHALL BE BY THE LOCAL GAS COMPANY. THE CONTRACTOR SHALL GIVE THE GAS COMPANY ADVANCE NOTICE OF WHEN THE GAS LINE CAN BE INSTALLED.

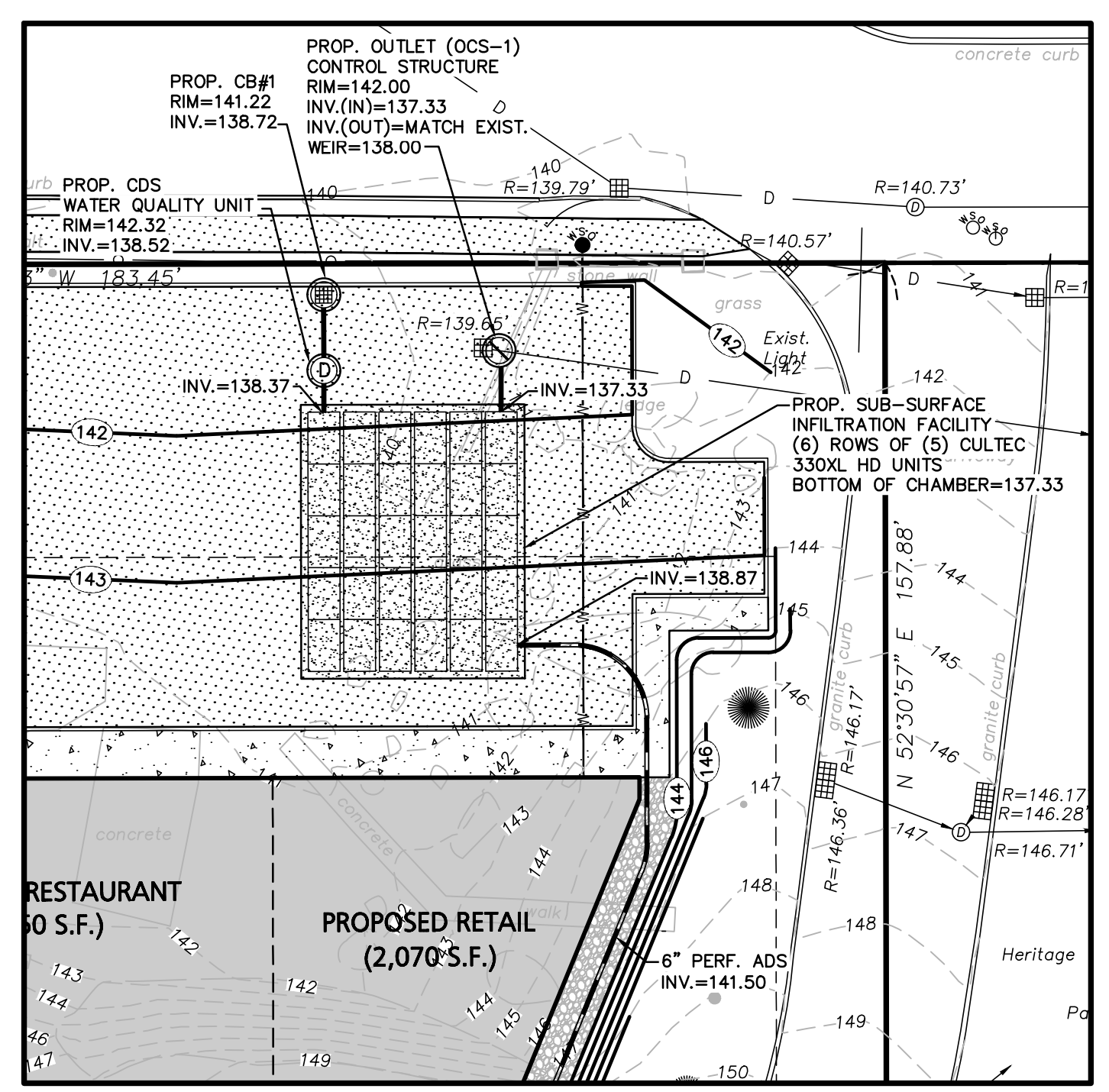
ALL PROPOSED WORK SHALL BE PERFORMED IN FULL COMPLIANCE WITH THE TOWN OF LYNNFIELD REQUIREMENTS. THE CONTRACTOR SHALL NOTIFY THE TOWN OF LYNNFIELD PRIOR TO THE COMMENCEMENT OF ANY UTILITY WORK.

DRAINAGE NOTES:

- ALL STORM DRAINAGE PIPES SHALL BE 12" HIGH DENSITY POLYETHYLENE PIPE (H.D.P.E.) CORRUGATED OUTSIDE & SMOOTH INSIDE UNLESS NOTED OTHERWISE.
- ALL DRAIN PIPES SHALL BE INSTALLED AT 0.01 FT/FT (1%) UNLESS NOTED OTHERWISE.
- REFER TO ARCHITECTURAL DRAWINGS FOR ALL SERVICE CONNECTIONS (I.E., ROOF DRAINS, WATER AND SEWER SERVICES, ETC.) WITHIN 10'-FT OF THE BUILDING WALLS.
- ALL ROOF DRAIN CONNECTIONS ARE TO BE COORDINATED WITH THE ARCHITECTURAL DRAWINGS.
- DURING THE SITE PREPARATION PHASE OF THIS PROJECT THE CONTRACTOR SHALL EXCAVATE A TEST PIT AT THE LOCATION OF OCS-1 IN ORDER TO DETERMINE THE EXACT INVERT OF THE EXISTING DRAIN. THE CONTRACTOR SHALL PROVIDE THE INFORMATION TO THE ENGINEER PRIOR TO THE COMMENCEMENT OF ANY DRAINAGE WORK.

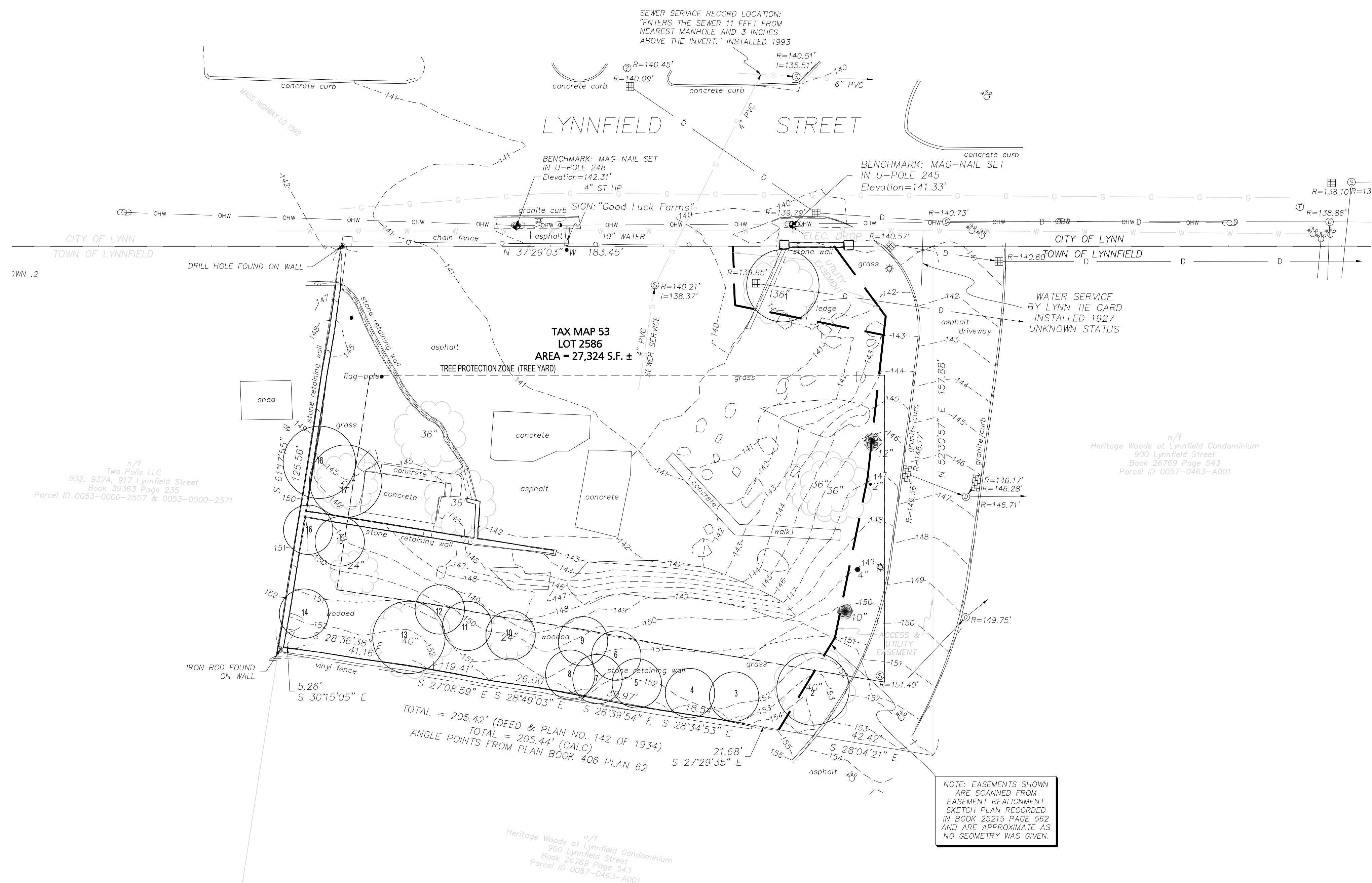
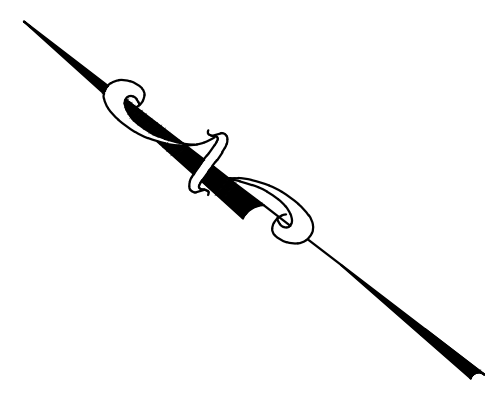


LEGEND - GRADING, DRAINAGE & UTILITY PLAN	
PROPERTY LINE	—————
BUILDING	▬▬▬▬▬
PROPOSED WATER LINE	— W — W — W —
PROPOSED SEWER LINE	— S — S — S —
EXISTING WATER LINE	— W — W — W —
EXISTING SEWER LINE	— S — S — S —
PROPOSED CURB STOP	⊕
PROPOSED CATOCH BASIN	⊕
PROPOSED DRAIN MANHOLE	⊕
PROPOSED DRAIN LINE	— — — — —
EXISTING CONTOUR	— 144 —
PROPOSED CONTOUR	— 144 —
PROPOSED SPOT SHOT	+143.20

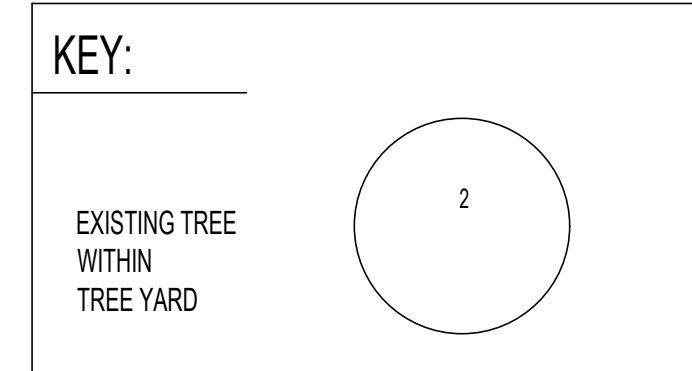


DRAINAGE DETAIL
SCALE: 1"=20'

	PREPARED BY: Engineering Alliance, Inc. Civil Engineering & Land Planning Consultants 1950 Lafayette Road Portsmouth, NH 03801 Tel: (603) 610-7100 Fax: (603) 610-7101
	PROJECT: Proposed Site Plan 922 Lynnfield Street (Tax Map 53 Lot 2586) Lynnfield, Massachusetts
PROJECT #: 22-82701	DATE: December 22, 2022
SCALE: AS NOTED	DWG FILE NAME: 22-82701
DESIGN BY: Calvin Reach	CHECKED BY: Richard A. Savo, P.E.
APPLICANT: Noto Partners, LLC 49 Water Street Wakefield, MA 01880	DRAWING TITLE: Grading, Drainage & Utilities Plan
DWG. NO. C-3	DESCRIPTION OF REVISION DATE



NOTE: EASEMENTS SHOWN ARE SCANNED FROM EASEMENT REALIGNMENT SKETCH PLAN RECORDED IN BOOK 25215 PAGE 562 AND ARE APPROXIMATE AS NO GEOMETRY WAS GIVEN.



PLAN
1 TREE INVENTORY PLAN
 SCALE: 1" = 20'

922 Lynnfield Street, Lynnfield, MA
 2022 TREE PROTECTION ZONE SURVEY

	LATITUDE	LONGITUDE	SPECIES	DBH	TREE DEFECT	Tree Protection Zone (YES/NO)	TREE STRESS LEVEL	RECOMMENDED MITIGATION	POTENTIAL TARGETS	Number 2 inch DBH Replacement Trees	NOTES
1	42.511367	-70.991829	Red Oak	40	Multiple	Yes	Medium	Removal	Multiple	20	Conk on root buttress, dead branches Branch cavities, girdling roots.
2	42.511079	-70.992096	Red Oak	35.5	Multiple	Yes	Low	Retain	Multiple		Girdling roots and Fork cavity
3	42.511218	-70.992114	Norway Maple	13.5	Multiple	Yes	High	Removal	Multiple		Invasive Species
4	42.511228	-70.992297	Norway Maple	7	Dead branches	Yes	Medium	Removal	Multiple		Invasive Species
5	42.511299	-70.992363	Norway Maple	22	Dead branches	Yes	Medium	Removal	Multiple		Invasive Species. Sounding indicates heart rot
6	42.511296	-70.992365	Norway Maple	6	Dead branches	Yes	Medium	Removal	Multiple		Invasive species
7	42.511286	-70.992362	Norway Maple	9	Dead branches	Yes	Medium	Removal	Multiple		Invasive species
8	42.511322	-70.992475	Norway Maple	9	Dead branches	Yes	Medium	Removal	Multiple		Invasive species
9	42.511285	-70.992405	Norway Maple	8	Dead branches	Yes	Medium	Removal	Multiple		Invasive species
10	66642.5114	-70.992444	Red Oak	36	Multiple	Yes	Medium	Removal	Multiple	18	Dead branches and Sounding indicates heart rot.
11	42.511366	-70.992407	Norway Maple	12	Dead branches	Yes	Medium	Removal	Multiple		Invasive species
12	42.511351	-70.992428	Norway Maple	14	Multiple	Yes	Medium	Removal	Multiple		Invasive Species. Sounding indicates heart rot
13	42.511408	-70.992503	Norway Maple	13.5	Multiple	Yes	Medium	Removal	Multiple		Invasive Species. Sounding indicates heart rot
14	42.511425	-70.992476	Norway Maple	10.5	Multiple	Yes	High	Removal	Multiple		Invasive Species. Sounding indicates heart rot
15	42.511443	-70.992393	Norway Maple	7.5	Multiple	Yes	High	Removal	Multiple		Invasive Species. Sounding indicates heart rot
16	42.511418	-70.992409	Norway Maple	12.5	Multiple	Yes	High	Removal	Multiple		Invasive Species. Sounding indicates heart rot
17	42.511496	-70.992185	Red Oak	28	Multiple	Yes	Medium	Removal	Multiple	14	Dead branches and Sounding indicates heart rot.
18	42.511487	-70.992368	Norway Maple	15.5	Multiple	Yes	High	Removal	Multiple		Invasive Species. Sounding indicates heart rot and girdling roots

TREE DEFECT	Dead branches, Cavities, Internal rot or Multiple
TREE STRESS LEVEL	High, Medium, Low or Dead
RECOMMENDED MITIGATION	Removal or Retain
POTENTIAL TARGETS	Public Way, Utility Line, Residential Structure, or Multiple

NOTE: TREE PROTECTION ZONE SURVEY PREPARED BY:
 James M MacArthur
 ISA Certified Arborist # NE-7574 A
 Professional Environmental Services, LLC
 71 Holly Ave.
 Lynn, MA 01904

APPLICANT
Noto Partners, LLC
 49 Water Street
 Wakefield, MA 01880

REVISIONS

NO.	DATE	DESCRIPTION

Tree Protection Zone Inventory Plan
 922 Lynnfield St.
 Lynnfield, MA

DRAWING TITLE
Landscape Plan

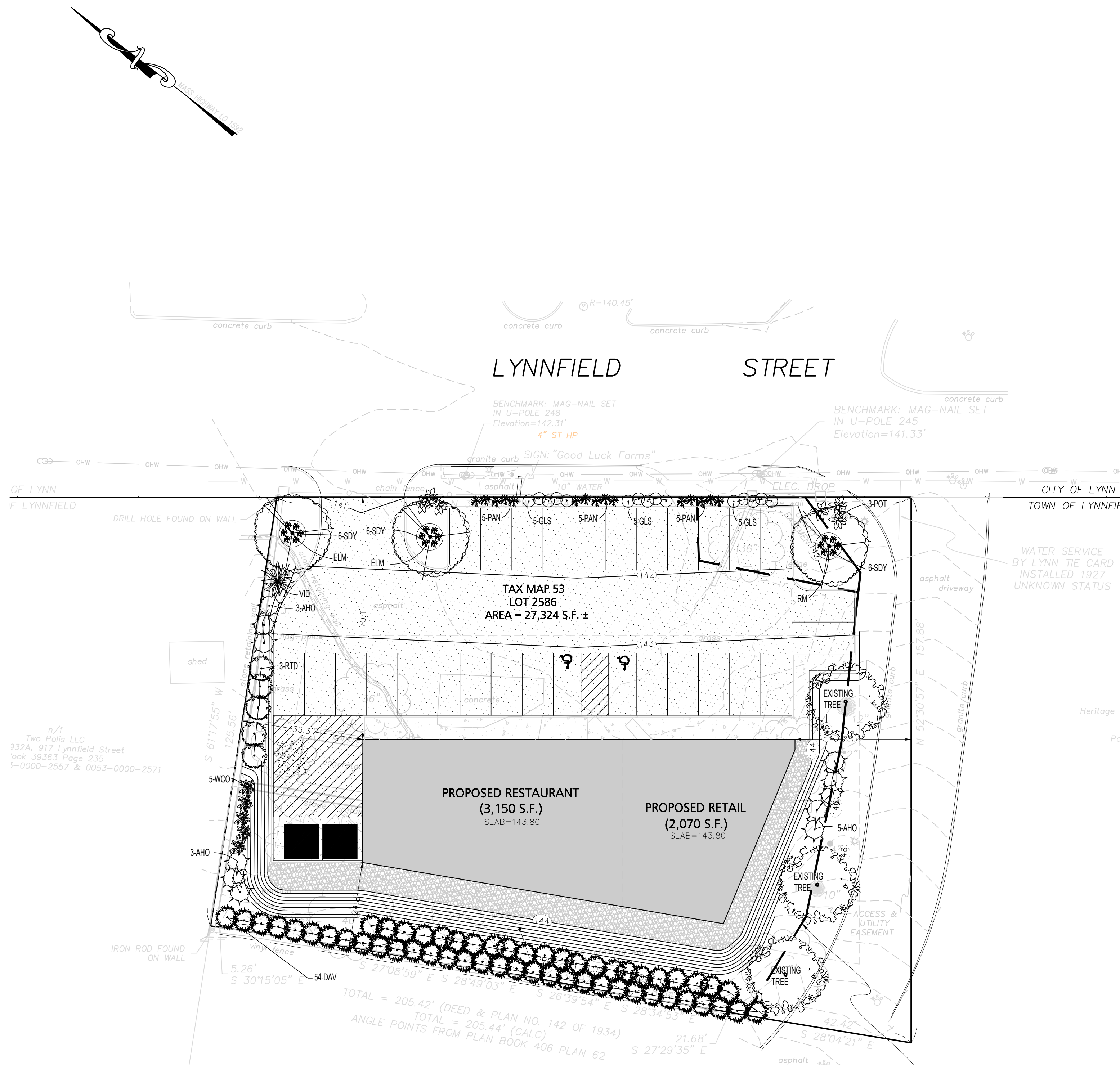


james k. emmanuel | associates
 LANDSCAPE ARCHITECTS
 22 Carlton Rd.
 Marblehead, MA 01945
 tel. (781) 622-7487
 james@jamesemmanuel.com
 www.jamesemmanuel.com

SCALE: 1" = 20'
 DRAWN BY: JKE
 CHECKED:
 DATE: December 22, 2022

DRAWING NUMBER

L-1

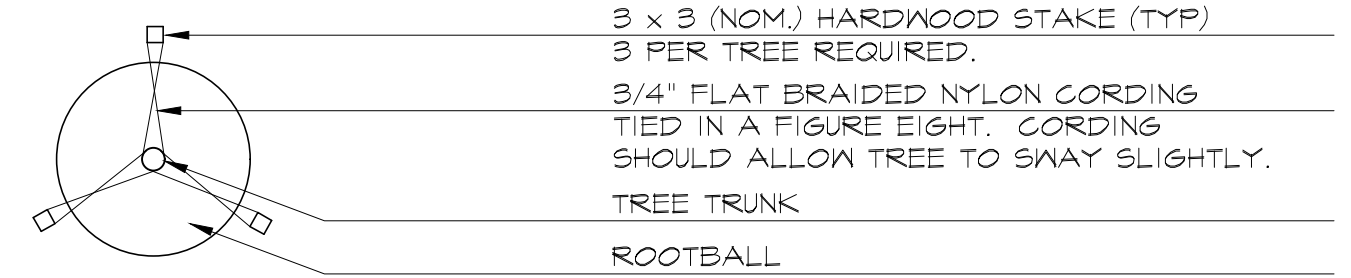


1 LANDSCAPE PLAN
SCALE: 1" = 20'

NOTE: EASEMENTS SHOWN ARE SCANNED FROM EASEMENT REALIGNMENT SKETCH PLAN RECORDED IN BOOK 25215 PAGE 562 AND ARE APPROXIMATE AS NO GEOMETRY WAS GIVEN.

Plant Schedule

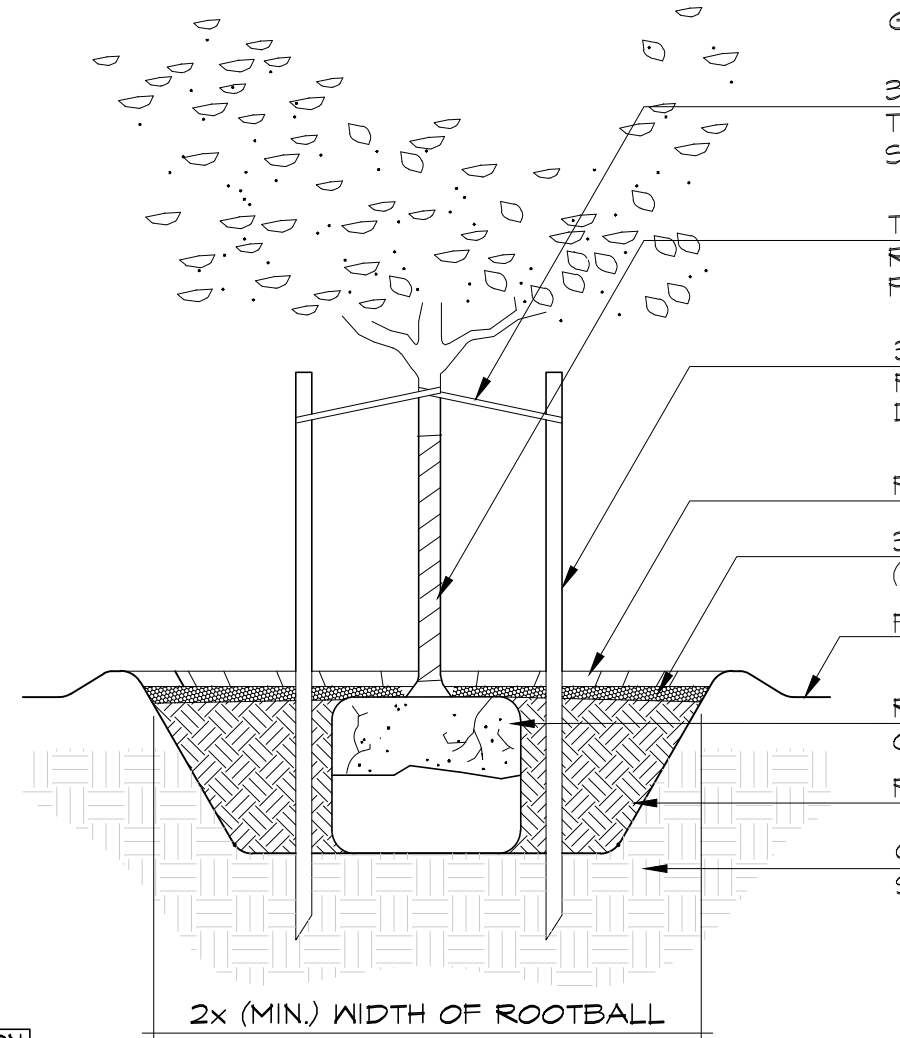
Qty	Key	Botanical Name	Common Name	Size
TREES:				
2	ELM	Ulmus americana 'Princeton'	Princeton Elm	2-2.5'cal
1	RM	Acer rubrum 'Red Sunset'	Red Sunset Maple	2-2.5'cal
EVERGREENS:				
54	DAV	Thuja occidentalis 'Nigra'	Dark American Arborvitae	7-8'
SHRUBS:				
11	AHO	Ilex opaca	American Holly	4-5'
15	GLS	Rhus aromatica Gro-Low	Grow Low Sumac	#3pot
3	POT	Potentilla 'Abbotswood'	Abbotswood Potentilla	#3pot
5	RTD	Cornus alba 'Elegantissima'	Varigated Red Twig Dogwood	#3pot
1	VID	Viburnum dentatum	Arrowwood	3-4'
5	WCO	Cotoneaster salicifolius 'Repandens'	Willowleaf Cotoneaster	#3pot
GRASSES/PERENNIALS:				
15	PAN	Panicum virgatum	Switchgrass	#1pot
18	SDY	Hemerocallis 'Stella D'oro'	Stella D'oro Daylily	#1pot



PLAN

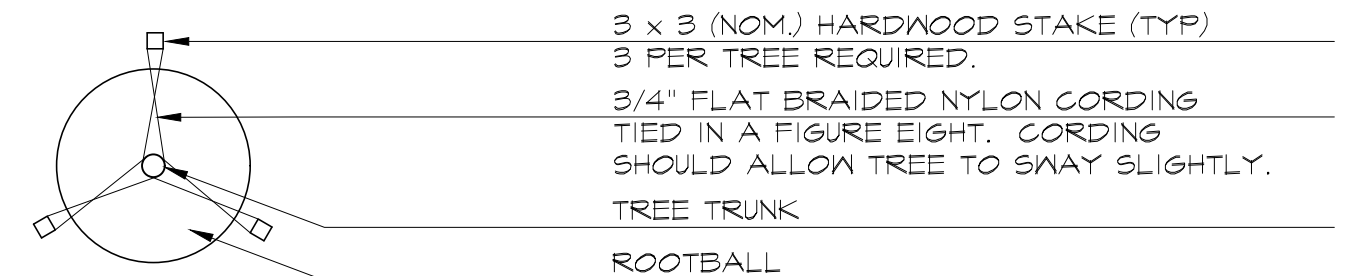
3 x 3 (NOM.) HARDWOOD STAKE (TYP)
3 PER TREE REQUIRED.
3/4" FLAT BRAIDED NYLON CORDING
TIED IN A FIGURE EIGHT. CORDING
SHOULD ALLOW TREE TO SWAY SLIGHTLY.
TREE TRUNK
ROOTBALL

NOTES:
1. DO NOT CUT LEADER.
2. REMOVE ALL TWINE, ROPES & TAGS
FROM TREE BRANCHES & TRUNK.
3. PLANT TREE SO THAT TRUNK/ ROOT
FLARE JUNCTION IS 1-2" ABOVE FINISHED
GRADE.



SECTION

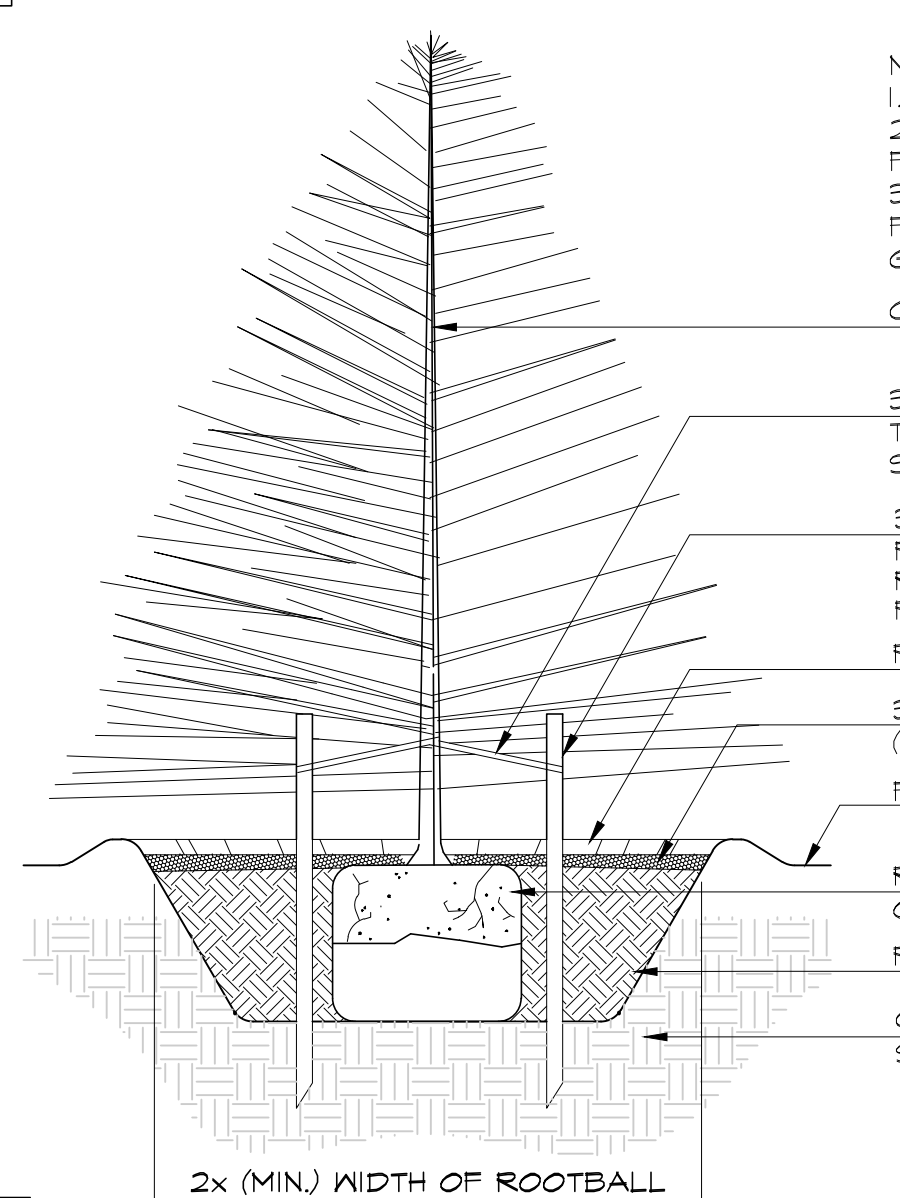
2 DECIDUOUS TREE PLANTING AND STAKING
SCALE: N.T.S.



PLAN

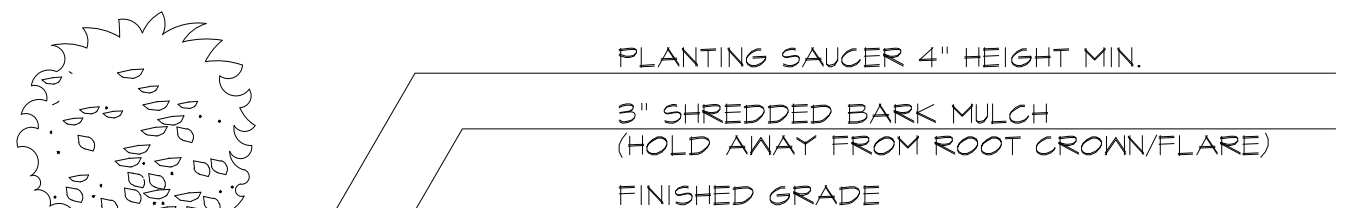
3 x 3 (NOM.) HARDWOOD STAKE (TYP)
3 PER TREE REQUIRED.
3/4" FLAT BRAIDED NYLON CORDING
TIED IN A FIGURE EIGHT. CORDING
SHOULD ALLOW TREE TO SWAY SLIGHTLY.
TREE TRUNK
ROOTBALL

NOTES:
1. DO NOT CUT LEADER.
2. REMOVE ALL TWINE, ROPES & TAGS
FROM TREE BRANCHES & TRUNK.
3. PLANT TREE SO THAT TRUNK/ ROOT
FLARE JUNCTION IS 1-2" ABOVE FINISHED
GRADE.
CONIFER- REFER TO PLANT LIST



SECTION

3 CONIFEROUS TREE PLANTING AND STAKING
SCALE: N.T.S.



SECTION

4 SHRUB PLANTING
SCALE: N.T.S.

APPLICANT
Noto Partners, LLC
49 Water Street
Wakefield, MA 01880

REVISIONS

NO.	DATE	DESCRIPTION

Landscape Plan
922 Lynnfield St.
Lynnfield, MA

Landscape Plan

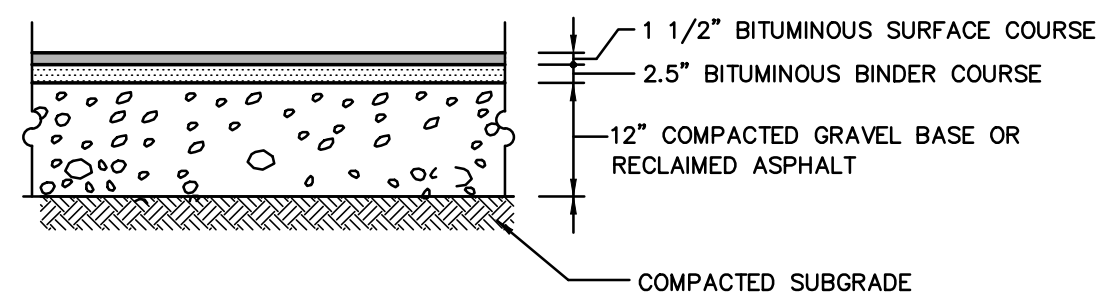


james k. emmanuel | associates
LANDSCAPE ARCHITECTS
22 Carlton Rd.
Marblehead, MA 01945
tel. (781) 622-7487
james@jamesemmanuel.com
www.jamesemmanuel.com

SCALE: 1" = 20'
DRAWN BY: JKE
CHECKED:
DATE: December 22, 2022

DRAWING NUMBER

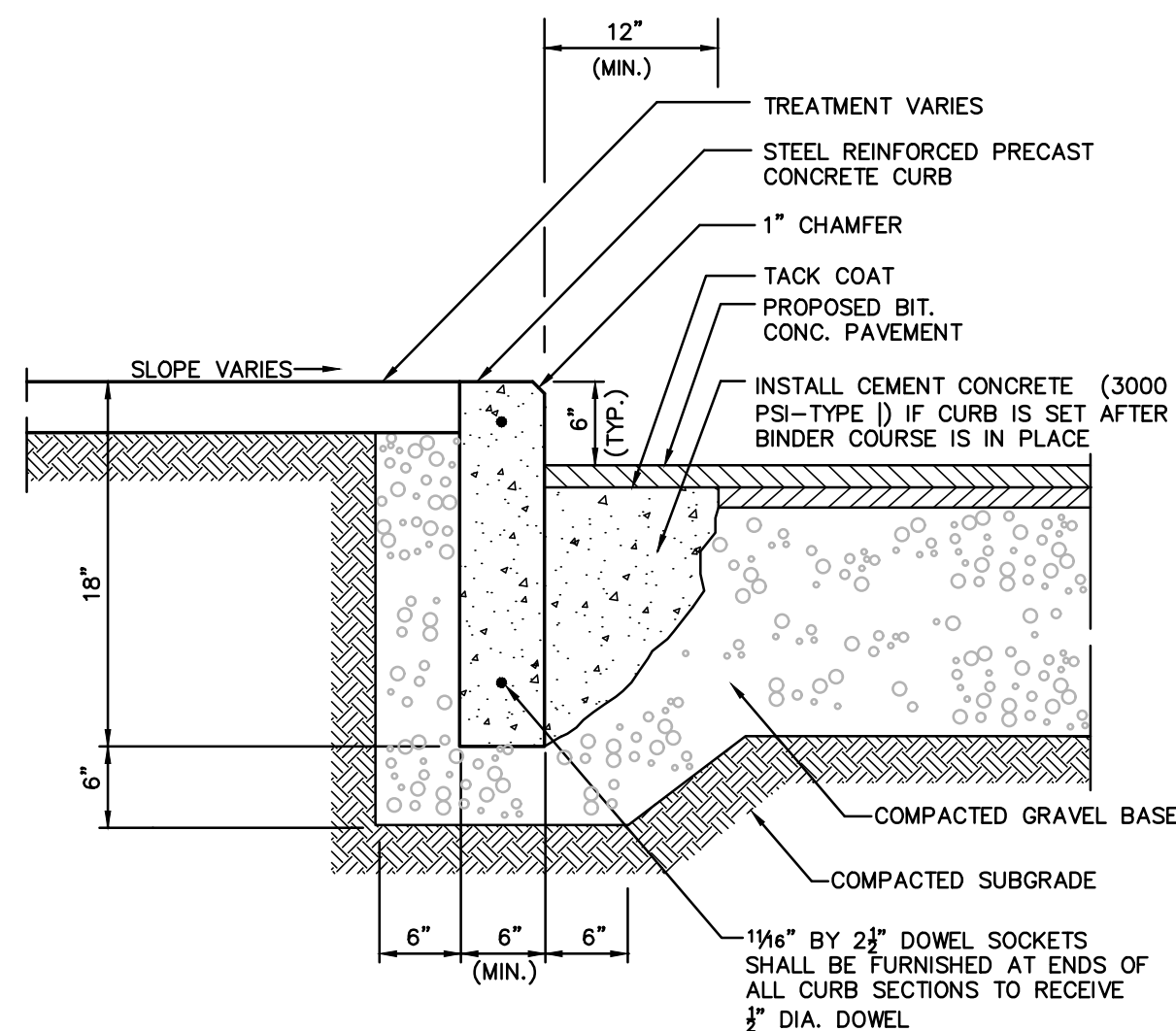
L-2



- NOTES:**
- NEW STANDARD PAVEMENT SHALL CONSIST OF A 4" TOTAL THICKNESS IN ALL PAVED AREAS OF MASSHIGHWAY CLASS 1, TYPE 1 BITUMINOUS CONCRETE APPLIED IN TWO COURSES, ONE 1-1/2" SURFACE COURSE OVER ONE 2-1/2" BINDER COURSE OVER A 12" COMPACTED GRAVEL OR RECLAIMED ASPHALT BASE. COMPACT THE UPPER 12" OF RECLAIMED BASE COURSE, PAVEMENT BINDER AND SURFACE COURSES TO 95 PERCENT OF MAXIMUM DENSITY, AS DETERMINED FOR EACH MATERIAL BY THE APPLICABLE TEST METHODS. ALL BACKFILL SHALL BE PLACED IN 6" MINIMUM LIFTS.
 - OWNER'S ENGINEER RESERVES THE RIGHT TO REQUEST COMPACTION TESTS AND/OR CORE SAMPLES. IF TESTS ARE BEYOND THOSE REQUIRED BY THE SPECIFICATIONS AND PROVE CORRECT, PER ABOVE SPECIFICATION, TESTS WILL BE AT THE EXPENSE OF THE OWNER, OTHERWISE THE CONTRACTOR WILL BE RESPONSIBLE FOR TESTING COST.
 - PAVEMENT SECTIONS ARE SUBJECT TO CHANGE AND WILL BE BASED ON THE RESULTS OF FURTHER GEOTECHNICAL INVESTIGATIONS.

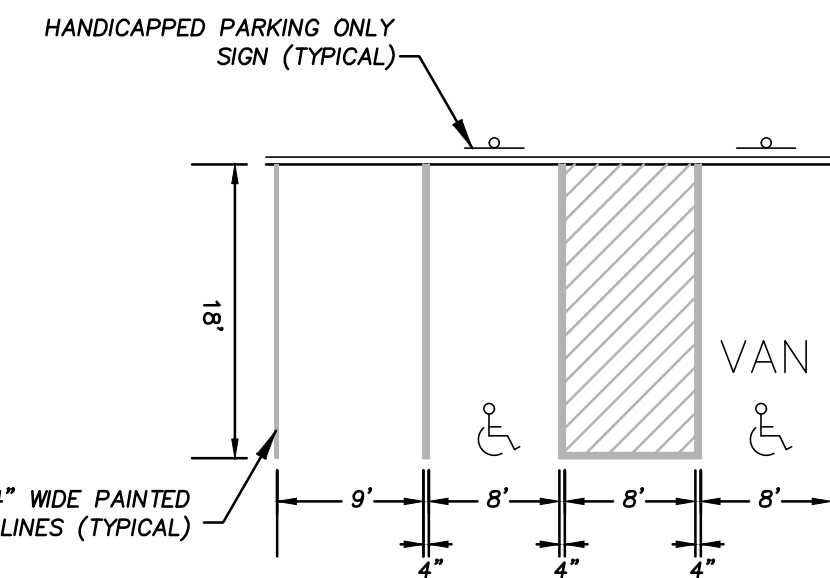
STANDARD PAVEMENT SECTION

NOT TO SCALE



PRECAST CONCRETE CURB (SITE)

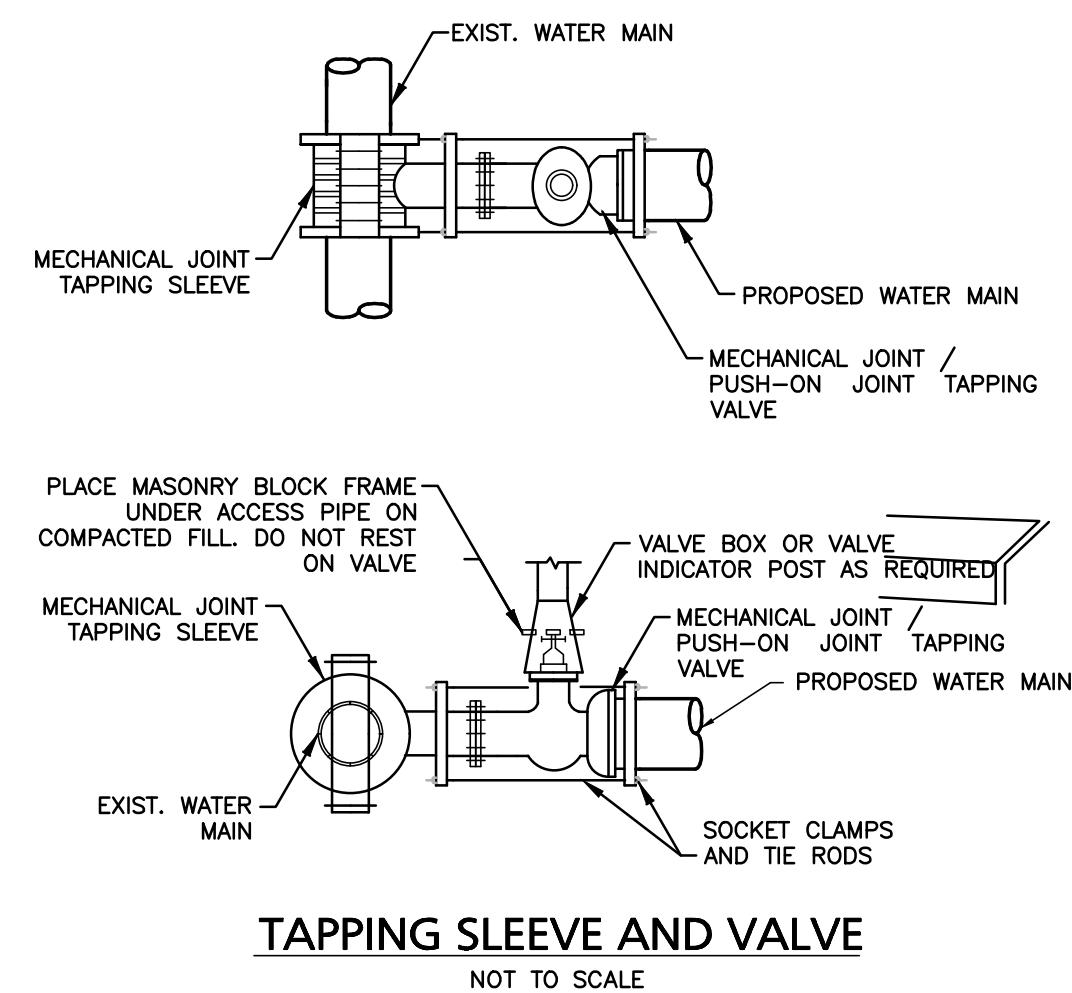
NOT TO SCALE



- NOTES:**
- "V" DENOTES HANDICAPPED ACCESSIBLE PARKING SPACE
 - REFER TO SIDEWALK DETAIL FOR SIDEWALK CONSTRUCTION.

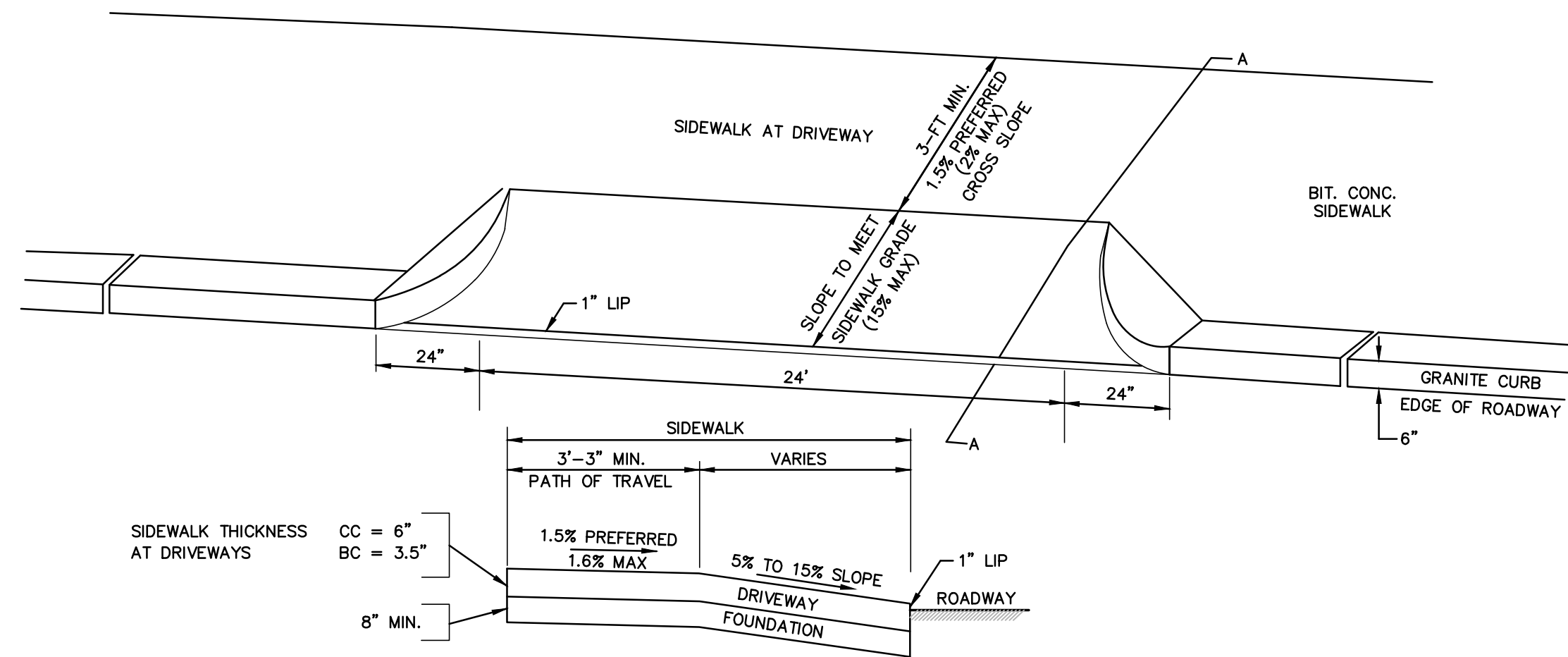
HANDICAP AND STANDARD PARKING DETAIL

NOT TO SCALE



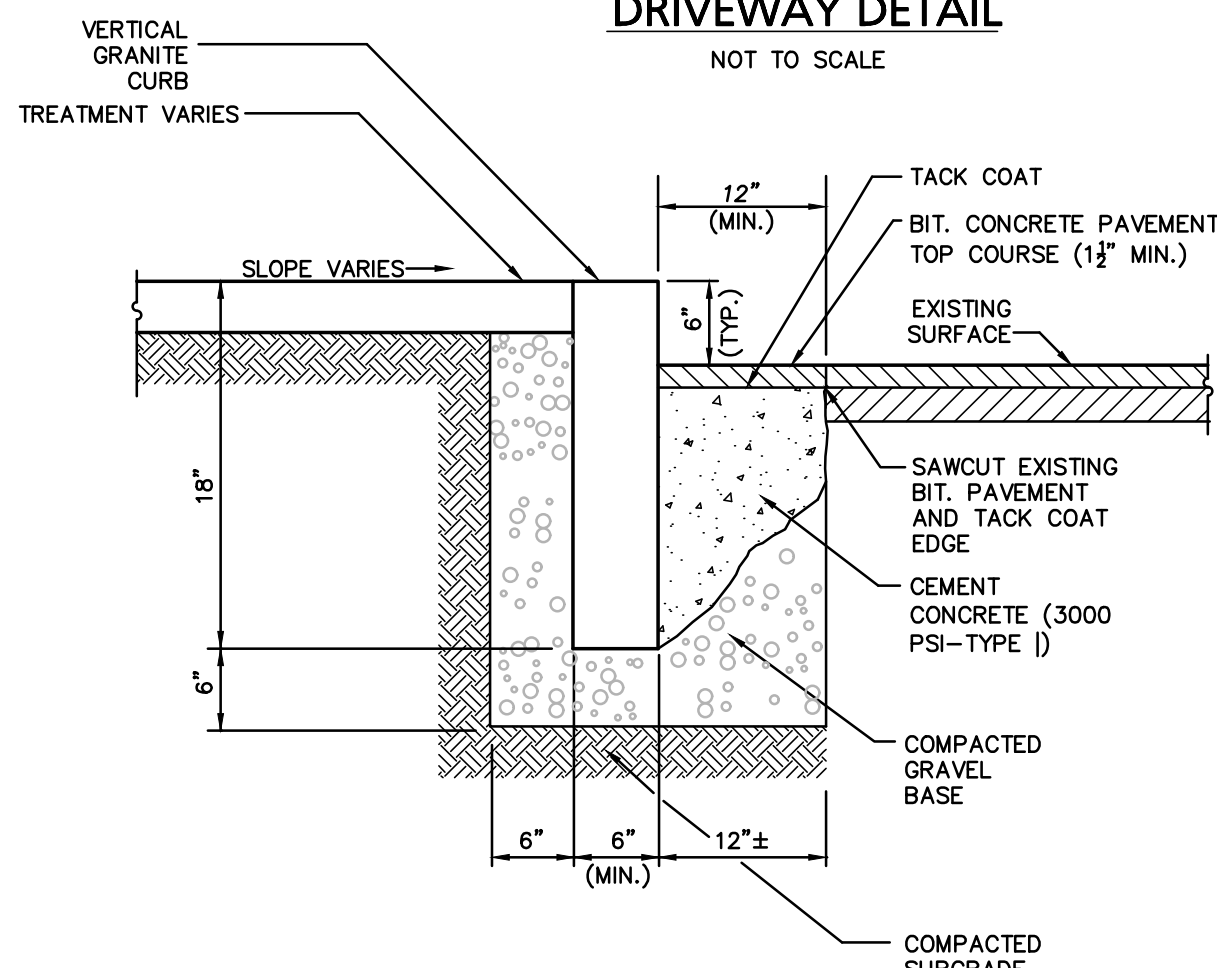
TAPPING SLEEVE AND VALVE

NOT TO SCALE



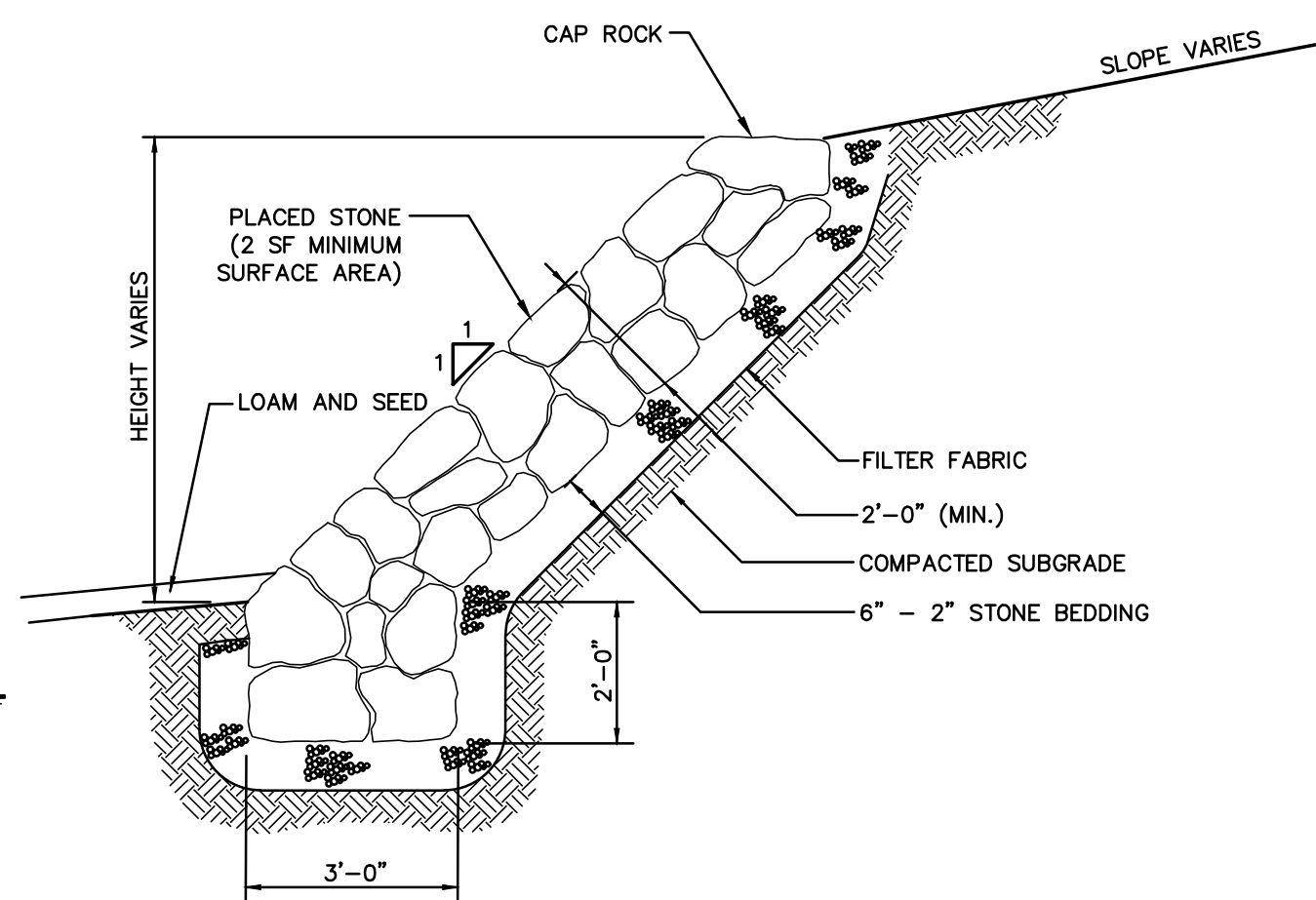
SECTION A-A DRIVEWAY DETAIL

NOT TO SCALE



VERTICAL GRANITE CURB SET IN EXISTING PAVEMENT (R-O-W)

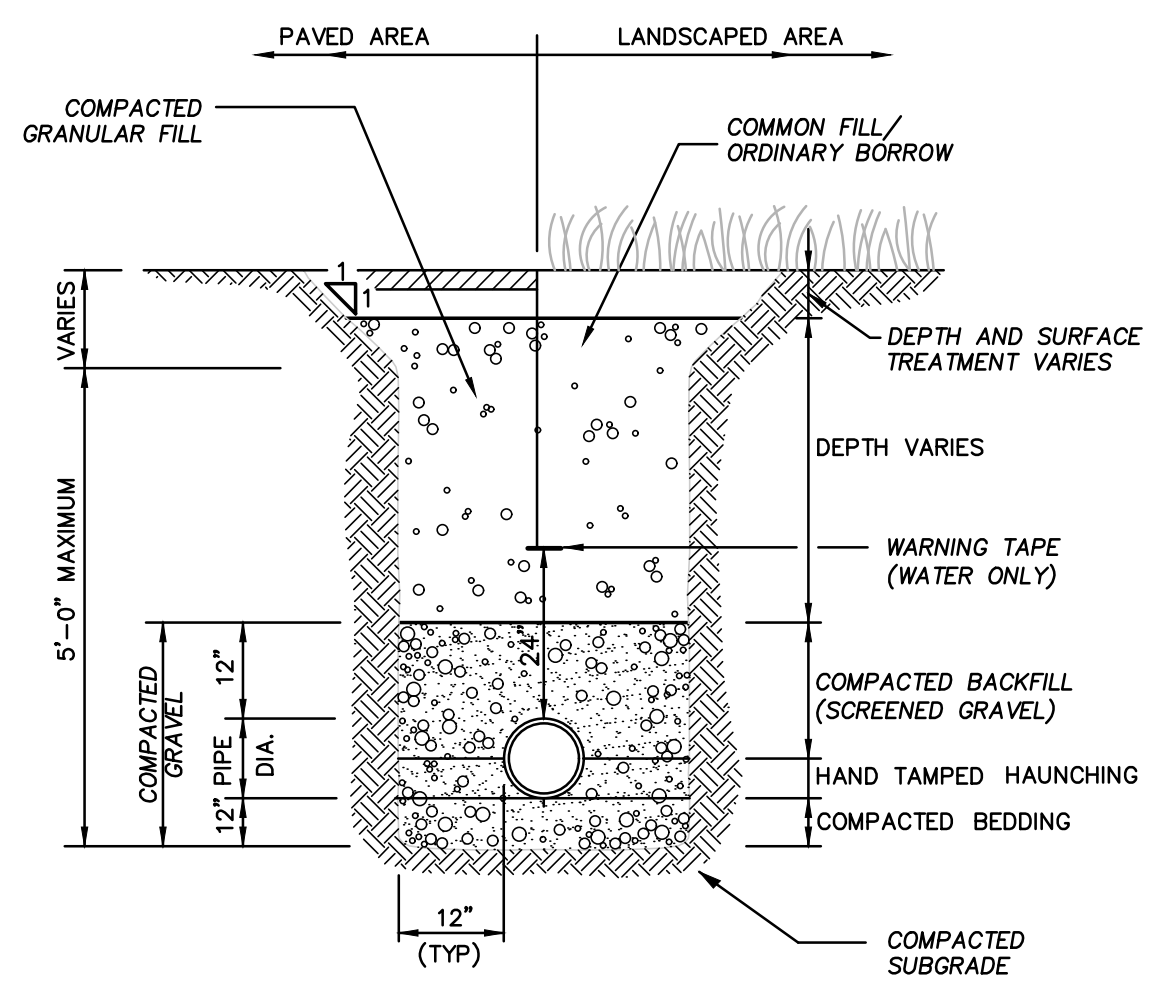
NOT TO SCALE



PLACED STONE SLOPE

NOT TO SCALE

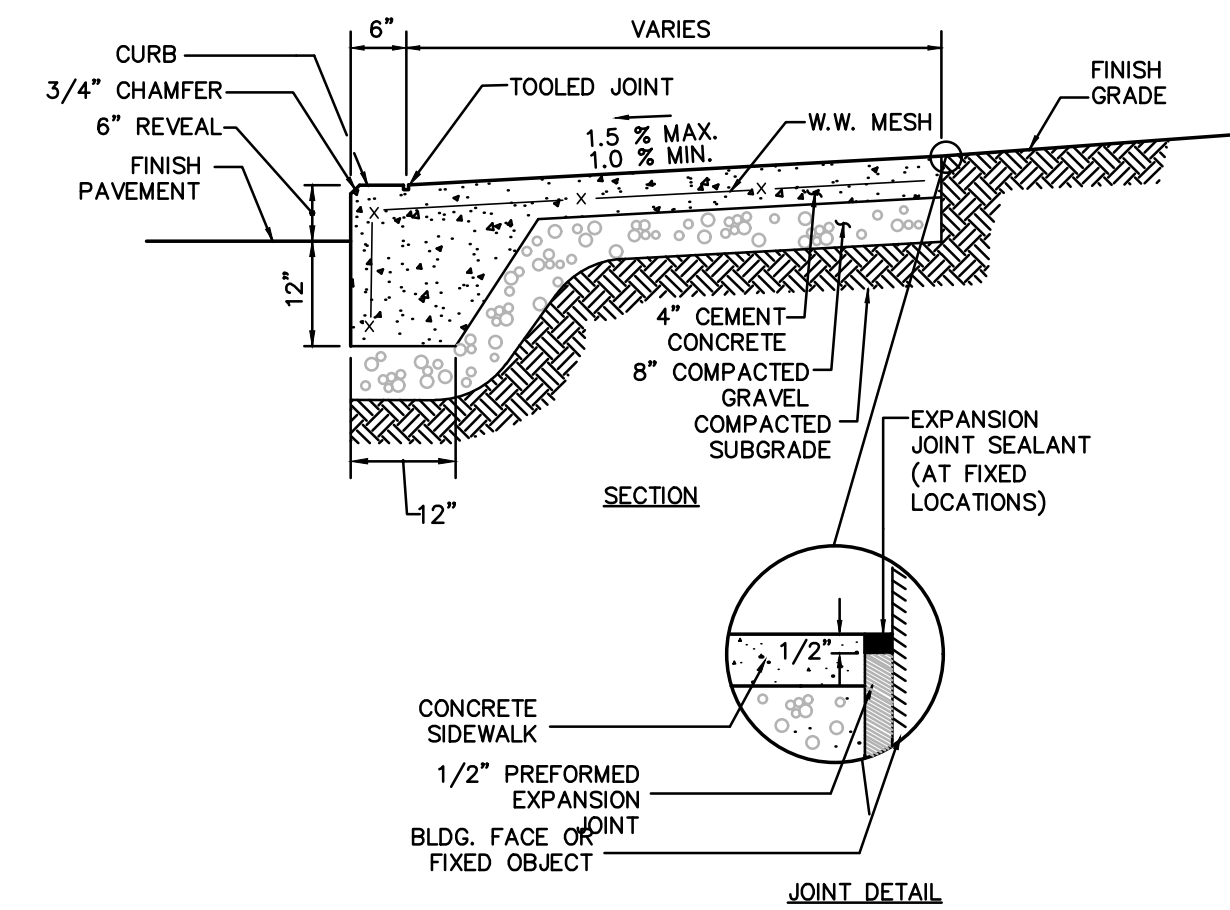
- NOTE:**
SLOPE TO BE FOUND ON UNDISTURBED MATERIAL AND CONSISTENT WITH GEOTECHNICAL ENGINEERS RECOMMENDATIONS.



UTILITY TRENCH

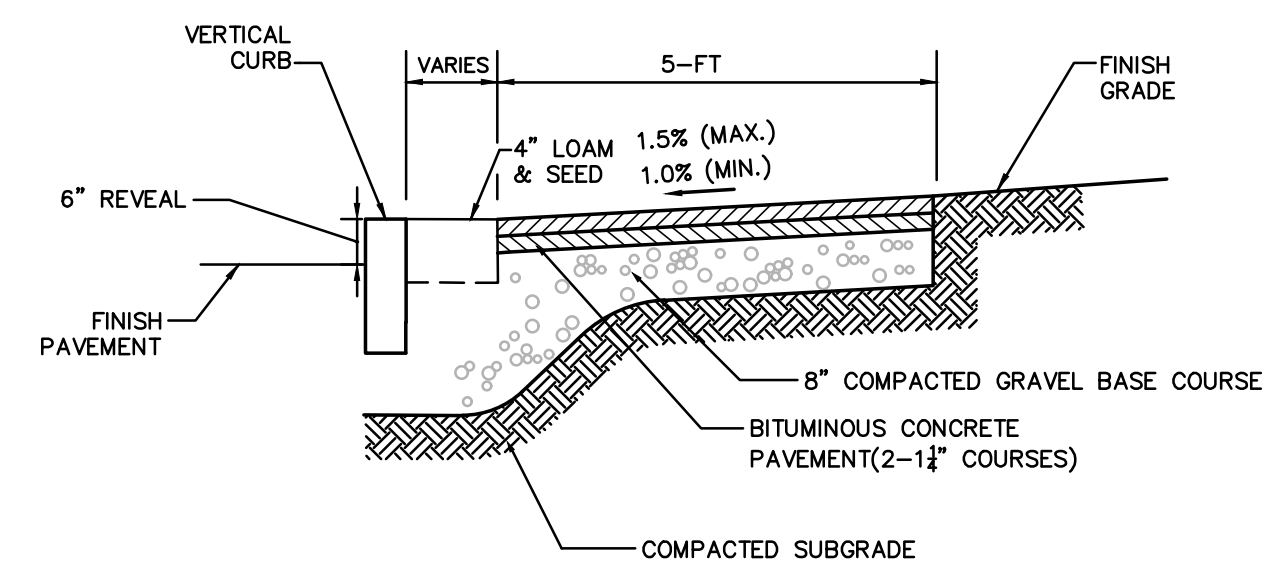
NOT TO SCALE

- NOTE:**
ALL BACKFILL SHALL BE PERFORMED IN 6-INCH MINIMUM LIFTS.



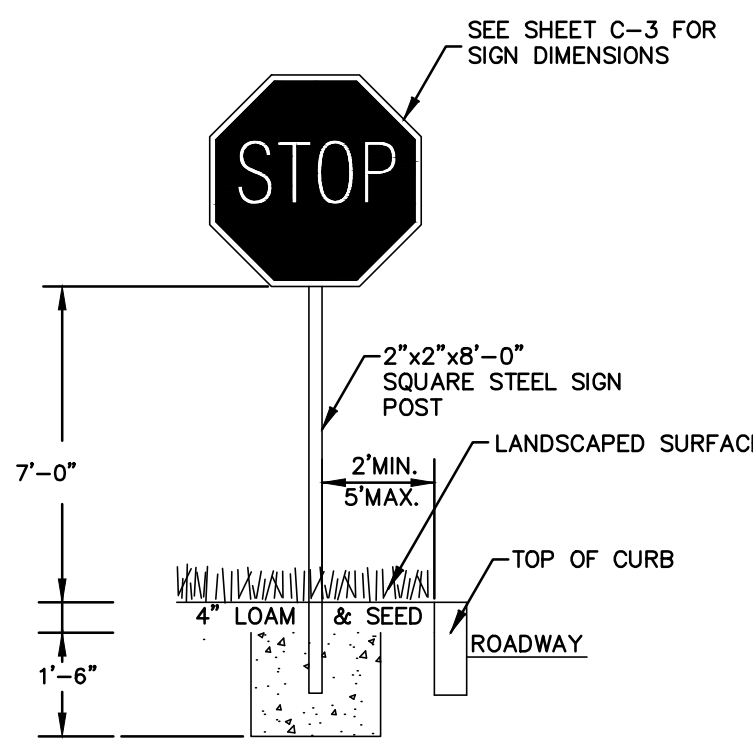
MONOLITHIC CONCRETE CURB & SIDEWALK (SITE)

NOT TO SCALE



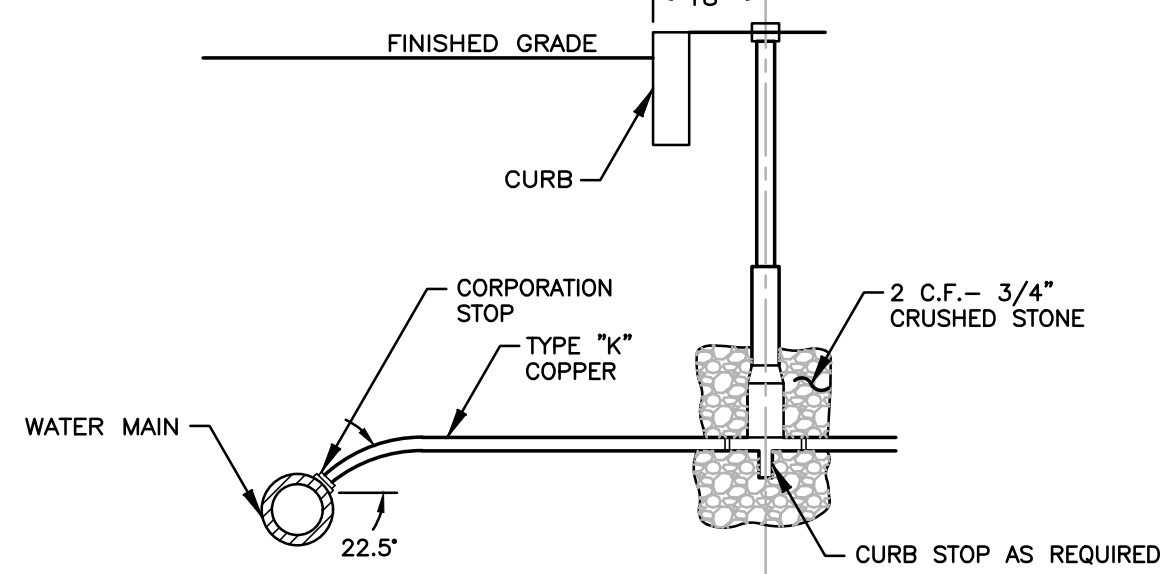
BITUMINOUS CONCRETE SIDEWALK (IN R-O-W)

NOT TO SCALE



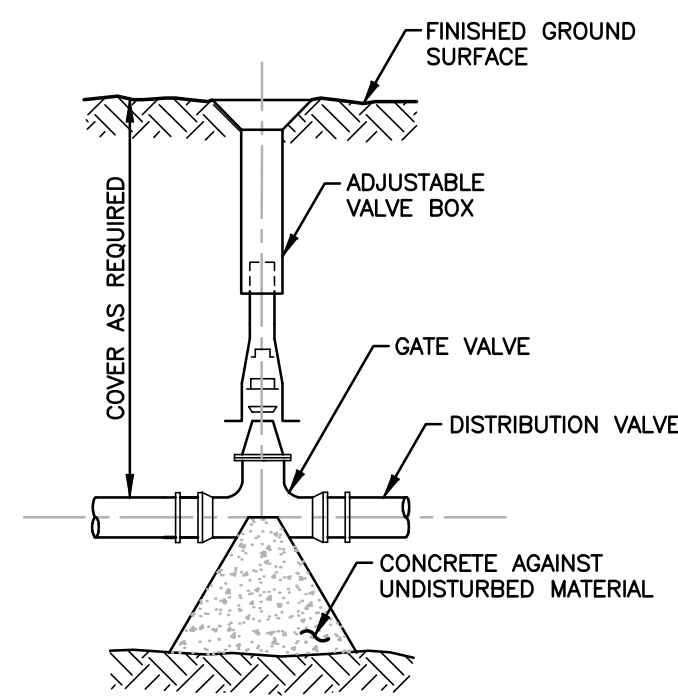
TYPICAL SIGN DETAIL

NOT TO SCALE



TYPICAL WATER SERVICE CONNECTION

NOT TO SCALE



WATER GATE DETAIL

NOT TO SCALE

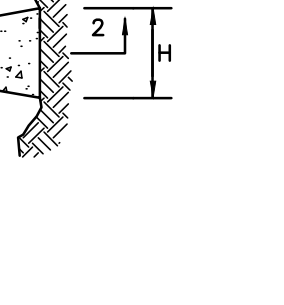
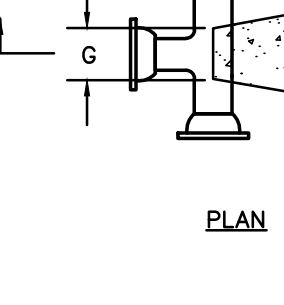
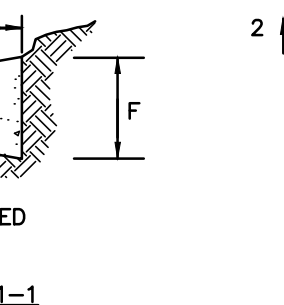
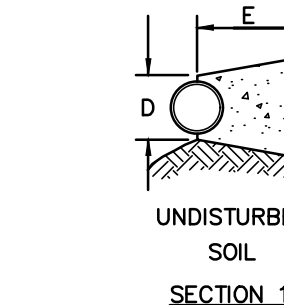
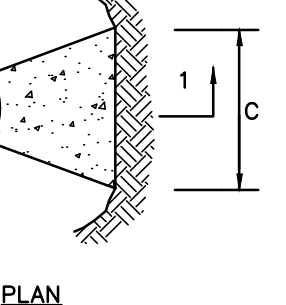
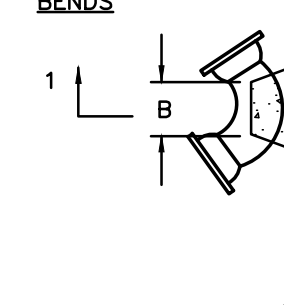
TABLE OF DIMENSIONS

BENDS	B	C	D	E	F	B	C	D	E	F			
6"	11 1/4"	8"	15"	12"	24"	12"	6"	45"	8"	30"	12"	24"	14"
6"	22 1/2"	8"	19"	12"	13"	6"	90"	8"	30"	12"	24"	18"	27"
8"	11 1/4"	8"	12"	12"	8"	45"	30"	12"	24"	14"	24"	18"	24"
8"	22 1/2"	8"	22"	17"	8"	90"	38"	12"	24"	14"	24"	24"	36"
12"	11 1/4"	8"	30"	15"	12"	45"	40"	12"	24"	14"	24"	18"	36"
12"	22 1/2"	8"	35"	25"	12"	90"	60"	12"	24"	14"	24"	18"	52"

TABLE OF DIMENSIONS

TEES	G	H	I	J	TEES	G	H	I	J
6" x 6" x 6"	12"	24"	24"	18"	12" x 12" x 6"	12"	24"	24"	18"
8" x 8" x 6"	12"	24"	24"	18"	12" x 12" x 8"	12"	24"	24"	18"
8" x 8" x 8"	12"	24"	24"	18"	12" x 12" x 12"	12"	36"	24"	36"

BENDS



- NOTES:**
- PROVIDE BLOCKS FOR TAPPING SLEEVES, DEAD ENDS, GATE VALVES, AND VERTICAL BENDS (SAME SIZE AS REQUIRED FOR TEES). PROVIDE ANCHOR RODS AT VERTICAL BENDS AND GATE VALVES.
 - CONCRETE SHALL NOT BE PLACED AGAINST PIPE BEYOND FITTING.
 - CONCRETE SHALL BE 3000 PSI-TYPE I.

CONCRETE THRUST BLOCK

NOT TO SCALE

NO.	DATE	DESCRIPTION OF REVISION

PREPARED BY:

Engineering Alliance, Inc.
Civil Engineering & Land Planning Consultants
1950 Lafayette Road
Portsmouth, NH 03801
Tel: (603) 610-7100
Fax: (603) 610-7101

PROJECT: **Proposed Site Plan**
922 Lynnfield Street
(Tax Map 53 Lot 2586)
Lynnfield, Massachusetts

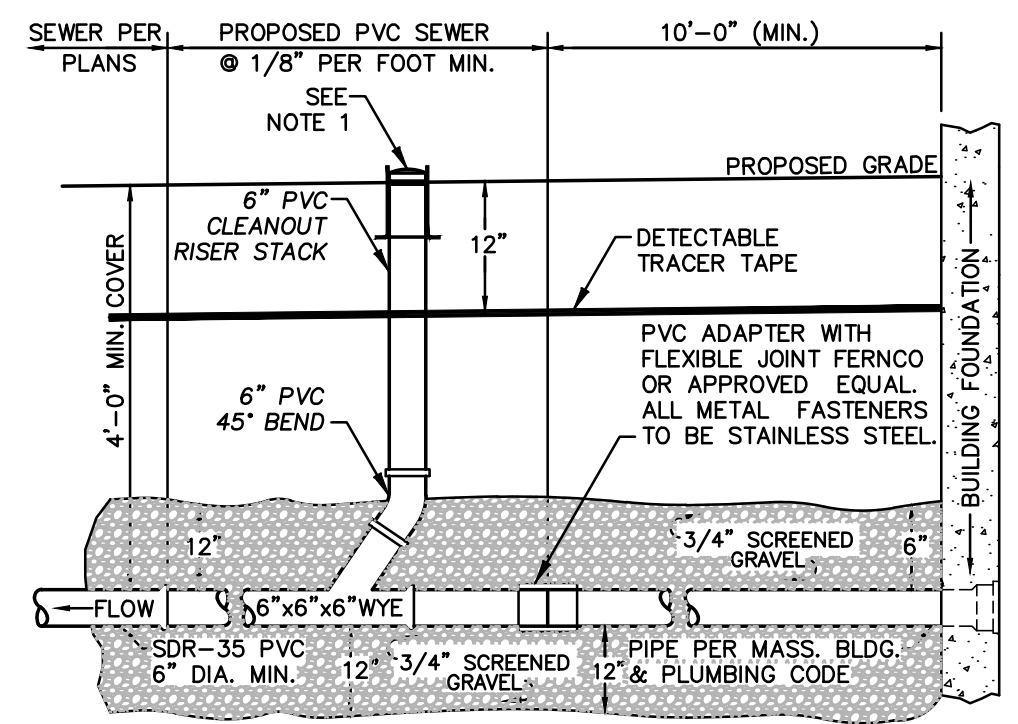
DATE: December 22, 2022
DWG FILE NAME: 22-82701
SCALE: AS NOTED
DESIGN BY: Calvin Reach
CHECKED BY: Richard A. Savo, P.E.

Professional Engineer for
Engineering Alliance, Inc.

APPLICANT: **Noto Partners, LLC**
49 Water Street
Wakefield, MA 01880

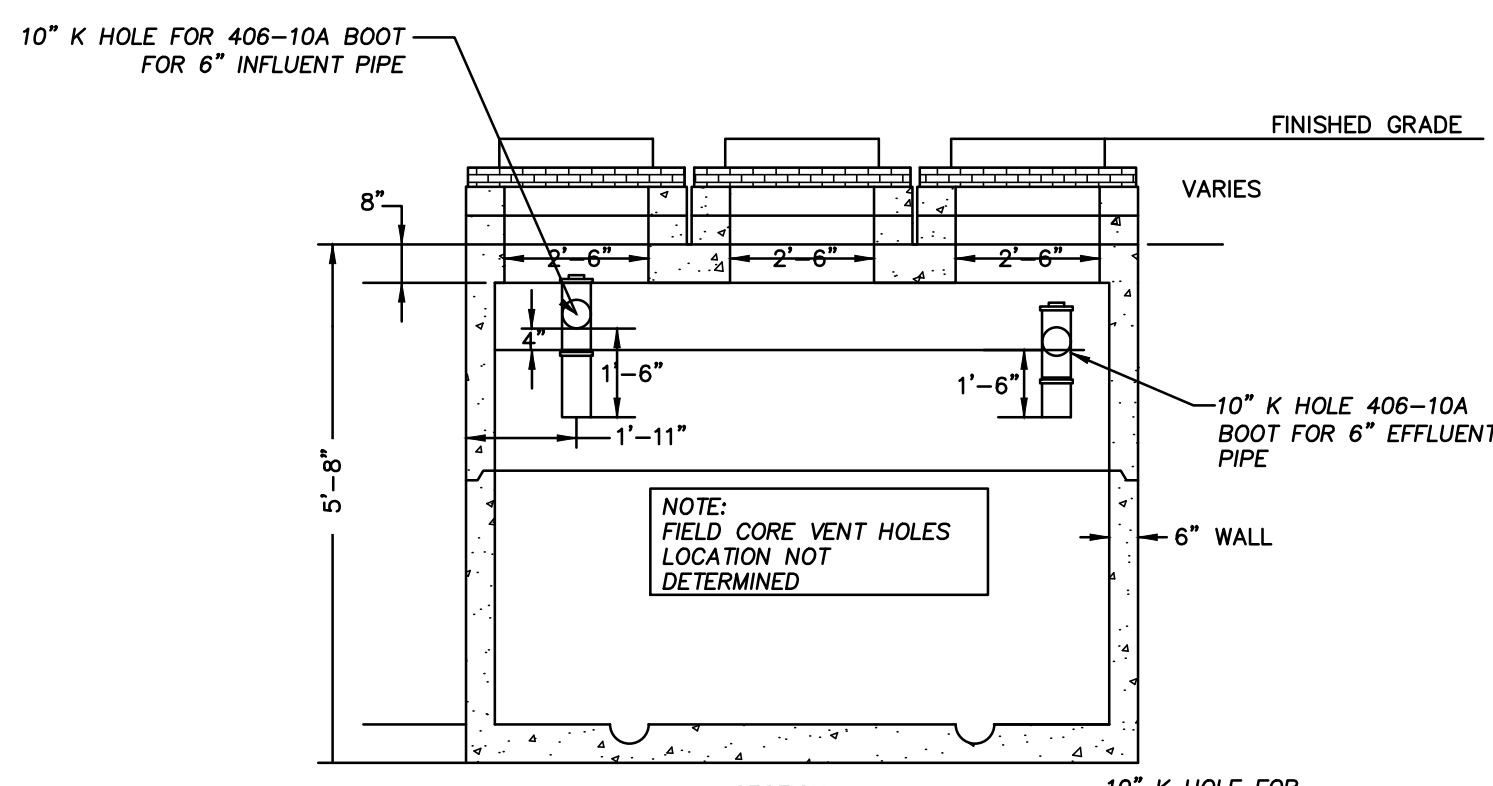
DRAWING TITLE:
Construction Details I

DWG. NO.: **D-1**



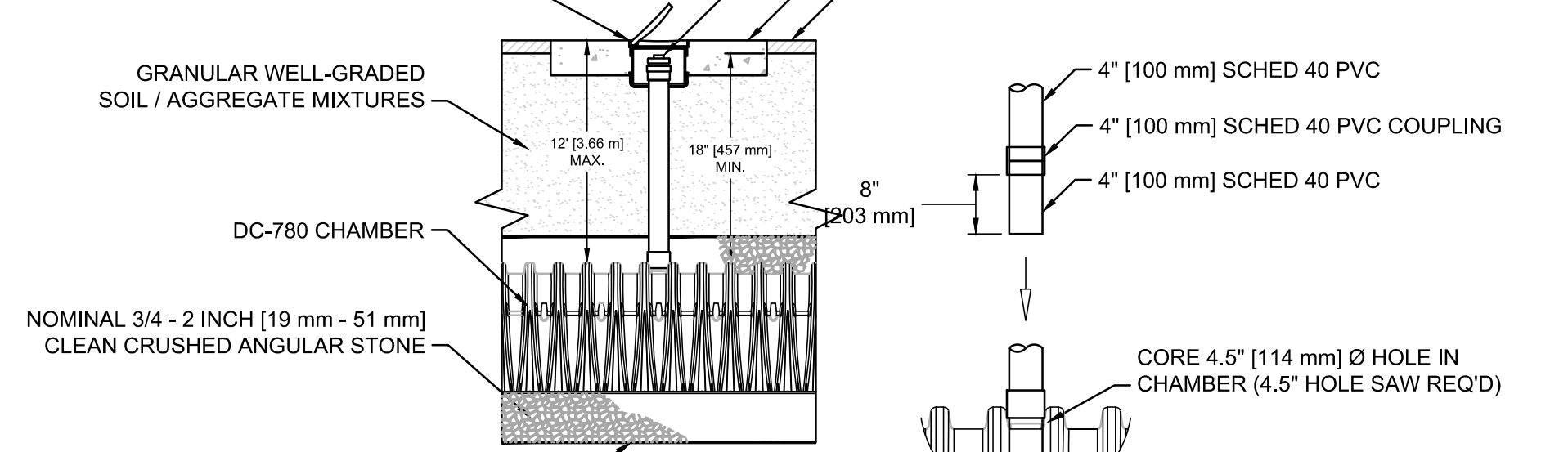
NOTES:
 1. LeBARON CAST IRON SEWER CLEANOUT RING COVER. COVER TO BE CAST WITH THE WORD "CLEANOUT" AND HAVE FLAT DIAMOND SURFACE.

SANITARY SEWER SERVICE AT BUILDING
 NOT TO SCALE



TYPICAL CATCH BASIN SHALLOW COVER WITH HOOD
 NOT TO SCALE

NYLOPLAST 12" [300 mm] INLINE DRAIN BODY W/ 12" [300 mm] SOLID HINGED COVER AND FRAME (SEE NYLOPLAST DWG# 7003-110-044 FOR PAVED APPLICATIONS / SEE DWG# 7003-110-045 FOR UNPAVED APPLICATIONS)



CONTECH CDS UNIT
 NOT TO SCALE

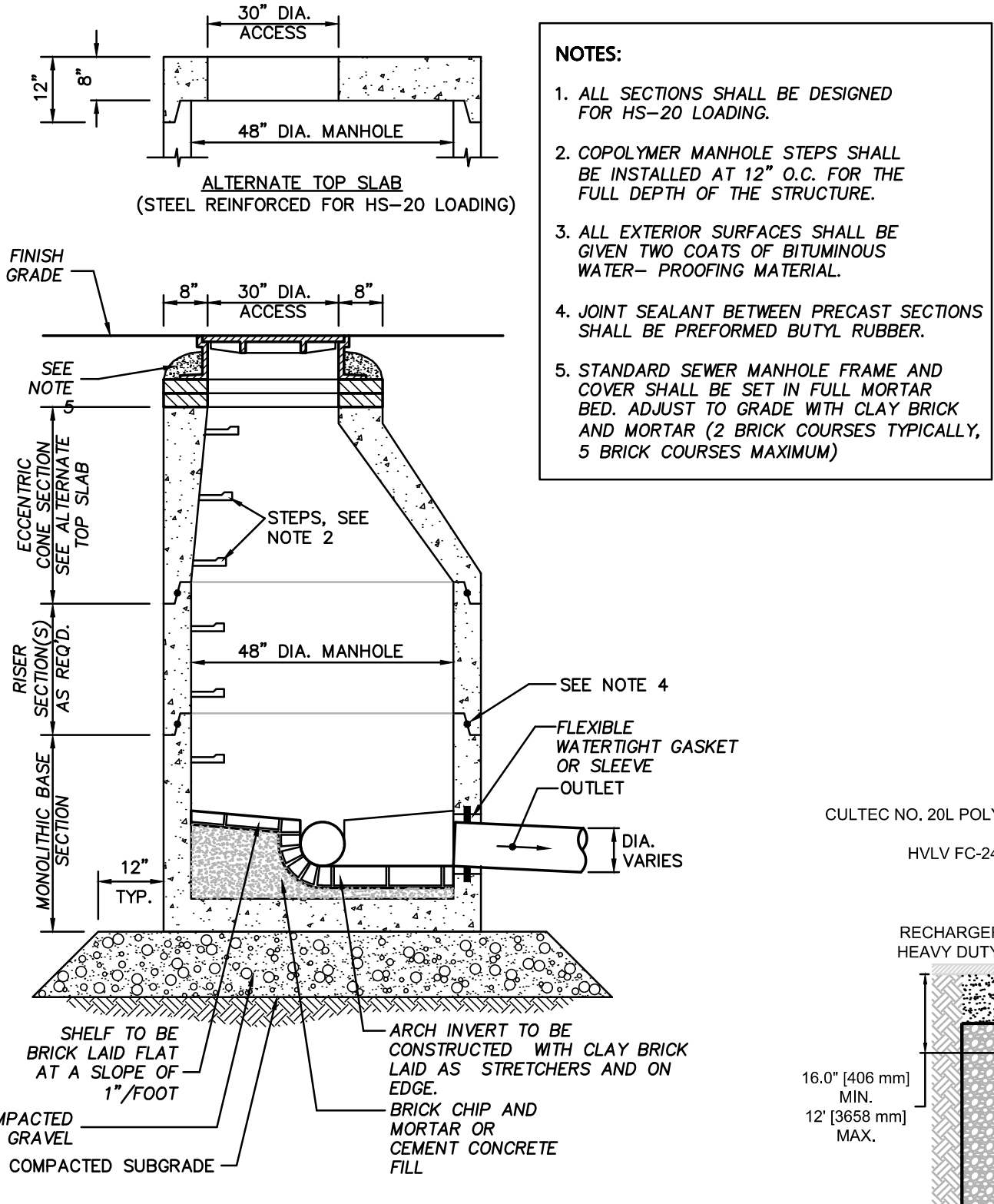
NOTE: CONTECH CDS INLINE OR APPROVED EQUAL

PLAN VIEW B-B
 N.T.S.

ELEVATION A-A
 N.T.S.

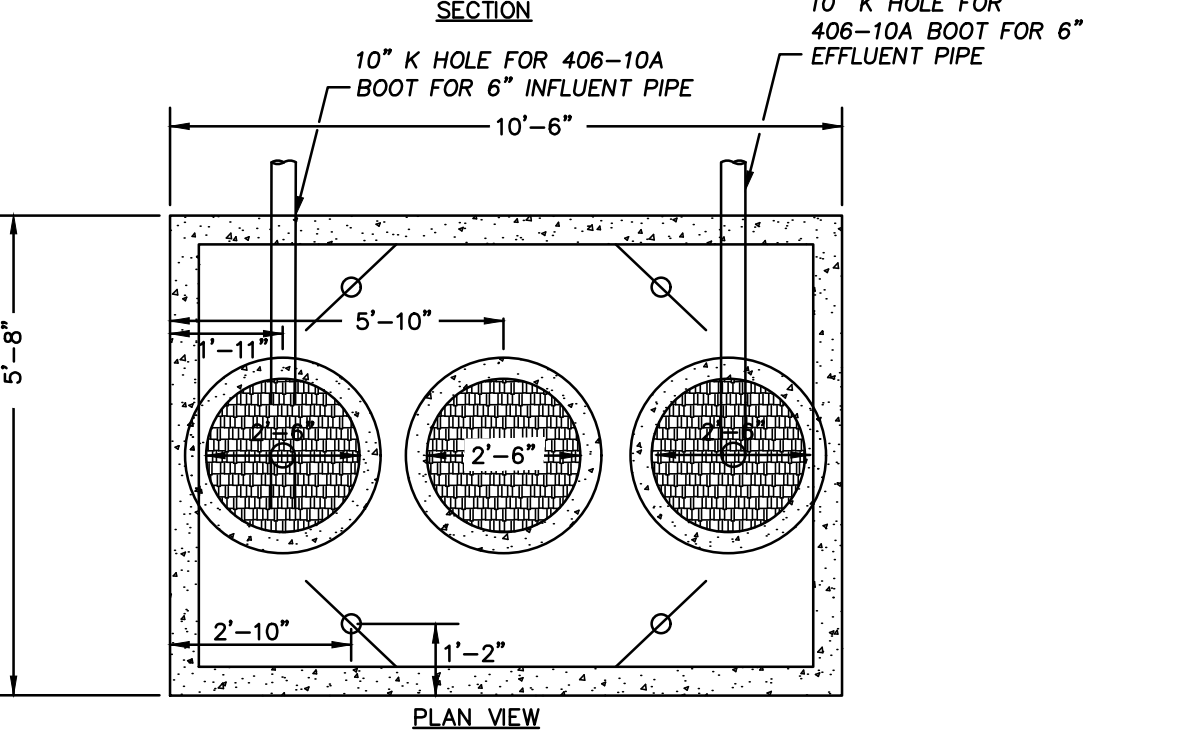
NOTE: CONTECH CDS INLINE OR APPROVED EQUAL

CONTECH CDS UNIT
 NOT TO SCALE



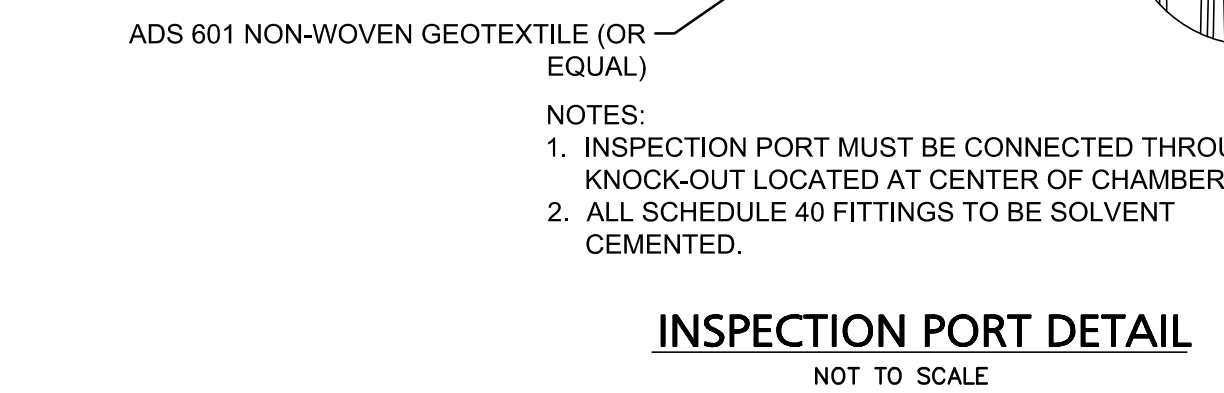
SANITARY SEWER MANHOLE
 NOT TO SCALE

NOTES:
 1. ALL SECTIONS SHALL BE DESIGNED FOR HS-20 LOADING.
 2. COPOLYMER MANHOLE STEPS SHALL BE INSTALLED AT 12" O.C. FOR THE FULL DEPTH OF THE STRUCTURE.
 3. ALL EXTERIOR SURFACES SHALL BE GIVEN TWO COATS OF BITUMINOUS WATER-PROOFING MATERIAL.
 4. JOINT SEALANT BETWEEN PRECAST SECTIONS SHALL BE PREFORMED BUTYL RUBBER.
 5. STANDARD SEWER MANHOLE FRAME AND COVER SHALL BE SET IN FULL MORTAR BED. ADJUST TO GRADE WITH CLAY BRICK AND MORTAR (2 BRICK COURSES TYPICALLY, 5 BRICK COURSES MAXIMUM)



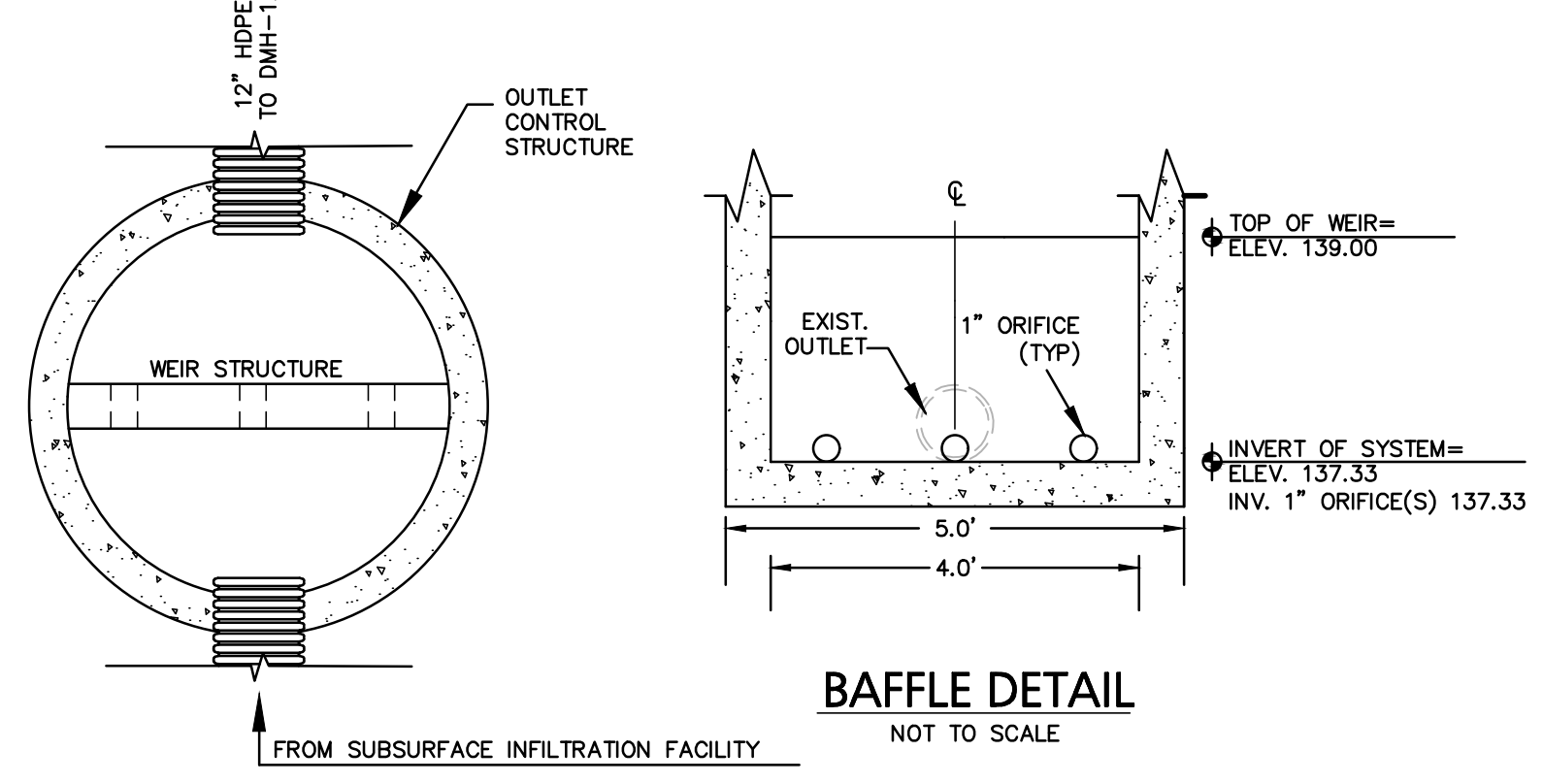
1,500 GAL PRECAST CONCRETE GREASE TRAP
 NOT TO SCALE

NOTES:
 1.) CONCRETE: 4,000 PSI MINIMUM AFTER 28 DAYS
 2.) DESIGN CONFORMS WITH 310 CMR 15.00, DEP TITLE 5 REGS, FOR ALL SEPTIC TANKS
 3.) ALL REINFORCEMENT PER ASTM C1227-93
 4.) TEES AND GAS BAFFLE SOLD SEPARATELY
 5.) TONGUE AND GROOVE JOINT SEALED WITH BUTYLE RESIN
 6.) ALSO AVAILABLE IN H-20 LOADING

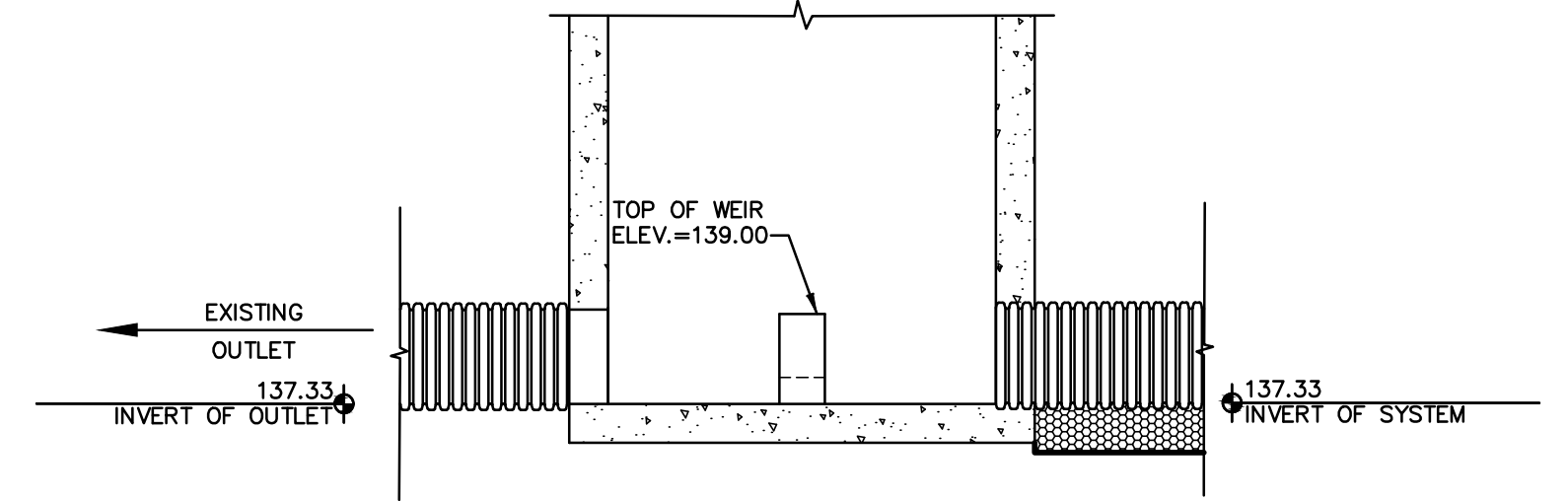


INSPECTION PORT DETAIL
 NOT TO SCALE

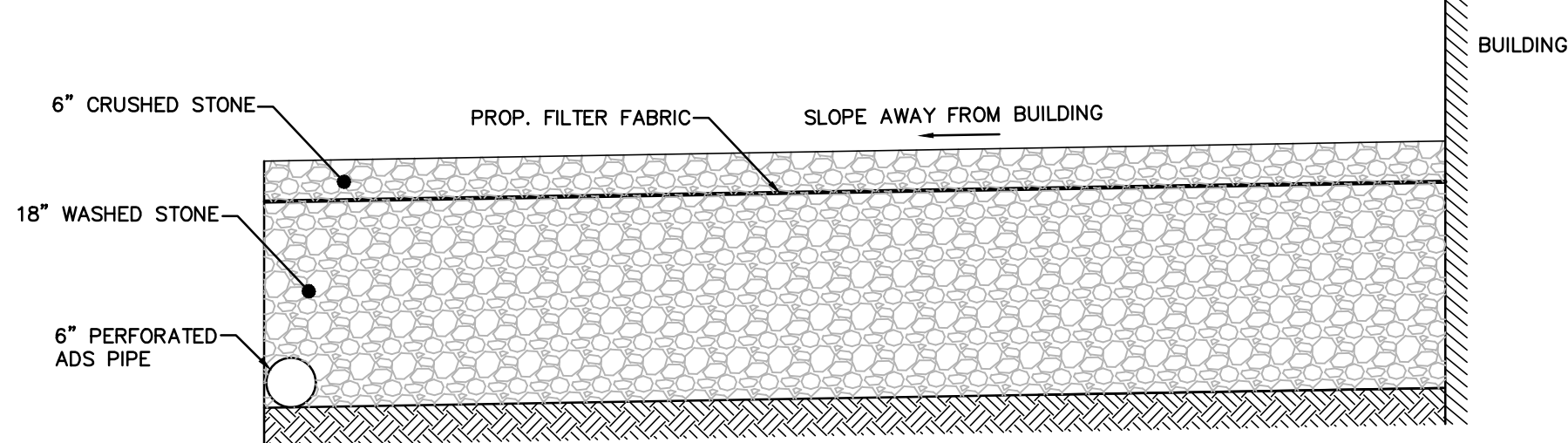
NOTES:
 1. INSPECTION PORT MUST BE CONNECTED THROUGH KNOCK-OUT LOCATED AT CENTER OF CHAMBER.
 2. ALL SCHEDULE 40 FITTINGS TO BE SOLVENT CEMENTED.



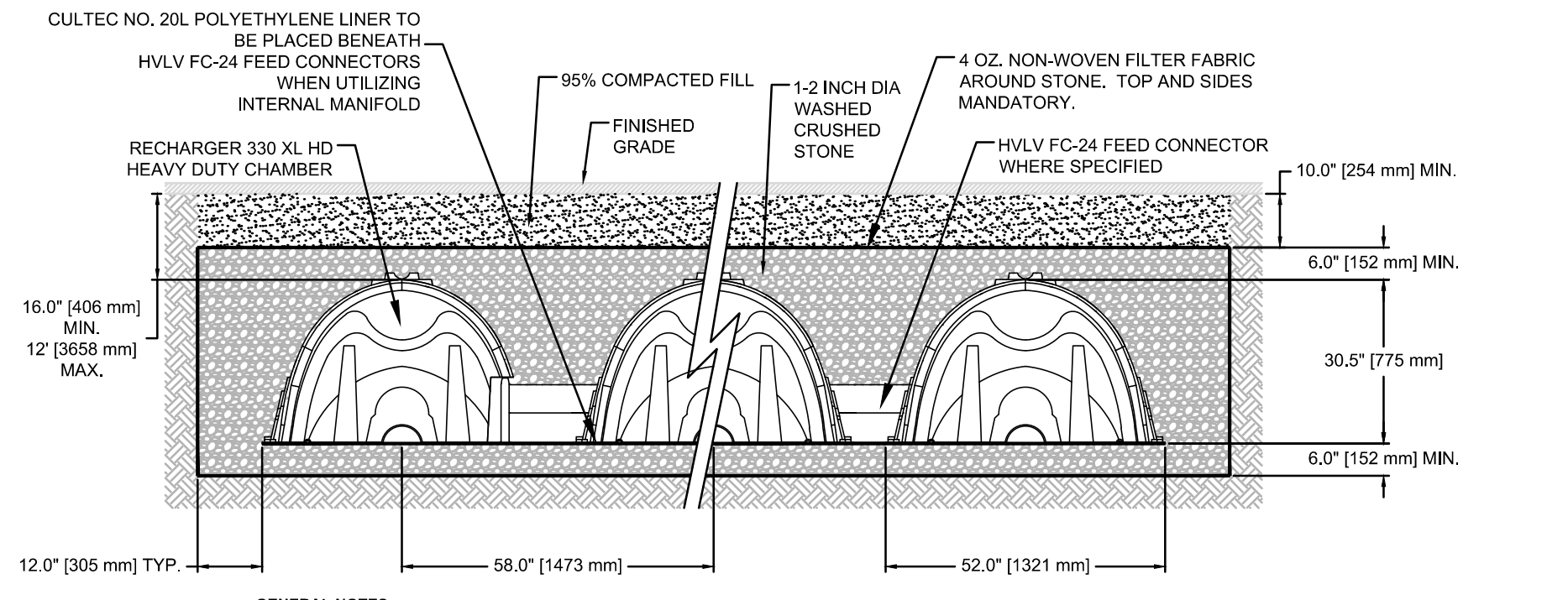
BAFFLE DETAIL
 NOT TO SCALE



OUTLET CONTROL STRUCTURE
 NOT TO SCALE

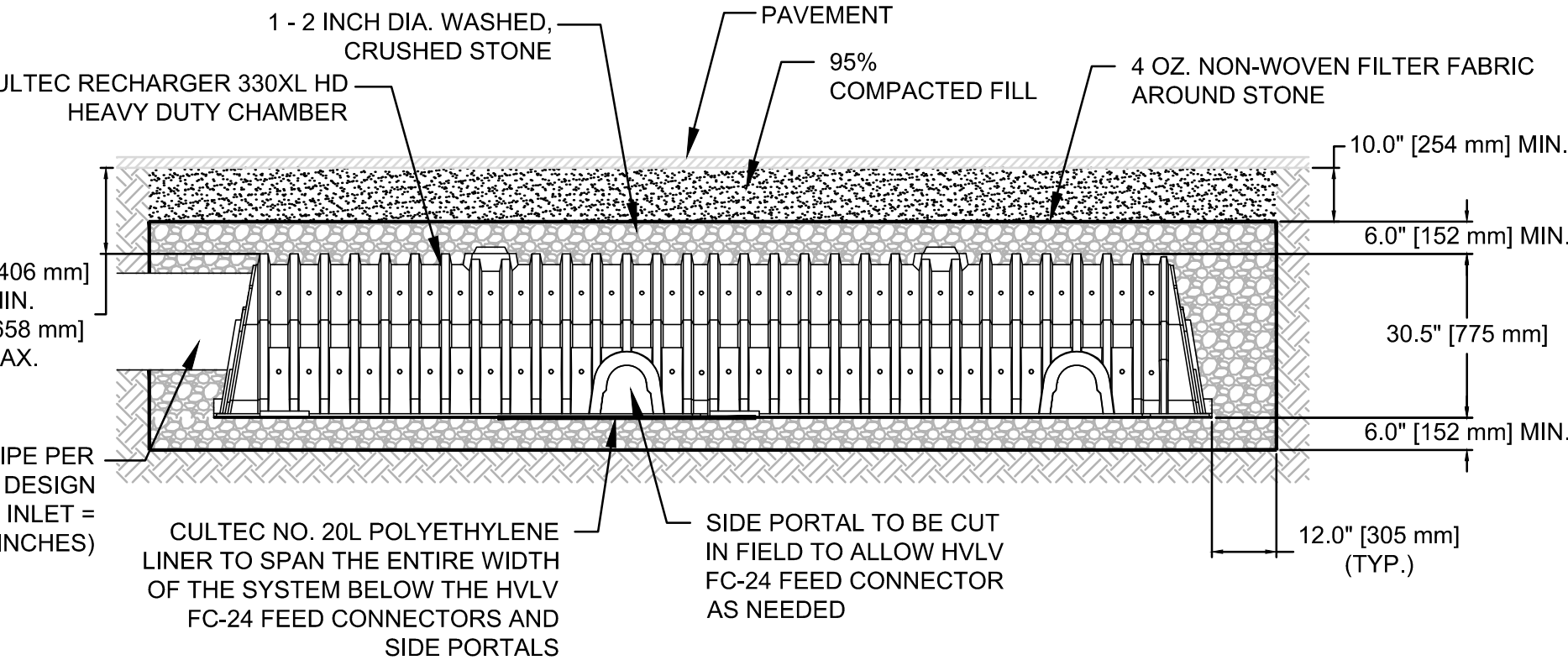


STONE WALK DETAIL
 NOT TO SCALE



TYPICAL CROSS SECTION

GENERAL NOTES:
 RECHARGER 330XL HD BY CULTEC, INC. OF BROOKFIELD, CT. STORAGE PROVIDED = 11.32 CF/FT PER DESIGN UNIT. REFER TO CULTEC, INC.'S CURRENT RECOMMENDED INSTALLATION GUIDELINES. USE RECHARGER 330XL HD HEAVY DUTY FOR TRAFFIC AND/OR H-25 APPLICATIONS.
 ALL RECHARGER 330XL HD HEAVY DUTY UNITS ARE MARKED WITH A COLOR STRIPE FORMED INTO THE PART ALONG THE LENGTH OF THE CHAMBER. ALL RECHARGER 330XL HD CHAMBERS MUST BE INSTALLED IN ACCORDANCE WITH ALL APPLICABLE LOCAL, STATE AND FEDERAL REGULATIONS.



MAINFOLD DETAIL

SUB-SURFACE DRAINAGE FACILITY DETAIL

CULTEC 330XL HD
 NOT TO SCALE

<p>Engineering Alliance, Inc. Civil Engineering & Land Planning Consultants 1950 Lafayette Road Portsmouth, NH 03801 Tel: (603) 610-7100 Fax: (603) 610-7101</p>	<p>PREPARED BY:</p>	<p>DATE</p>	<p>DESCRIPTION OF REVISION</p>
	<p>PROJECT:</p>	<p>DATE:</p>	<p>DATE</p>
<p>APPLICANT:</p>	<p>PROJECT #:</p>	<p>DATE:</p>	<p>DESCRIPTION OF REVISION</p>
<p>Noto Partners, LLC 49 Water Street Wakefield, MA 01880</p>	<p>PROPOSED SITE PLAN 922 Lynnfield Street Lynnfield, Massachusetts (Tax Map 53 Lot 2586)</p>	<p>DATE: December 22, 2022</p>	<p>DESCRIPTION OF REVISION</p>
<p>DWG. NO. D-2</p>	<p>DRAWING TITLE: Construction Details II</p>	<p>DWG FILE NAME: 22-82701</p>	<p>DESCRIPTION OF REVISION</p>
<p>DESIGN BY: Calvin Reach</p>	<p>CHECKED BY: Richard A. Savo, P.E.</p>	<p>SCALE: AS NOTED</p>	<p>DESCRIPTION OF REVISION</p>