



### LEGEND

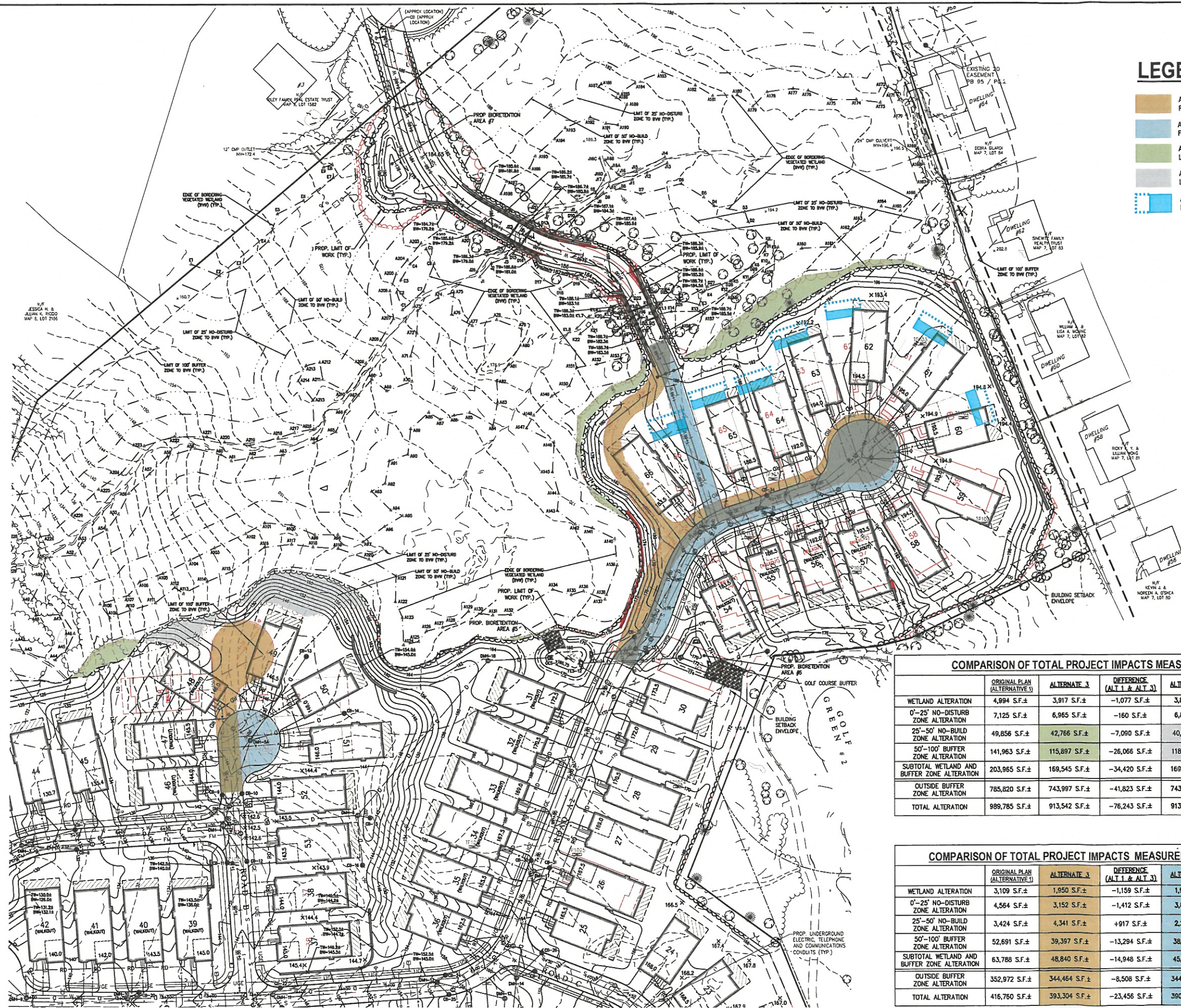
- ALTERNATIVE 3 PAVEMENT FOOTPRINT
- ALTERNATIVE 3R PAVEMENT FOOTPRINT
- ALTERNATIVE 3 REDUCED LIMIT OF WORK
- ALTERNATIVE 3R INCREASED LIMIT OF WORK
- ALTERNATIVE 3 DWELLING LOCATION

**The Morin-Cameron GROUP, INC.**

CIVIL ENGINEERS, ENVIRONMENTAL CONSULTANTS  
LAND SURVEYORS, LAND USE PLANNERS  
66 EDM STREET, DANVERS, MASSACHUSETTS 01923  
P. 978-777-8588, W. WWW.MORINCAMERON.COM

SURVEY BY: ESE  
DRAWN BY: DLP  
CHECKED BY: SPC  
APPROVED BY: SPC  
SCALE: AS NOTED  
DATE: MARCH 28, 2024

NO.	REVISIONS	DATE
	DESCRIPTION	



COMPARISON OF TOTAL PROJECT IMPACTS MEASURED TO LIMIT OF WORK						
	ORIGINAL PLAN (ALTERNATIVE 1)	ALTERNATE 3	DIFFERENCE (ALT 1 & ALT 3)	ALTERNATE 3R	DIFFERENCE (ALT 3 & ALT 3R)	DIFFERENCE (ALT 1 & ALT 3R)
WETLAND ALTERATION	4,994 S.F.±	3,917 S.F.±	-1,077 S.F.±	3,870 S.F.±	-47 S.F.±	-1,124 S.F.±
0'-25' NO-DISTURB ZONE ALTERATION	7,125 S.F.±	6,965 S.F.±	-160 S.F.±	6,812 S.F.±	-153 S.F.±	-340 S.F.±
25'-50' NO-BUILD ZONE ALTERATION	49,856 S.F.±	42,766 S.F.±	-7,090 S.F.±	40,526 S.F.±	-2,240 S.F.±	-9,330 S.F.±
50'-100' BUFFER ZONE ALTERATION	141,963 S.F.±	115,897 S.F.±	-26,066 S.F.±	118,175 S.F.±	+2,278 S.F.±	-23,788 S.F.±
SUBTOTAL WETLAND AND BUFFER ZONE ALTERATION	203,965 S.F.±	169,545 S.F.±	-34,420 S.F.±	169,383 S.F.±	-162 S.F.±	-34,582 S.F.±
OUTSIDE BUFFER ZONE ALTERATION	785,820 S.F.±	743,997 S.F.±	-41,823 S.F.±	743,890 S.F.±	-107 S.F.±	-41,930 S.F.±
<b>TOTAL ALTERATION</b>	<b>989,785 S.F.±</b>	<b>913,542 S.F.±</b>	<b>-76,243 S.F.±</b>	<b>913,273 S.F.±</b>	<b>-269 S.F.±</b>	<b>-76,512 S.F.±</b>

COMPARISON OF TOTAL PROJECT IMPACTS MEASURED TO IMPERVIOUS SURFACE						
	ORIGINAL PLAN (ALTERNATIVE 1)	ALTERNATE 3	DIFFERENCE (ALT 1 & ALT 3)	ALTERNATE 3R	DIFFERENCE (ALT 3 & ALT 3R)	DIFFERENCE (ALT 1 & ALT 3R)
WETLAND ALTERATION	3,109 S.F.±	1,950 S.F.±	-1,159 S.F.±	1,948 S.F.±	-2 S.F.±	-1,161 S.F.±
0'-25' NO-DISTURB ZONE ALTERATION	4,564 S.F.±	3,152 S.F.±	-1,412 S.F.±	3,036 S.F.±	-114 S.F.±	-1,526 S.F.±
25'-50' NO-BUILD ZONE ALTERATION	3,424 S.F.±	4,341 S.F.±	+917 S.F.±	2,228 S.F.±	-2,113 S.F.±	-1,196 S.F.±
50'-100' BUFFER ZONE ALTERATION	52,691 S.F.±	39,397 S.F.±	-13,294 S.F.±	38,172 S.F.±	-1,225 S.F.±	-14,519 S.F.±
SUBTOTAL WETLAND AND BUFFER ZONE ALTERATION	63,788 S.F.±	48,840 S.F.±	-14,948 S.F.±	45,386 S.F.±	-3,454 S.F.±	-18,402 S.F.±
OUTSIDE BUFFER ZONE ALTERATION	352,972 S.F.±	344,464 S.F.±	-8,508 S.F.±	344,878 S.F.±	+414 S.F.±	-8,094 S.F.±
<b>TOTAL ALTERATION</b>	<b>416,760 S.F.±</b>	<b>393,304 S.F.±</b>	<b>-23,456 S.F.±</b>	<b>390,264 S.F.±</b>	<b>-3,040 S.F.±</b>	<b>-26,496 S.F.±</b>

PLAN  
SCALE: 1" = 50'

SITE DEVELOPMENT PLANS FOR THE REGENCY AT  
 LYNNFIELD SENIOR HOUSING DEVELOPMENT  
 LOCATED AT  
 1301 MAIN STREET  
 LYNNFIELD, MASSACHUSETTS  
 (PORTION OF ASSESSOR'S MAP 13, PARCEL 1000)  
 PREPARED FOR:  
**TOLL BROS., INC.**

**ALTERNATIVE 3R CONCEPT OVERLAY**  
 DRAWING NO. 1 OF 1