

Demonstration Bank Planting

Rotary Park & Pillings Pond, Lynnfield, MA

Figure 1. Project Site Selection



Rotary Park

Summer Street

Location of demonstration
bank plantings

Pillings Pond

This location was chosen based on site visits and conversations with the Conservation Director.

Approximate area is ~ 2,000 square feet

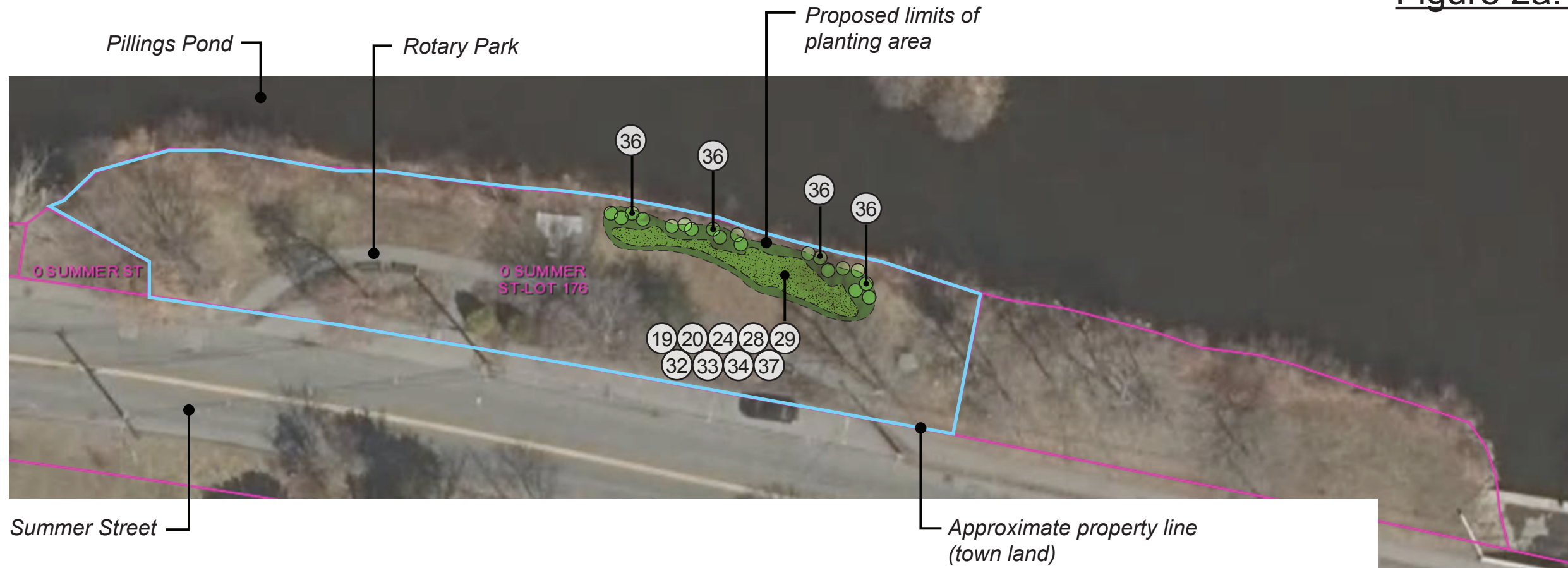
Portions of the bank at this location have eroded and existing vegetation has been damaged due to foot traffic from fisherman and park users and excessive pruning.

Accordingly, this location will benefit the most from the demonstration bank plantings



167 Main Street, PO Box 716, Rowley Massachusetts 01969 USA
978 948-7717 Office - 978 948-7718 Fax

Figure 2a. Low Level Planting Plan
Pillings Pond | Lynnfield, MA



Planting Notes:

1. Disturbed soils will be planted with our custom wetland and upland seed mixes.
2. The entire planted area is to be covered with salt marsh hay to retain soil moisture and protect against seed predation by birds and small mammals.
3. Plants to be distributed by an ecological restoration specialist. Exact plant locations will be determined in the field based on site-specific planting conditions and micro-topography.
4. The new plantings will be irrigated for one full growing season or until the seed and plant material is established.
5. Monthly inspections will be conducted for the first growing season and treatment/removal of invasive species will be implemented as needed.
6. Care is to be taken in removing invasive plant material to minimize disturbance to existing native plant species.

Proposed Plant Palette | Small Scale Plantings | Pillings Pond Shoreline

ID	Common Name	Botanical Name	Flower Period	Color
19	N Golden Alexanders	<i>Zizia aurea</i>	Early Spring	Yellow
20	N Wild golden glow	<i>Rudbeckia laciniata</i>	Mid-late Spring	Yellow
21	N Calico aster	<i>Symphyotrichum lateriflorum</i>	Late Spring	White
22	N Gray goldenrod	<i>Solidago nemoralis</i>	Late Spring	Yellow
23	* Butterfly Blue	<i>Scabiosa</i>	Summer	Blue
24	* Pink Tickseed	<i>Coreopsis rosea</i>	Summer	Pink/Purple
25	N Yellow wild indigo	<i>Baptisia tinctoria</i>	Early Summer	Yellow
26	N Bluebell	<i>Campanula rotundifolia</i>	Early-late Spring	Blue
27	N Sunflower	<i>Helianthus divaricatus</i>	Late Summer	Yellow
28	N Sundial lupine	<i>Lupinus perennis</i>	Early Summer	Pale Blue
29	N Axillary goldenrod	<i>Solidago caesia</i>	Late Summer-Early Fall	Yellow
30	N Smooth American Aster	<i>Symphyotrichum laeve</i>	Late Fall	Lavender
31	I Wild bergamot	<i>Monarda fistulosa</i>	Summer	Purple
32	N Butterfly weed	<i>Asclepias tuberosa</i>	Summer	Orange and Yellow
33	* Wild blue indigo	<i>Baptisia australis</i>	Early Summer	Blue
34	Wild blue phlox	<i>Phlox divaricata</i>	Spring	Lavender/Blue
35	* Anise hyssop	<i>Agastache rugosa</i>	Summer	Purple
36	N Joe-pye weed	<i>Eutrochium spp.</i>	Summer	Pink/Purple
37	* Purple Coneflower	<i>Echinacea purpurea</i>	Summer	Purple/Pink



Michael J. DeRosa

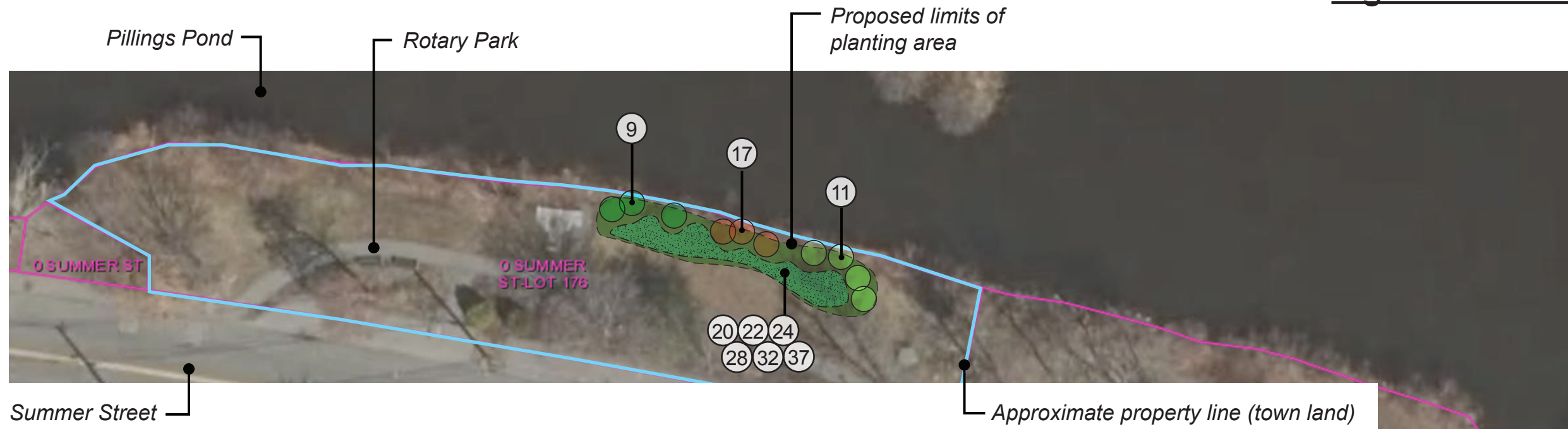
Michael J. DeRosa
PWS No. 2250

MJD/eg/ledr
June 29, 2020



167 Main Street
P.O. Box 716
Rowley, Massachusetts
USA
978.948.7717 Office
derosaenvironmental.com

Figure 2b. Medium Level Planting Plan
Pillings Pond | Lynnfield, MA



Planting Notes:

1. Disturbed soils will be planted with our custom wetland and upland seed mixes.
2. The entire planted area is to be covered with salt marsh hay to retain soil moisture and protect against seed predation by birds and small mammals.
3. Plants to be distributed by an ecological restoration specialist. Exact plant locations will be determined in the field based on site-specific planting conditions and micro-topography.
4. The new plantings will be irrigated for one full growing season or until the seed and plant material is established.
5. Monthly inspections will be conducted for the first growing season and treatment/removal of invasive species will be implemented as needed.
6. Care is to be taken in removing invasive plant material to minimize disturbance to existing native plant species.

Proposed Plant Palette | Medium Scale Plantings | Pillings Pond Shoreline

ID		Common Name	Botanical Name	Flower Period	Color
8	*	Ninebark	<i>Physocarpus opulifolius</i>	Early Spring	White
9	N	Serviceberry	<i>Amelanchier canadensis</i>	Early Spring	White
10	N	Coastal sweet-pepperbush	<i>Clethra alnifolia</i>	Late Spring	White
11	N	Highbush blueberry	<i>Vaccinium corymbosum</i>	Late Spring	White
12	N	Smooth arrowwood	<i>Viburnum dentatum</i>	Late Spring	Red
13	N	Rosy meadowsweet	<i>Spiraea tomentosa</i>	Summer	Pink
14	N	Eastern Red-Cedar	<i>Juniperus virginiana</i>	Evergreen	Evergreen
15	N	New Jersey Tea	<i>Ceanothus americanus</i>	Early Spring	White
16	N	Bearberry	<i>Arctostaphylos uva-ursi</i>	Fall color	Pink or White
17	N	Red Osier Dogwood	<i>Cornus amomum</i>	Fall Color	Red
18	N	Winterberry	<i>Ilex verticillata</i>	Winter Color	Red
19	N	Golden Alexanders	<i>Zizia aurea</i>	Early Spring	Yellow
20	N	Wild golden glow	<i>Rudbeckia laciniata</i>	Mid-late Spring	Yellow
21	N	Calico aster	<i>Symphyotrichum lateriflorum</i>	Late Spring	White
22	N	Gray goldenrod	<i>Solidago nemoralis</i>	Late Spring	Yellow
23	*	Butterfly Blue	<i>Scabiosa</i>	Summer	Blue
24	*	Pink Tickseed	<i>Coreopsis rosea</i>	Summer	Pink/Purple
25	N	Yellow wild indigo	<i>Baptisia tinctoria</i>	Early Summer	Yellow
26	N	Bluebell	<i>Campanula rotundifolia</i>	Early-late Spring	Blue
27	N	Sunflower	<i>Helianthus divaricatus</i>	Late Summer	Yellow
28	N	Sundial lupine	<i>Lupinus perennis</i>	Early Summer	Pale Blue
29	N	Axillary goldenrod	<i>Solidago caesia</i>	Late Summer-Early Fall	Yellow
30	N	Smooth American Aster	<i>Symphyotrichum laeve</i>	Late Fall	Lavender
31	I	Wild bergamot	<i>Monarda fistulosa</i>	Summer	Purple
32	N	Butterfly weed	<i>Asclepias tuberosa</i>	Summer	Orange and Yellow
33	*	Wild blue indigo	<i>Baptisia australis</i>	Early Summer	Blue
34	*	Wild blue phlox	<i>Phlox divaricata</i>	Spring	Lavender/Blue
35	*	Anise hyssop	<i>Agastache rugosa</i>	Summer	Purple
36	N	Joe-pye weed	<i>Eutrochium spp.</i>	Summer	Pink/Purple
37	*	Purple Coneflower	<i>Echinacea purpurea</i>	Summer	Purple/Pink



Michael J. DeRosa

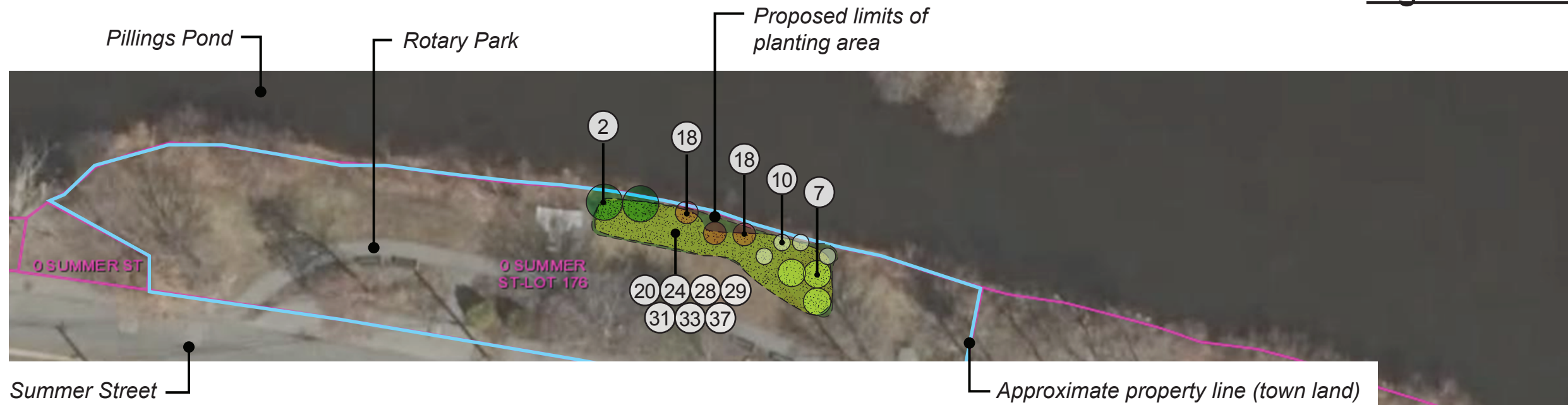
Michael J. DeRosa
PWS No. 2250

MJD/eg/ledr
June 29, 2020



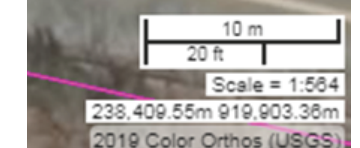
167 Main Street
P.O. Box 716
Rowley, Massachusetts
USA
978.948.7717 Office
derosaenvironmental.com

Figure 2c. Large Scale Planting Plan
 Pillings Pond | Lynnfield, MA



Proposed Plant Palette | Medium Scale Plantings | Pillings Pond Shoreline

ID	Common Name	Botanical Name	Flower Period	Color
1	N American beech	<i>Fagus grandifolia</i>	Fall color	Yellow
2	N Red Maple	<i>Acer rubrum</i>	Fall color	Red
3	N Red Oak	<i>Quercus rubra</i>	Fall color	Red
4	N Shagbark Hickory	<i>Carya ovata</i>	Fall color	Yellow
5	N Tupelo	<i>Nyssa sylvatica</i>	Fall color	Orange and Yellow
6	N Gray Birch	<i>Betula populifolia</i>	Fall color	Yellow
7	N River Birch	<i>Betula nigra</i>	Fall color	Yellow
8	* Ninebark	<i>Physocarpus opulifolius</i>	Early Spring	White
9	N Serviceberry	<i>Amelanchier canadensis</i>	Early Spring	White
10	N Coastal sweet-pepperbush	<i>Clethra alnifolia</i>	Late Spring	White
11	N Highbush blueberry	<i>Vaccinium corymbosum</i>	Late Spring	White
12	N Smooth arrowwood	<i>Viburnum dentatum</i>	Late Spring	Red
13	N Rosy meadowsweet	<i>Spiraea tomentosa</i>	Summer	Pink
14	N Eastern Red-Cedar	<i>Juniperus virginiana</i>	Evergreen	Evergreen
15	N New Jersey Tea	<i>Ceanothus americanus</i>	Early Spring	White
16	N Bearberry	<i>Arctostaphylos uva-ursi</i>	Fall color	Pink or White
17	N Red Osier Dogwood	<i>Cornus amomum</i>	Fall Color	Red
18	N Winterberry	<i>Ilex verticillata</i>	Winter Color	Red
19	N Golden Alexanders	<i>Zizia aurea</i>	Early Spring	Yellow
20	N Wild golden glow	<i>Rudbeckia laciniata</i>	Mid-late Spring	Yellow
21	N Calico aster	<i>Symphotrichum lateriflorum</i>	Late Spring	White
22	N Gray goldenrod	<i>Solidago nemoralis</i>	Late Spring	Yellow
23	* Butterfly Blue	<i>Scabiosa</i>	Summer	Blue
24	* Pink Tickseed	<i>Coreopsis rosea</i>	Summer	Pink/Purple
25	N Yellow wild indigo	<i>Baptisia tinctoria</i>	Early Summer	Yellow
26	N Bluebell	<i>Campanula rotundifolia</i>	Early-late Spring	Blue
27	N Sunflower	<i>Helianthus divaricatus</i>	Late Summer	Yellow
28	N Sundial lupine	<i>Lupinus perennis</i>	Early Summer	Pale Blue
29	N Axillary goldenrod	<i>Solidago caesia</i>	Late Summer-Early Fall	Yellow
30	N Smooth American Aster	<i>Symphotrichum laeve</i>	Late Fall	Lavender
31	I Wild bergamot	<i>Monarda fistulosa</i>	Summer	Purple
32	N Butterfly weed	<i>Asclepias tuberosa</i>	Summer	Orange and Yellow
33	* Wild blue indigo	<i>Baptisia australis</i>	Early Summer	Blue
34	N Wild blue phlox	<i>Phlox divaricata</i>	Spring	Lavender/Blue
35	* Anise hyssop	<i>Agastache rugosa</i>	Summer	Purple
36	N Joe-pye weed	<i>Eutrochium spp.</i>	Summer	Pink/Purple
37	* Purple Coneflower	<i>Echinacea purpurea</i>	Summer	Purple/Pink



Planting Notes:

1. Disturbed soils will be planted with our custom wetland and upland seed mixes.
2. The entire planted area is to be covered with salt marsh hay to retain soil moisture and protect against seed predation by birds and small mammals.
3. Plants to be distributed by an ecological restoration specialist. Exact plant locations will be determined in the field based on site-specific planting conditions and micro-topography.
4. The new plantings will be irrigated for one full growing season or until the seed and plant material is established.
5. Monthly inspections will be conducted for the first growing season and treatment/removal of invasive species will be implemented as needed.
6. Care is to be taken in removing invasive plant material to minimize disturbance to existing native plant species.



Michael J. DeRosa

Michael J. DeRosa
 PWS No. 2250

MJD/eg/ledr
 June 29, 2020



167 Main Street
 P.O. Box 716
 Rowley, Massachusetts
 USA
 978.948.7717 Office
 derosaenvironmental.com

Pillings Pond Cost Estimates

Small Scale

Common Name	Latin Name	Quantity	Size	\$
Golden Alexanders	Zizia aurea	10	1 gal	
Wild golden glow	Rudbeckia laciniata	10	1 gal	
Pink Tickseed	Coreopsis rosea	10	1 gal	
Sundial lupine	Lupinus perennis	10	1 gal	
Axillary goldenrod	Solidago caesia	10	1 gal	
Butterfly weed	Asclepias tuberosa	10	1 gal	
Wild blue indigo	Baptisia australis	10	1 gal	
Wild blue phlox	Phlox divaricata	10	1 gal	
Joe-pye weed	Eutrochium spp.	10	1 gal	
Purple Coneflower	Echinacea purpurea	10	1 gal	

\$923

Medium Scale

Common Name	Latin Name	Quantity	Size	\$
Serviceberry	Amelanchier canadensis	8	3 gal	
Highbush blueberry	Vaccinium corymbosum	8	3 gal	
Red Osier Dogwood	Cornus amomum	8	3 gal	
Wild golden glow	Rudbeckia laciniata	12	1 gal	
Axillary goldenrod	Solidago caesia	12	1 gal	
Pink Tickseed	Coreopsis rosea	12	1 gal	
Sundial lupine	Lupinus perennis	12	1 gal	
Butterfly weed	Asclepias tuberosa	12	1 gal	
Purple Coneflower	Echinacea purpurea	12	1 gal	

\$1,399

Large Scale

Common Name	Latin Name	Quantity	Size	\$
Red Maple	Acer rubrum	3	1.25-2"	
River Birch	Betula nigra	3	1.25-2"	
Sweet-pepperbush	Clethra alnifolia	9	3 gal	
Winterberry	Ilex verticillata	9	3 gal	
Wild golden glow	Rudbeckia laciniata	10	1 gal	
Pink Tickseed	Coreopsis rosea	10	1 gal	
Sundial lupine	Lupinus perennis	10	1 gal	
Axillary goldenrod	Solidago caesia	10	1 gal	
Wild blue indigo	Baptisia australis	10	1 gal	
Purple Coneflower	Echinacea purpurea	10	1 gal	
Wild bergamot	Monarda fistulosa	10	1 gal	

\$2,964

*prices are subject to change depending on nursery availability

** prices are subject to change depending on the quantity, sizes and species chosen for the site