

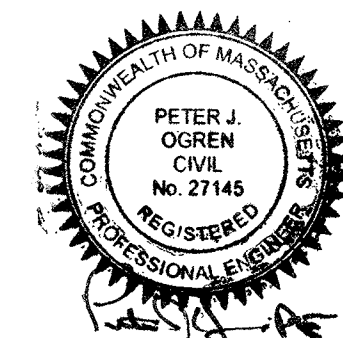
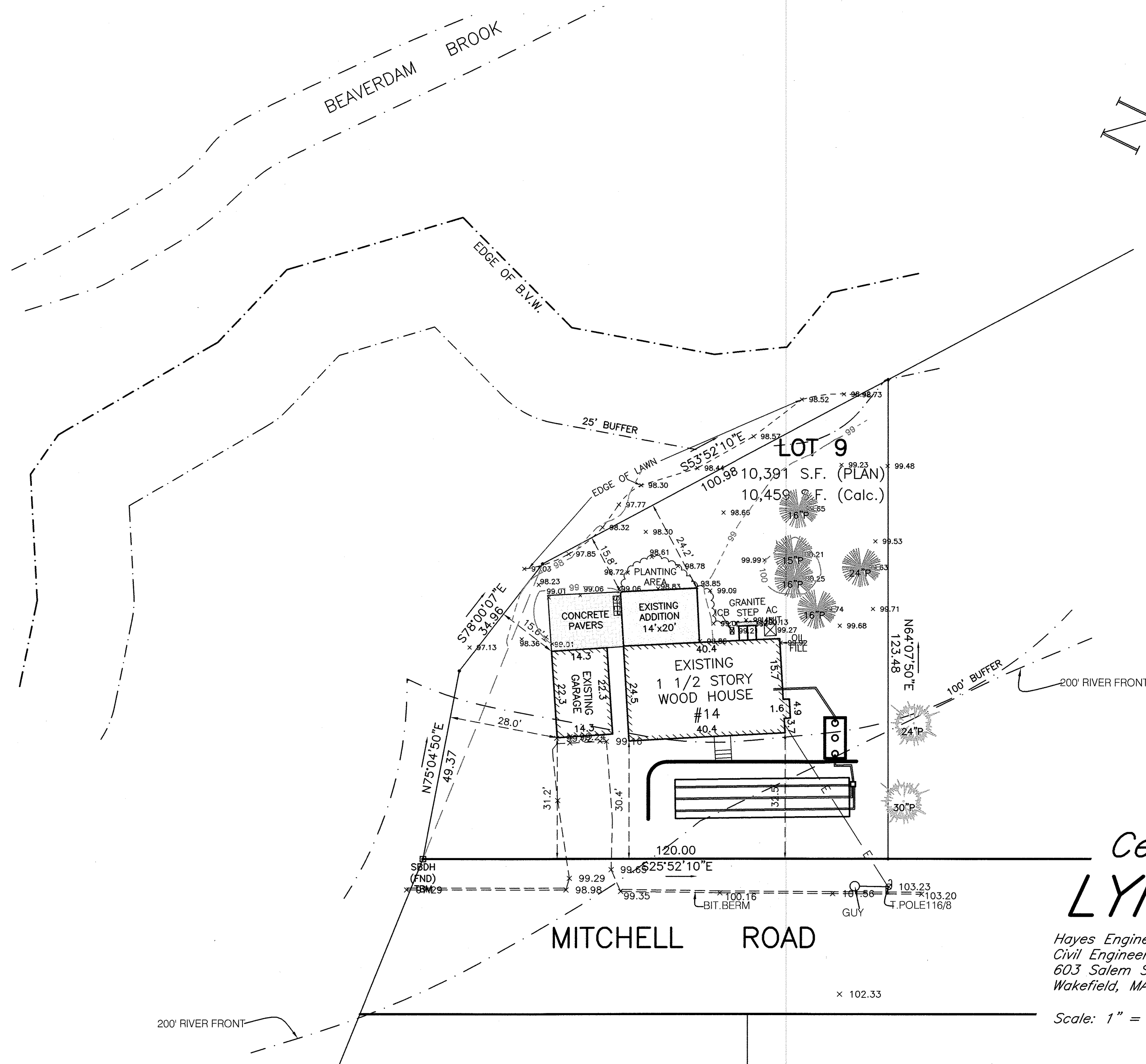
LEGEND OF SYMBOLS & ABBREVIATIONS:

x 100.0 EXIST. SPOT ELEVATION

---100--- EXIST. CONTOUR

● EXIST. TREE & SIZE

BENCHMARK REFERENCE DATUM: NGVD 29
TOP STONE BOUND LOT COR. ELEV.=98.84'



Plan to Accompany
Certificate of Compliance in
LYNNFIELD, MASS.

Hayes Engineering, Inc.
Civil Engineers & Land Surveyors
603 Salem Street
Wakefield, MA 01880

Telephone: 781.246.2800
Facsimile: 781.246.7596
www.hayeseng.com

Hayes

Scale: 1" = 20'



July 28, 2022

NOTES:
PERIMETER INFORMATION WAS TAKEN FROM THE FOLLOWING SOURCES:

- 1.) "PLAN AND PROFILE, MITCHELL ROAD, LYNNFIELD, MASS.", DATED AUGUST 18, 1953 AND PREPARED BY A.E. PROVOST, JR. ENG. RECORDED WITH THE ESSEX SOUTH REGISTRY OF DEEDS, PLAN BOOK 84, PLAN 9.
- 2.) PLAN OF LAND IN LYNNFIELD, MASS. PREPARED BY HARRY H. DENNING, C.E., RECORDED WITH THE ESSEX SOUTH REGISTRY OF DEEDS, PLAN BOOK 4274, PAGE 6.
- 3.) TOPOGRAPHIC FEATURES FROM FIELD SURVEY ON JULY 27, 2022 BY HAYES ENGINEERING, INC.

ZONE: RA

MINIMUM SETBACKS:

FRONT = 30'

SIDE = 15'

REAR = 20'

MIN. FRONTAGE = 110'
MIN. LOT AREA = 15,000 S.F.

OWNER: BRIAN C. GUSCOTT
#14 MITCHELL ROAD
MAP 20 PARCEL 1852
DEED REF. Bk.12965 / Pg.239