

**CURRENT OWNERSHIP:**  
WINDSOR ESTATES CONDOMINIUM  
LOT 25, DEED MAP 474, 1995

**PLAN REFERENCES:**  
PLAN BOOK 423 / PLAN 69  
PLAN BOOK 503 / PLAN 81

**PROJECT LOCUS:**  
527 SALEM STREET  
LYNNFIELD, MA 01904  
ASSESSOR'S MAP 51, LOT 742

**ZONE: EH**  
MINIMUM LOT AREA = 4 ACRES  
MINIMUM LOT FRONTAGE = 200'  
FRONT = 50'  
SIDE = 25'  
REAR = 50'

**LOT 2**  
**WINDSOR ESTATES**  
**611,219 S.F.**

AS BUILT INFILTRATION BASIN  
TOP OF BASIN = 683.02  
BOTTOM OF BASIN = 129.0

AS BUILT SUBSURFACE  
STORMWATER MANAGEMENT AREA  
1" MODELS W/10 INSPECTION POINTS

AS BUILT INFILTRATION BASIN  
TOP OF BASIN = 683.02  
BOTTOM OF BASIN = 129.0

EXISTING BUILDING  
UNITS 36, 37 & 38  
(PHASE XI)

**LEGEND OF SYMBOLS**

- EXISTING CONTOUR ———
- AS BUILT CONTOUR ———
- AS BUILT WATER ———
- AS BUILT WATER GATE ———
- AS BUILT WATER SERVICE SHUT OFF ———
- AS BUILT HYDRANT ———
- AS BUILT DRAIN ———
- AS BUILT CATCH BASIN ———
- AS BUILT STAIRS ———
- LIMIT OF BORROWING ———
- VEGETATED WETLANDS ———
- LIMIT OF 50' BUFFER TO BORROWING ———
- LIMIT OF 25' BUFFER TO BORROWING ———
- LIMIT OF 50' BUFFER TO BORROWING ———
- APPROXIMATE LOCATION OF PIPE RECHARGE CONNECTOR PIPE SYSTEM UNDERGROUND DRAINAGE SYSTEM REFERENCE NUMBER
- CONDOMINIUM UNIT NUMBERS
- CONC = CONCRETE
- FES = FLARED END SECTION
- INV. = INVERT
- EL. = ELEVATION (N.G.D. ±)
- HDP = HIGH DENSITY POLYETHYLENE
- RP = REINFORCED CONCRETE PIPE
- CP = CAST IRON

**REFERENCE DOCUMENTS:**

1. PERMITS INFORMATION TAKEN FROM THE PLAN ENTITLED "AS BUILT PLAN FOR THE WINDSOR ESTATES CONDOMINIUM" DATED SEPTEMBER 24, 2008, REVISED TO DECEMBER 14, 2009, SOUTH DISTRICT REGISTER OF DEEDS.
2. RESERVATIONS, RIGHTS, EASEMENTS AND RESTRICTIONS SET FORTH IN THE DEEDS, DISTRICT REGISTER OF DEEDS BOOK 29491, AS PAGE 273 AS AFFICED BY THE TOWN OF LYNNFIELD, MASSACHUSETTS, DISTRICT REGISTER OF DEEDS BOOK 29491, PAGE 270 AND ON APRIL 25, 2005 29491, PAGE 272.
3. ORDER OF RECORDING, TOWN OF LYNNFIELD, DISTRICT REGISTER OF DEEDS IN BOOK 28860, AS PAGE 28.
4. ORDER OF TAKING BY THE TOWN OF LYNNFIELD, DATED APRIL 25, 2005 29491, PAGE 272.
5. PLAN ENTITLED "PLAN OF LAND 525 SALEM STREET" DATED DISTRICT REGISTER OF DEEDS IN BOOK 29491, AS PAGE 273.
6. VARIANCE DECISION, DATED JANUARY 18, 2010, RECORDED IN BOOK 29491, AS PAGE 273.
7. SITE PLAN APPROVAL, DATED MAY 5, 2010, RECORDED WITH SAID REGISTER OF DEEDS IN BOOK 29491, PAGE 230.
8. VARIANCE DECISION, DATED MAY 5, 2010, RECORDED WITH SAID REGISTER OF DEEDS IN BOOK 29491, PAGE 230.
9. RECORD OF DEEDS IN BOOK 29491, PAGE 230.
10. RECORD OF DEEDS IN BOOK 29491, PAGE 230.
11. RECORD OF DEEDS IN BOOK 29491, PAGE 230.
12. RECORD OF DEEDS IN BOOK 29491, PAGE 230.
13. RECORD OF DEEDS IN BOOK 29491, PAGE 230.
14. RECORD OF DEEDS IN BOOK 29491, PAGE 230.
15. RECORD OF DEEDS IN BOOK 29491, PAGE 230.
16. RECORD OF DEEDS IN BOOK 29491, PAGE 230.
17. RECORD OF DEEDS IN BOOK 29491, PAGE 230.
18. RECORD OF DEEDS IN BOOK 29491, PAGE 230.
19. RECORD OF DEEDS IN BOOK 29491, PAGE 230.
20. RECORD OF DEEDS IN BOOK 29491, PAGE 230.

**NOTES:**

1. REVISIONS LISTED REFER TO THE WORK OF 1999.
2. LOCATIONS OF THE PIPE RECHARGE AREAS SHOWN ON THIS PLAN LABELLED "APPROXIMATE" AND ASSOCIATED CONNECTOR PIPES ARE BASED ON RECORD DRAWINGS PROVIDED BY THE PROPERTY OWNER AND HAVE NOT BEEN CHECKED IN THE FIELD.

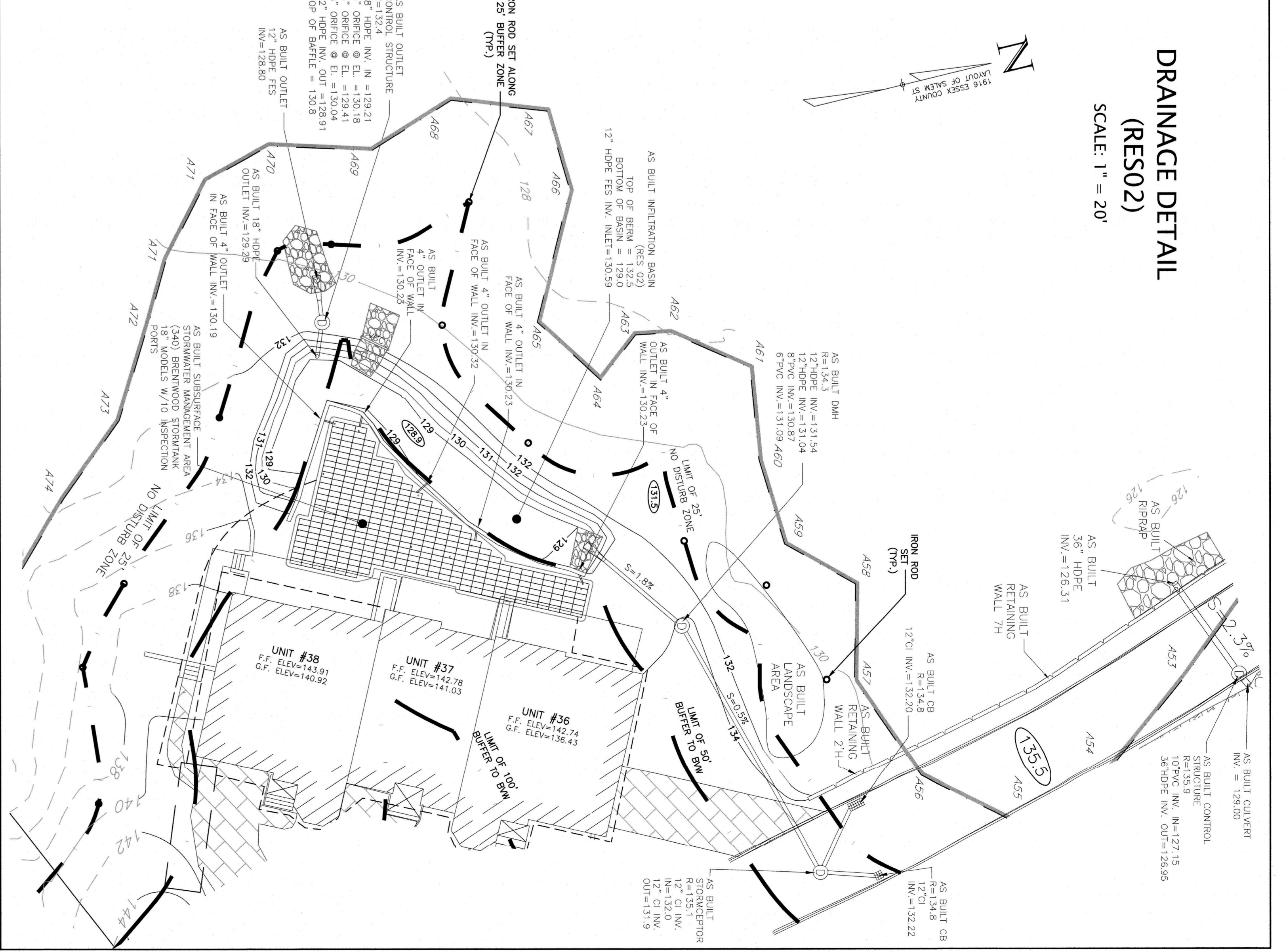
**WINDSOR ESTATES CONDOMINIUM**  
**AS BUILT PLAN**  
**IN**  
**LYNNFIELD, MA**

DATE: DECEMBER 27, 2018  
REVISED THROUGH JANUARY 4, 2021

SCALE: 1" = 40'  
0' 20' 40' 80'

"SHOWING AS BUILT SITE PLAN"

**WILLIAMS & SPARGES**  
REGISTERED PROFESSIONAL ENGINEERS  
101 WASHINGTON STREET  
SUITE 101  
LYNNFIELD, MA 01904  
PHONE: (978) 531-8088  
FAX: (978) 531-8200  
WWW.WILLIAMSANDSPARGES.COM



**DRAINAGE DETAIL (RES02)**  
SCALE: 1" = 20'

AS BUILT INFILTRATION BASIN (RES 02)  
TOP OF BASIN = 683.02  
BOTTOM OF BASIN = 129.0

AS BUILT SUBSURFACE STORMWATER MANAGEMENT AREA  
1" MODELS W/10 INSPECTION POINTS

AS BUILT INFILTRATION BASIN (RES 01)  
TOP OF BASIN = 683.02  
BOTTOM OF BASIN = 129.0

AS BUILT INFILTRATION BASIN (RES 03)  
TOP OF BASIN = 683.02  
BOTTOM OF BASIN = 129.0

AS BUILT INFILTRATION BASIN (RES 04)  
TOP OF BASIN = 683.02  
BOTTOM OF BASIN = 129.0

AS BUILT INFILTRATION BASIN (RES 05)  
TOP OF BASIN = 683.02  
BOTTOM OF BASIN = 129.0

AS BUILT INFILTRATION BASIN (RES 06)  
TOP OF BASIN = 683.02  
BOTTOM OF BASIN = 129.0

AS BUILT INFILTRATION BASIN (RES 07)  
TOP OF BASIN = 683.02  
BOTTOM OF BASIN = 129.0

AS BUILT INFILTRATION BASIN (RES 08)  
TOP OF BASIN = 683.02  
BOTTOM OF BASIN = 129.0

AS BUILT INFILTRATION BASIN (RES 09)  
TOP OF BASIN = 683.02  
BOTTOM OF BASIN = 129.0

AS BUILT INFILTRATION BASIN (RES 10)  
TOP OF BASIN = 683.02  
BOTTOM OF BASIN = 129.0

AS BUILT INFILTRATION BASIN (RES 11)  
TOP OF BASIN = 683.02  
BOTTOM OF BASIN = 129.0

AS BUILT INFILTRATION BASIN (RES 12)  
TOP OF BASIN = 683.02  
BOTTOM OF BASIN = 129.0

AS BUILT INFILTRATION BASIN (RES 13)  
TOP OF BASIN = 683.02  
BOTTOM OF BASIN = 129.0

AS BUILT INFILTRATION BASIN (RES 14)  
TOP OF BASIN = 683.02  
BOTTOM OF BASIN = 129.0

AS BUILT INFILTRATION BASIN (RES 15)  
TOP OF BASIN = 683.02  
BOTTOM OF BASIN = 129.0

AS BUILT INFILTRATION BASIN (RES 16)  
TOP OF BASIN = 683.02  
BOTTOM OF BASIN = 129.0

AS BUILT INFILTRATION BASIN (RES 17)  
TOP OF BASIN = 683.02  
BOTTOM OF BASIN = 129.0

AS BUILT INFILTRATION BASIN (RES 18)  
TOP OF BASIN = 683.02  
BOTTOM OF BASIN = 129.0

AS BUILT INFILTRATION BASIN (RES 19)  
TOP OF BASIN = 683.02  
BOTTOM OF BASIN = 129.0

AS BUILT INFILTRATION BASIN (RES 20)  
TOP OF BASIN = 683.02  
BOTTOM OF BASIN = 129.0