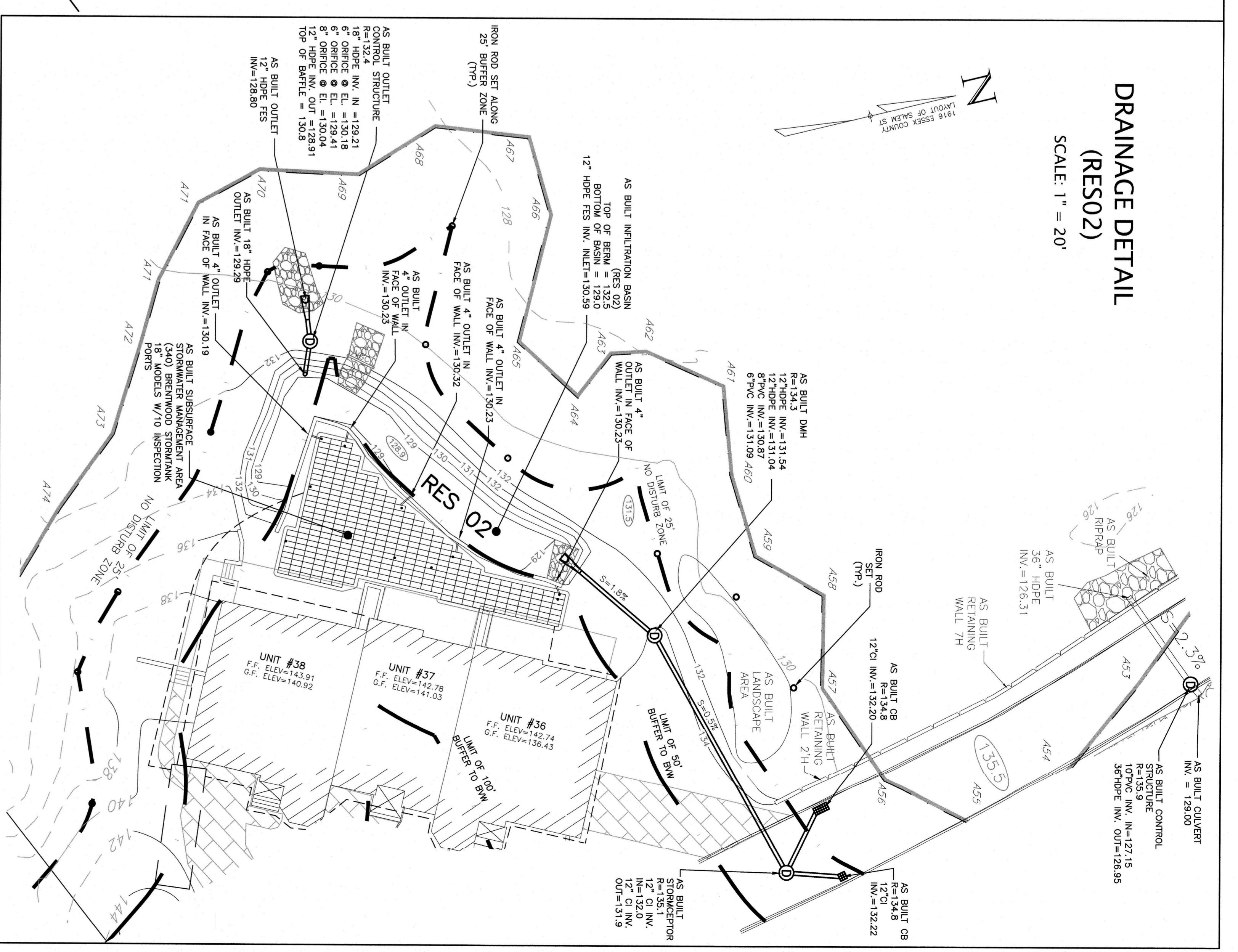


**DRAINAGE DETAIL (RES02)**  
SCALE: 1" = 20'



- NOTES:**
1. ELEVATIONS LISTED REFERENCE THE NOOD OF 1929.
  2. LOCATIONS OF THE ROOF RECHARGE AREAS SHOWN ON THIS PLAN LABELED "APPROXIMATE" AND ASSOCIATED CONNECTIVE CONDUIT AND MAIN NOT BEING LOCATED IN THE FIELD.

**LEGEND OF SYMBOLS**

- EXISTING CONTOUR ———
- AS BUILT CONTROL ———
- AS BUILT WATER ———
- AS BUILT WATER GATE ———
- AS BUILT WATER SERVICE SHUT OFF ———
- AS BUILT HYDRANT ———
- AS BUILT BRAIN ———
- AS BUILT CATCH BASIN ———
- AS BUILT SEWER ———
- LIMIT OF BORROWING VEGETATED WETLAND ———
- LIMIT OF 25' BUFFER TO BORROWING VEGETATED WETLAND ———
- LIMIT OF 50' BUFFER TO BORROWING VEGETATED WETLAND ———
- APPROXIMATE LOCATION OF ROOF RECHARGE CONNECTIVE PIPE SYSTEM ———
- CONDOMINIUM UNIT NUMBER ———
- PROPOSED SNOW STORAGE AREA ———
- CONC. = CONCRETE
- R = RANKED END SECTION
- R/W = INTERSECTION (N/C/D/O 29)
- N/F = NOW OR FORMERLY
- P = HIGH DENSITY POLYETHYLENE
- CI = CAST IRON

**"WINDSOR ESTATES CONDOMINIUM" AS BUILT PLAN**

IN  
**LYNNFIELD, MA**

DATE: JANUARY 4, 2021  
SCALE: 1" = 40'  
"TO ACCOMPANY OPERATION AND MAINTENANCE PLAN"