

01940

The MAGAZINE

Mitchell
method

How her
garden
grows

HELPING
HOPE BLOOM

SUMMER 2021
VOL. 4, NO. 2

A breath of fresh air

Venture down Grayland Road or Trog Hawley and you will find Beaver Dam Brook Reservation consisting, according to the town website, of more than 56 acres of conservation land and 137 acres of land owned by the Lynnfield Center Water District. Access is provided through the rear of the Colonial Shopping Center and the land, which contains Beaver Dam Brook, forms much of the watershed and recharge areas for the Lynnfield Center Water District wellfields. The protection of these wetlands is essential for the town's water supply.

PHOTOS: SPENSER HASAK



A beam of sunlight shines down on a dandelion growing at the reservation.



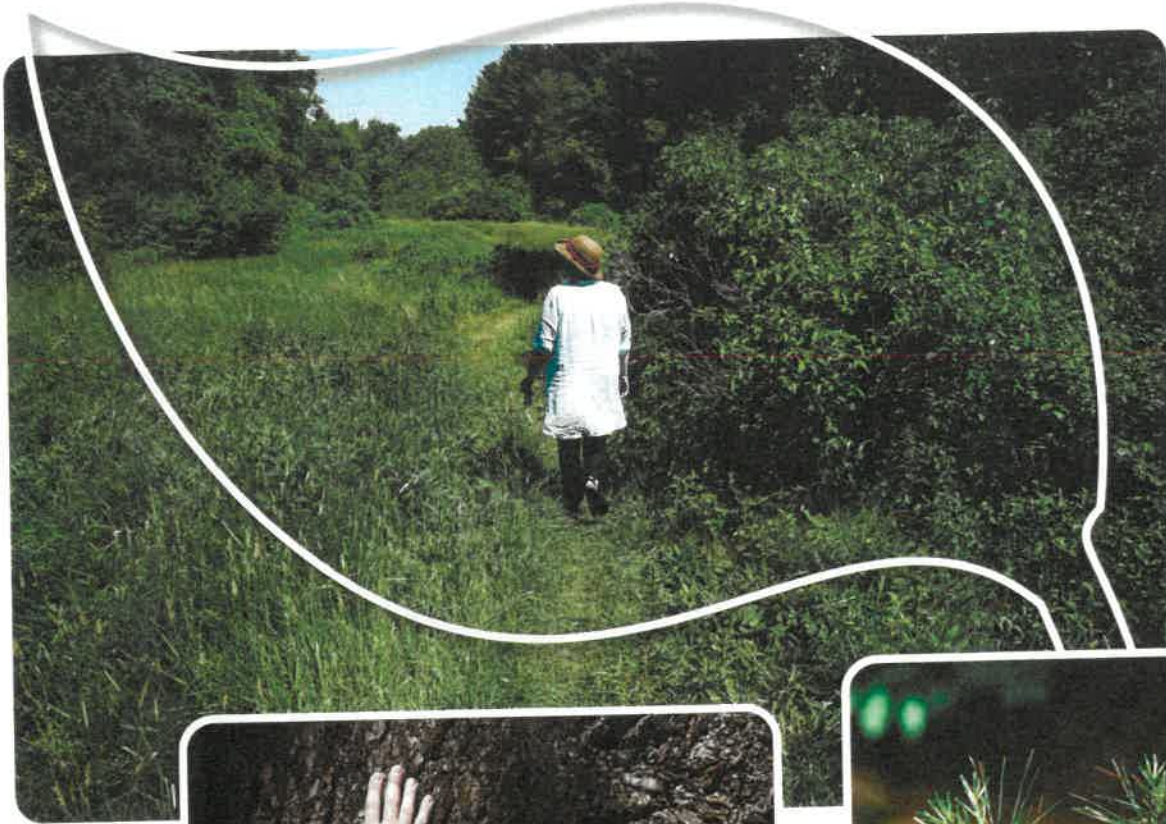
Lynnfield Conservation Commission member K. Erin Hohmann is in charge of looking over the Beaver Dam Brook Reservation.



Wildflowers bloom at the reservation.



Water flows through Beaver Dam Brook Reservation.



Paths snake their way through Beaver Dam Brook Reservation.



Hohmann runs her hand across a large tree.



A pine seedling grows.



Beaver Dam Brook Reservation is one of the Lynnfield Conservation Commission's nine conservation areas.