

Public Workshop Lynnfield/Wakefield Rail Trail Project

Lynnfield Recreational Path Committee

Middle School, Lynnfield, MA

March 27, 2018



Welcome to the Public Workshop - Overview

- Welcome and Introductions
- Purpose of the Workshop
- Format and Working Groups
- Description of the Proposed Rail Trail
- Break-out sessions
- Report Backs and Discussion
- Your input will be posted on the Town website

<https://www.town.lynnfield.ma.us/recreation-path-committee>

Introductions

- **Lynnfield Recreational Path Committee**
- **Representatives from Lynnfield**
- **Representatives from Wakefield**
- **WorldTech Engineering, LLC**
 - **Richard Benevento – President**
 - **Bill Mertz, PE - Vice President / Project Manager**
- **BETA Group, Inc**
 - **Randy Collins, Jr., RLA, ASLA - Senior Associate**
 - **Bill McGrath, PE – Associate**
- **LEC Environmental Consultants**
 - **Ann M. Marton, President**



Purpose of the Workshop

- This meeting is for you to help shape the project
 - Design team led by WorldTech is here to listen.
 - *How should the road crossings look?*
 - *What kind of screening will be used?*
 - *Should there be informational signs?*
- Whether the project should go forward is a different meeting
 - Selectmen have directed the committee to keep working on the project.
 - Future decisions by the Board of Selectmen

Purpose – *Why are we here?*

- ✓ Provide a project overview and status update
- ✓ Provide an overview of the MassDOT process (TIP funding)
 - *Construction funded through the State Transportation Improvement Program (STIP) for FY 2021 - \$9.2M.*
- ✓ Outline the next steps in the process
- ✓ Seek community input to inform the design
 - Hold breakout sessions for smaller group discussion on design topics

Wakefield / Lynnfield Rail Trail - Project Limits



Connections Plan



Recent Efforts / Current Status

- **Design Team has Submitted Preliminary (25%) Design**
 - ✓ Horizontal and Vertical Alignment of Trail
 - ✓ At-Grade Street Crossings General Layouts
 - ✓ Defined Access Locations and Parking Areas
 - ✓ Analysis of Reedy Meadow Crossing w/ Boardwalk
 - ✓ Assessment of Environmental Impacts
 - ✓ Preliminary Assessment of Landscape / Trail Screening Alternatives
- **Completed Geotechnical Investigations and Analysis**
- **Completed Preliminary Hydraulic Analysis**

design considerations

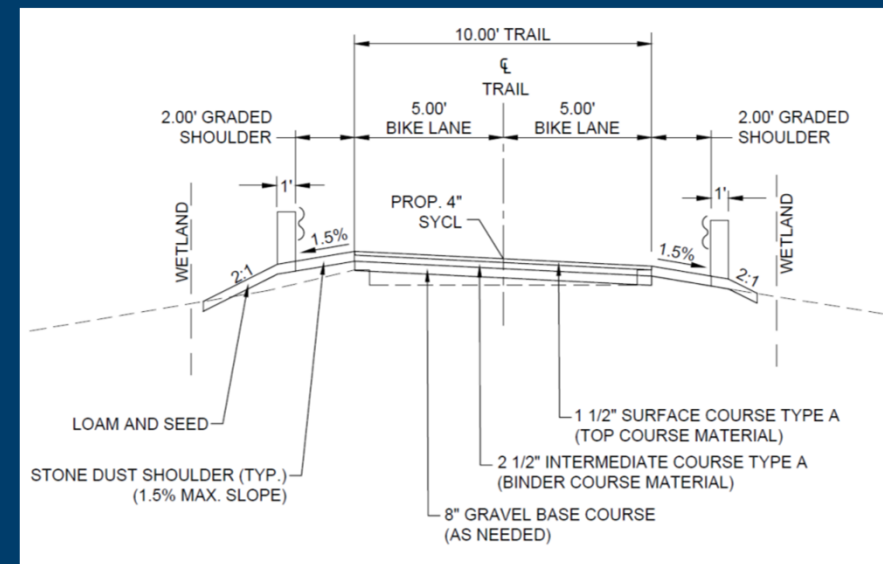
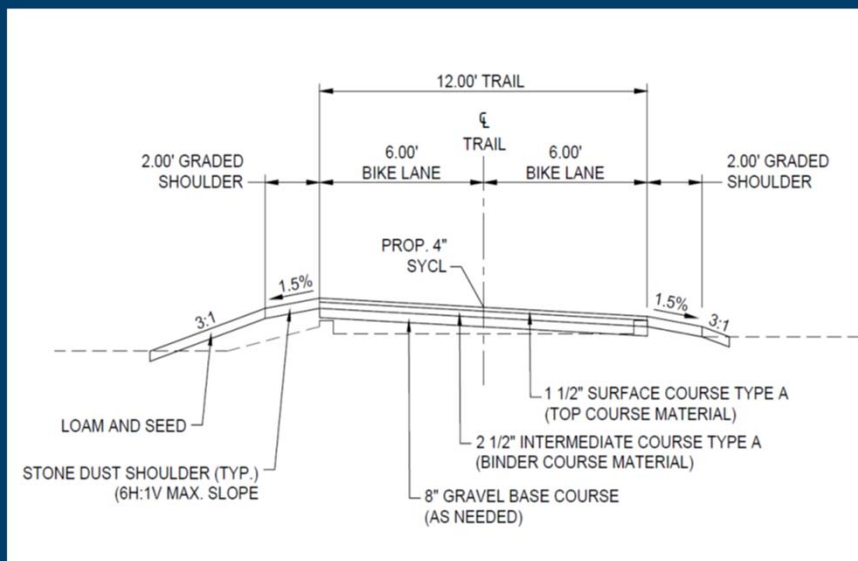


Design Considerations *(to be discussed in workgroups)*

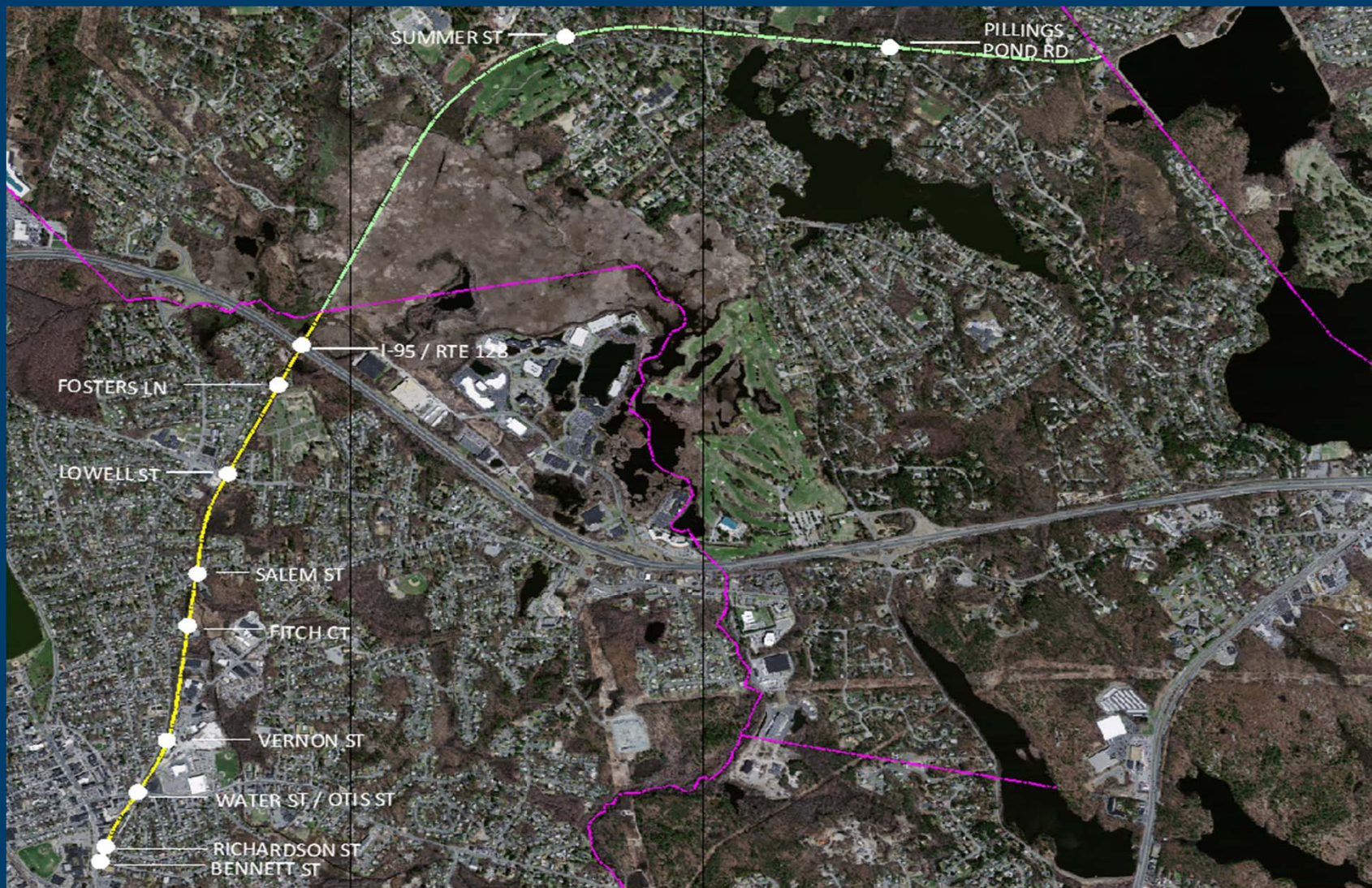
- ✓ Trail Access / Street Crossings / Parking
- ✓ Reedy Meadow Crossing / Environmental Resources
- ✓ Landscape Design / Screening / Trail Amenities
- ✓ Trail Safety - Bicycle / Pedestrian Safety

Trail Layout

- Horizontal Alignment - *follows alignment of RR bed*
- Vertical Alignment – *closely follows profile of exist embankment*



Trail Access - At Grade Crossings



Trail Access - At Grade Street Crossings

- At Grade Street Crossings

- Safety

- Clear Definition of Crossing
 - Advanced Warning Signs
 - Trail Alignment to Increase Sight Distance

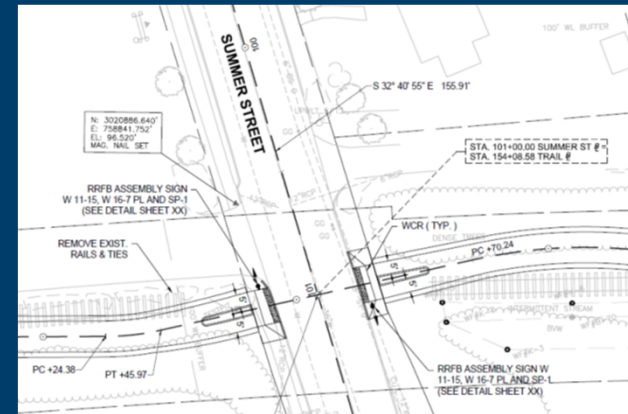
- Trail Access

- Recreational Users & Emergency Access

- Traffic Control

- Traffic Signs
 - Pedestrian Actuated Devices

- Landscaping



Street Crossings (Typical Detail)



Reedy Meadow Crossing

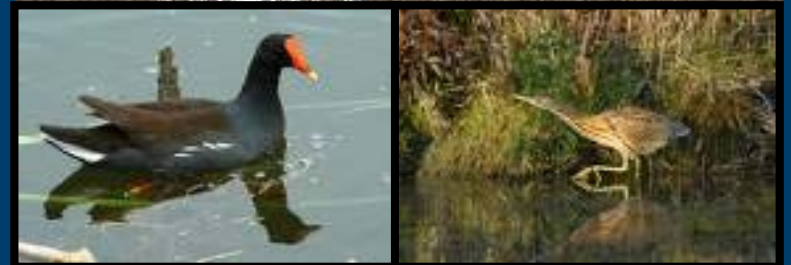
Considerations

- ✓ Environmental Sensitivity
- ✓ Safety / Emergency Response
- ✓ Cost
- ✓ Constructability and Maintenance



Environmental Considerations

- Early Environmental Coordination
- Environmental Permitting / Regulatory
 - *State and local*
 - *MEPA*
 - *Wetlands Protection Act*
- Reedy Meadow Rare Species
 - *NHESP Habitat Mapping & Consultation*



Elevated Boardwalk Structure

- Composite Materials
- Environmentally Conscious Design
- Supported by Micro-Piles
- Design to support emergency vehicle access



Landscape Design

Considerations

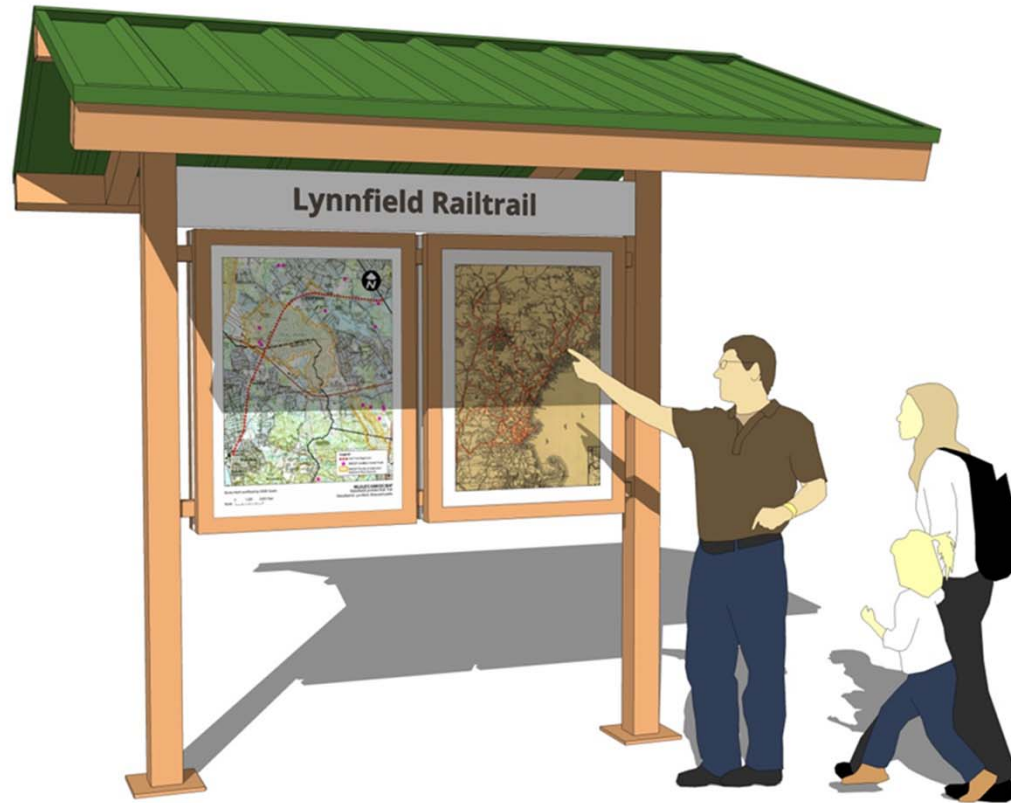
- Trailhead Design
 - Layout
 - Information Kiosks
 - Trail Markers
- Screening Alternatives
- Roadway Crossings
- Trail Amenities
- Low Maintenance Design



Trailhead Concept



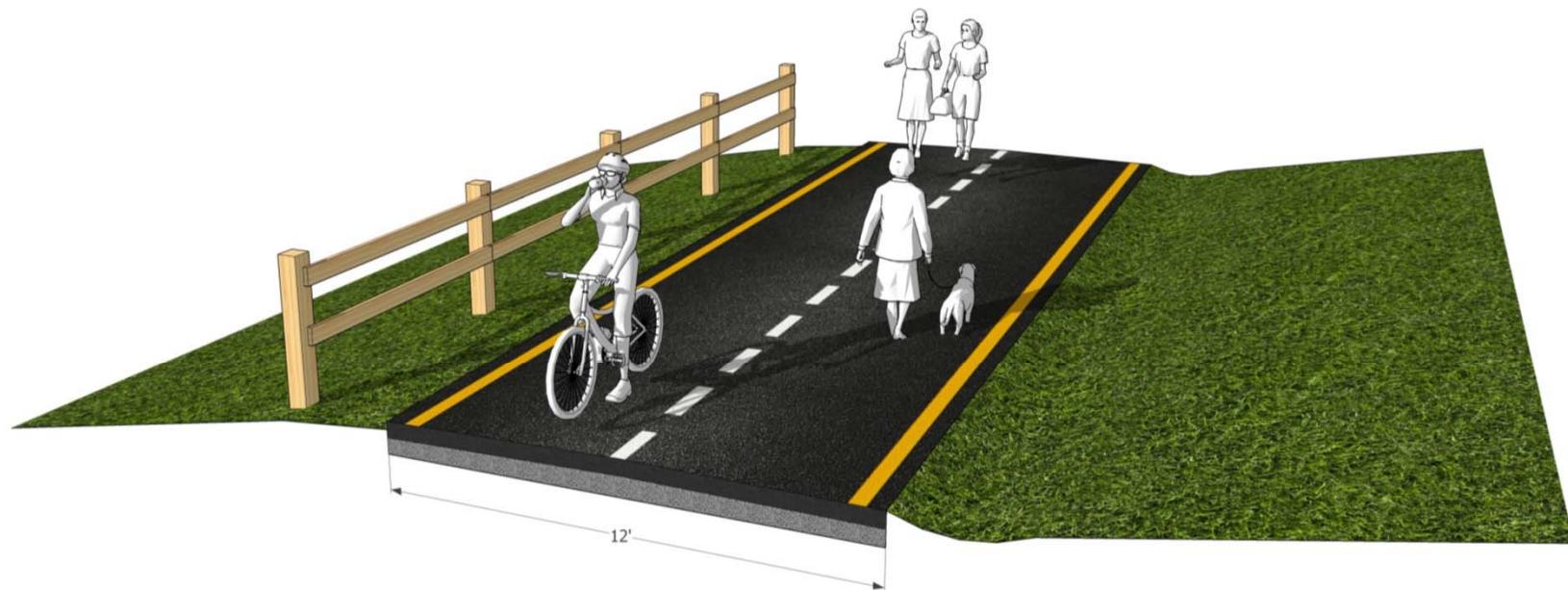
Trailhead Kiosk



Trailhead Markers



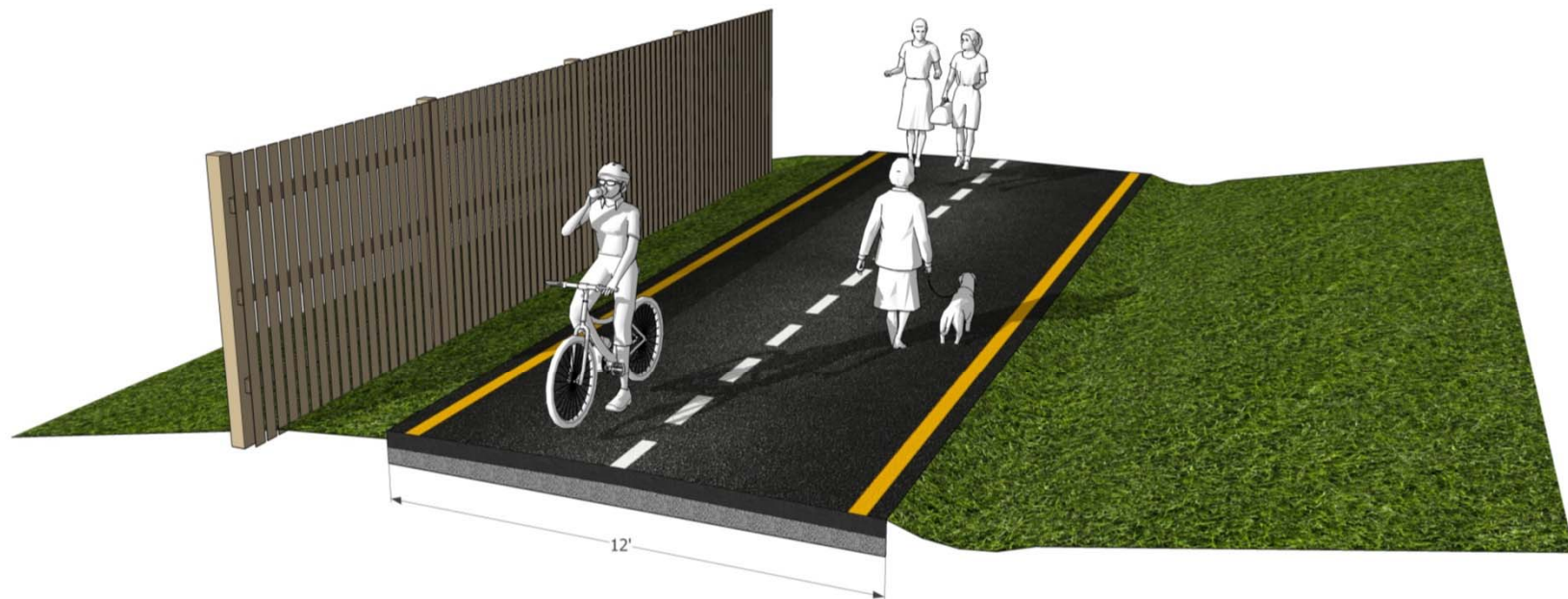
Screening and Fencing Alternatives



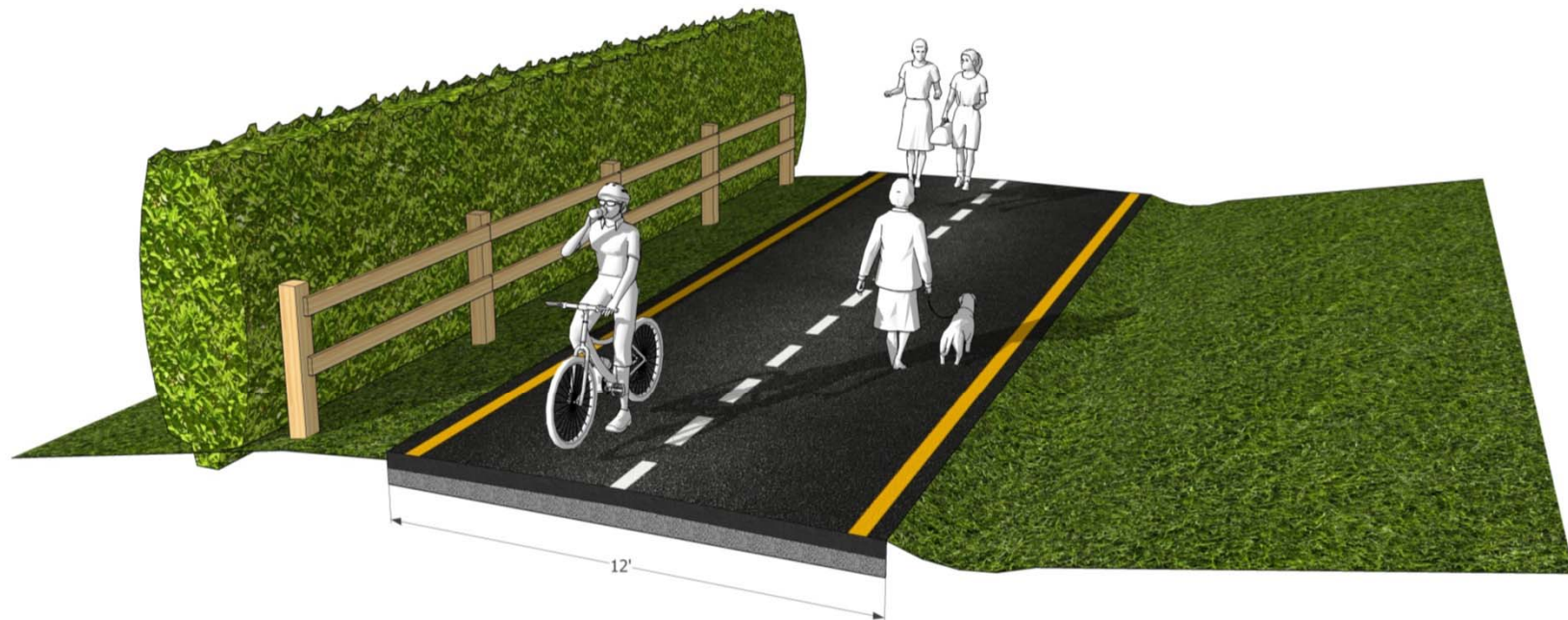
Screening and Fencing Alternatives



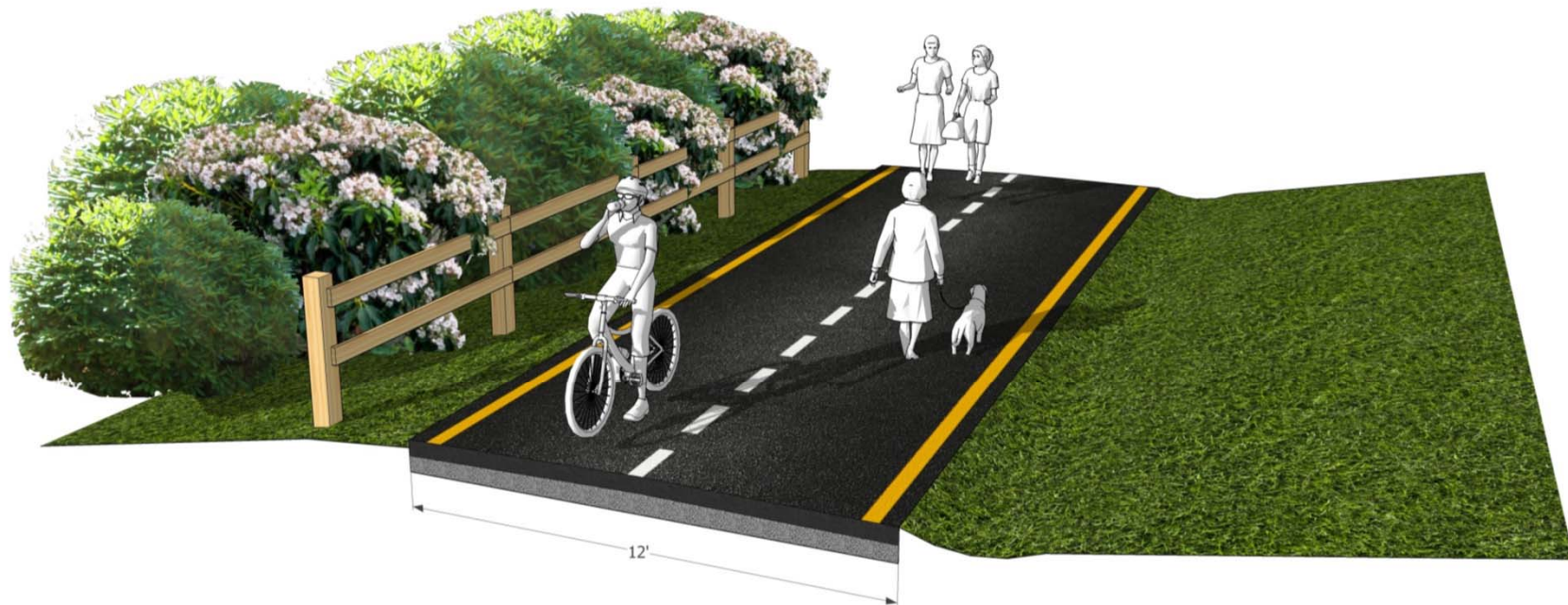
Screening and Fencing Alternatives



Screening and Fencing Alternatives



Screening and Fencing Alternatives



Screening and Fencing Alternatives



Road Crossing



Road Crossing



Examples of Trail Amenities

- **Exact Types and /or Styles of Amenities to be Selected During the Design Process**



Trash Receptacle



Bike Rack



Bench



Planters

Next Steps -Design Process (MassDOT)

- ✓ 25% Design Submittal Review Completed in January 2018
 - *Multi-disciplinary review*
- ☐ 25% Design Public Hearing - **Anticipating Summer 2018**

- ☐ 75% Design & Permitting – **Submittal date February 2019**
 - ☐ *Detailed design components*

- ☐ 100% thru PS&E (Bid Documents) – **Spring 2019 – Winter 2020**

- ☐ Advertisement for Construction – **Winter 2020 – Spring 2021**



Breakout Session

