



Lynnfield
MASSACHUSETTS

Lynnfield War Memorial Update June 1st 2022



War Memorial Committee History

From the Beginning, Until Current

1. War Memorial idea, developed in September 2017
2. War Memorial Web Site Built Dec 2017
3. The War Memorial Mission Statement completed:
 1. Original Narrative/Guidelines About the Memorial Proposal: Dec 2017
 1. Our agreement with the town, as we began committee meetings, our guidelines
4. Approved Site by the Town Selectmen (when we presented 4 designs, to the Selectmen, for final approval, at Town Hall Meeting, M-Street Conference Center)
 1. Site and designed approved by the Town Selectmen, June 2019
5. Sketch brief to the Selectmen, Voted by Committee, to build this design (Majority)
 1. Approved Design, voted three times by the committee to keep as design
 2. Approved Sketches of War Memorial Design
6. Sketch of land area to build, with in designated build area, in coordination with Conservation Office (Emily Cademartori) and Town Engineer (Charlie Richter). Once certified design is completed, will be presented to Conservation Committee, for final build location. Both feel with the area we designated; we should have no issues with approval by the Conservation Committee, approved on Feb 11th 2020



War Memorial Committee History

From the Beginning, Until Current (Continued)

9. Architect: Ron Ranere Architect Designs, Reading, contracted
 1. Finalize design to move forward in 2020
10. Architect: Ron Ranere Architect Designs, Reading, contracted
 1. Completed, June 2021
 2. Sent to Town Engineer for review, Dec 2021
11. Go before the Town Conservation Committee for final approval on build site (Town Select Board has already approved the site)
12. Applied for a grant from the state to assist
 1. Received fifty thousand dollars, needs to be spent by 1 July 2022
 2. Needs to be used to build the ground site (raising the current topography, and leveling the site, for the war memorial)
13. Paver Web site needs to be built
14. Begin donations and fund-raising campaign.
15. Review of names that will be authorized on the Memorial (Reviewing Committee)

Strategic Planning Committee

War Memorial Committee

Where to find us; Lynnfield Home Page

1. Lynnfield Home Page

2. Boards and Commissions

3. War Memorial

a. Meeting Schedule (Example: Every Other Month, Third Thursday of the Month)

b. Meeting Agenda and Minutes

c. Slides Presentations

d. Working Projects

All Slides and Minutes are posted to this Website





The War Memorial Mission Statement:

The Town of Lynnfield War Memorial Commission has a mission find a suitable piece of town real-estate for the future location of the town's War Memorial honoring service members and their families, submit for approval a design to the Town Selectmen, and to raise money through donations, fund raisers, grants, for the construction of the project, and a Memorial Maintenance Endowment Fund to maintain the memorial preservation.

The Town of Lynnfield War Memorial is a monument to honor the memory of Lynnfield's men and women who demonstrated a willingness to serve and fight to defend our way of life from all wars to the present, and the future. The War Memorial Committee is to ensure that the Town of Lynnfield Veterans Memorial in our town will be maintained in perpetuity, even in those times when public funds are scarce or not available for maintenance or repair; to assist with ceremonies at the Memorial.

Narrative About the Memorial Proposal

War Memorial Committee

- ❑ It needs to be in the center of the town where all of the people of Lynnfield and its visitors can gather to visit. The Memorial will be located across the street from main common.
- ❑ This memorial needs to be a stand alone. It can not overpower the center of town but compliments it. It must blend with the natural character of the town. We want it in the center of the town, its natural center of gravity. A place where the town is proud to show its Patriotism and commitment to its service members Past, Present and Future. Our proposal has been engineered with landscaping and brickwork that is seen throughout the town. It will have the proper landscaping to be in our great center.
- ❑ It will be a teaching memorial that tells the story of the town and the sacrifices the town's people have endured throughout history.
- ❑ It will be one memorial that will cover all the major wars that anyone from Lynnfield served in.
- ❑ It will tell a brief narrative of the of history of each combat operation, a map of where it took place, and the names of all the men and women who served from this town.
 - ❑ We will have more than enough help, that has already come forward, to gather the Information for the plaques and will ensure this memorial will be a town effort.
 - ❑ The plaques will be sets of three for each war (map of the area, narrative of the war, those who served in that conflict)

Narrative About the Memorial Proposal

War Memorial Committee

- ☐ It will have complete accessibility and be handicap accessible.
- ☐ It will have the ability to not only capture what has happened to date, but to expand if needed with additional plaques.
- ☐ We will not move or alter any existing memorial
- ☐ They will be exchangeable if a mistake was made, or if in time, someone comes forward with a name that was missed.
- ☐ Plaques will be made of brushed aluminum for cost, ability to engrave easily and appearance.
- ☐ All services will have their service plaque represented. (three versions proposed)
- ☐ The stone walkway will be engraved stones that families can purchased to commemorate their loved ones that served, and to all those that contributed to the cause.
- ☐ It will be lit at night with landscaping style lights showing an eternal honor for those who have served.
- ☐ It will have an information board with details of the memorial as well as upcoming events.

Committee Members:

Joseph Connell (Chairman)

Bruce Segal

Thomas Bogart

John Harrigan

Charles Leach

Nicholas Secatore

Ron Nutter

Paul Donato

Jason Kimball

Approved Location

War Memorial Committee

Approved Site Location and Design, approved by Selectmen
Street View

Nothing will be blocking the view of the Memorial as you drive down Summer Street
Night lighting will illuminate the memorial as you drive by



Approved Location, Aerial View

War Memorial Committee



Town Hall

Town Hall
Parking Lot

Approved
Site

Approved Location, with Memorial Foot Print

War Memorial Committee

Town Hall
Parking Lot

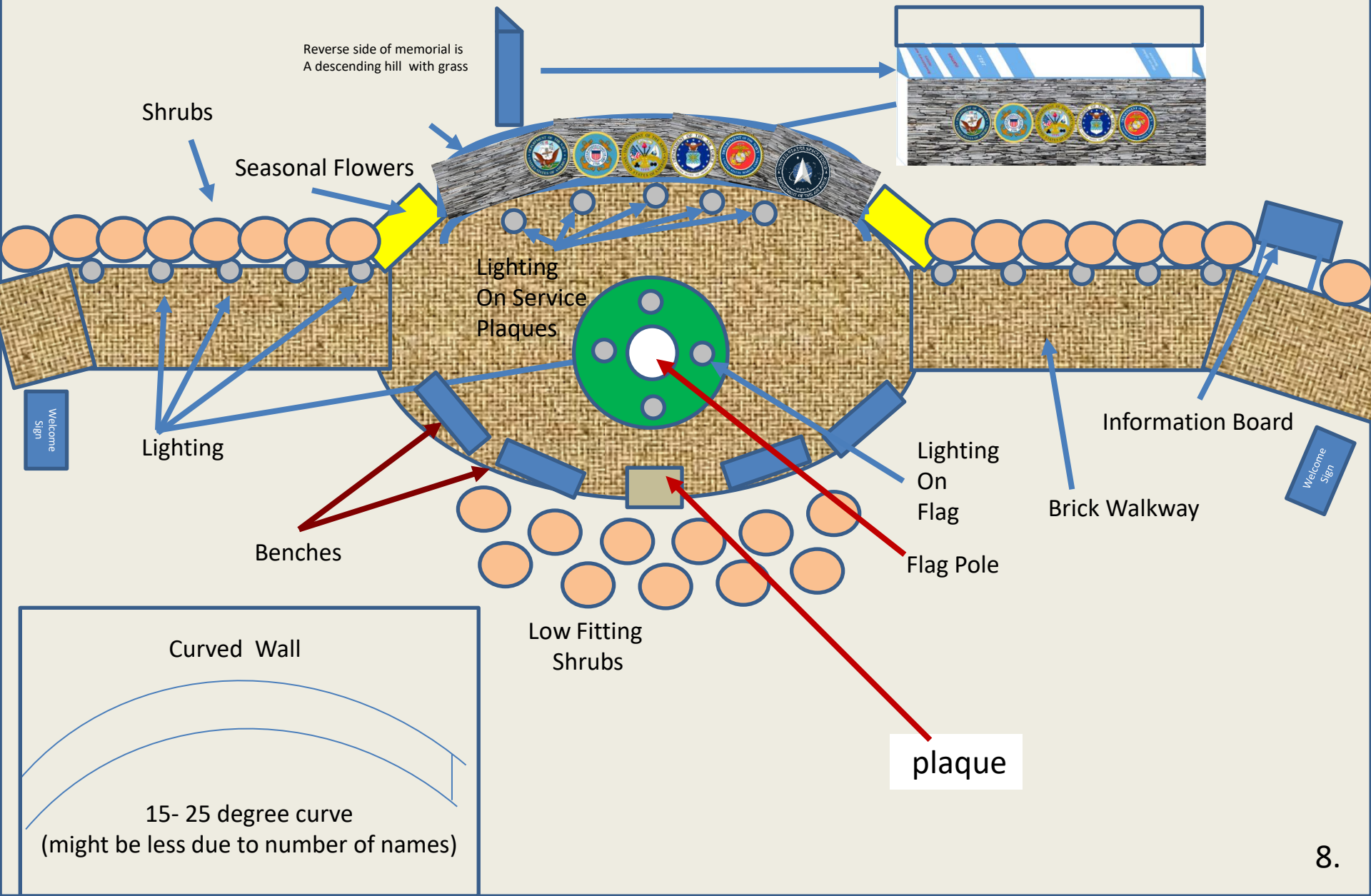
2 Spots
Handicap
Parking

Approved Site
Footprint



Approved Design, Rough Sketch

War Memorial Committee



Approved Design, Rough Sketch, main Portion of Memorial

War Memorial Committee



Side View of Memorial

Curved Wall

15- 25 degree curve
(might be less due to number of names)

Wall Design
Dimensions

6 Feet

Cap
4 inches

20 inches

20 inches

5 Feet 8 inches in Height

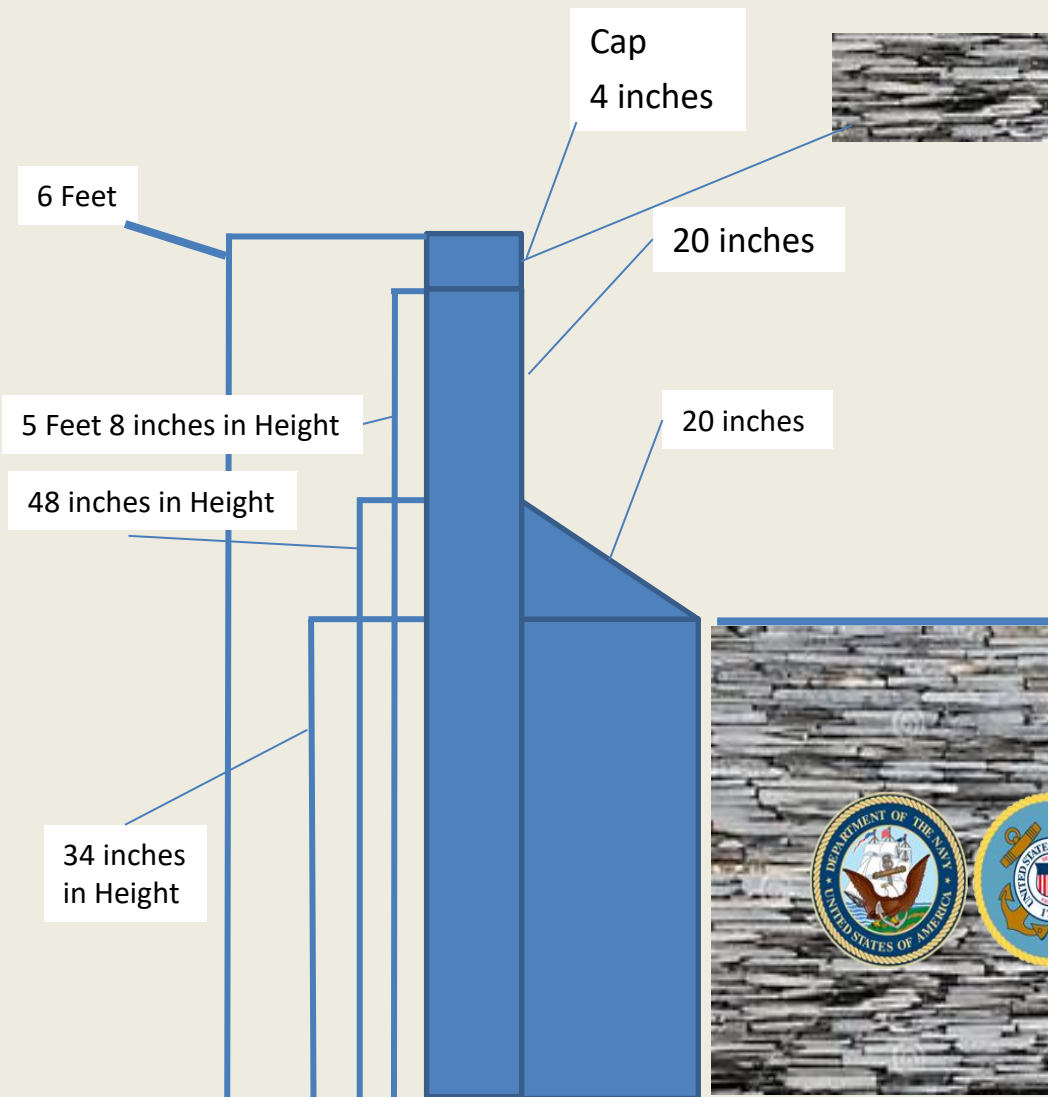
48 inches in Height

34 inches
in Height

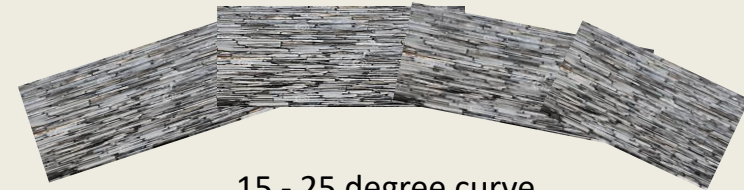


Wall Design

Side View of Memorial



Curved Wall



15 - 25 degree curve
(might be less due to number of names)



Wall Metal Plates Design

Engraved Plaques (set of three per conflict)

- Educational History, Facts
- Map of Battle Area
- Names of Veterans



Service Plaques



Lower portion of the Wall
Service Plaques

War Memorial Plates Designs

Plates are 20 inches Height
20 inches Width

Plaques: A series of three educational
plaques for each conflict for the people of
Lynnfield
On the Plaques : Brief History, Map of
Conflict, Names of Lynnfield Veterans

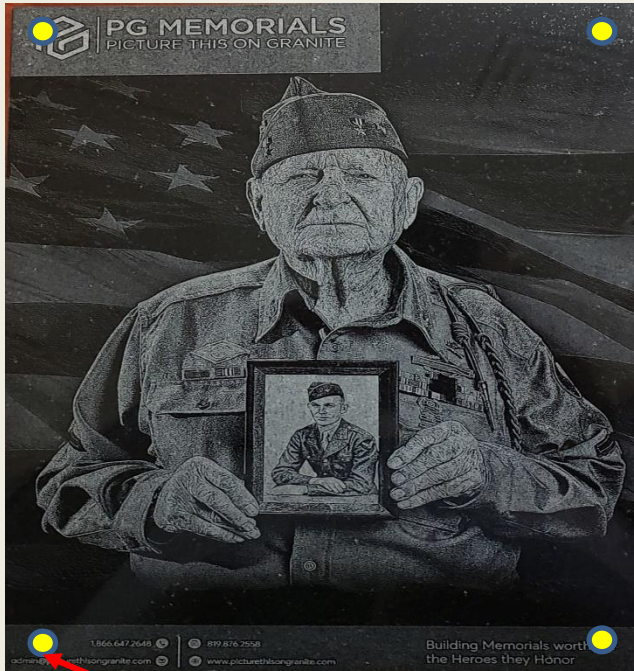
Wall Plate Design



Plaques: There will
be a set of Plaques
for every War that
someone from
Lynnfield served in.
Revolutionary War
to present (and will
be able to capture
future wars.



Example of the level of detail we can go to, of the Narrative and Map of the areas the War took place



The Revolutionary War
Began on April 19th 1775 at what is know as the
North Bridge, Located 14 miles from here, in the
Town of Concord.

The War ended on (date), with the following
casualties for the war
Wounded in Action
Killed in Action
Missing in Action

Map of where the Revolutionary War took
place

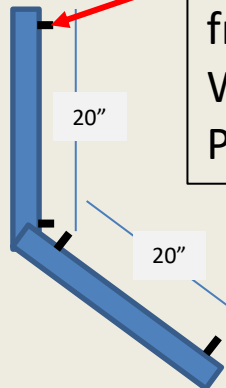
Here are the names of those from
Lynnfield who severed and fought during
Revolutionary War

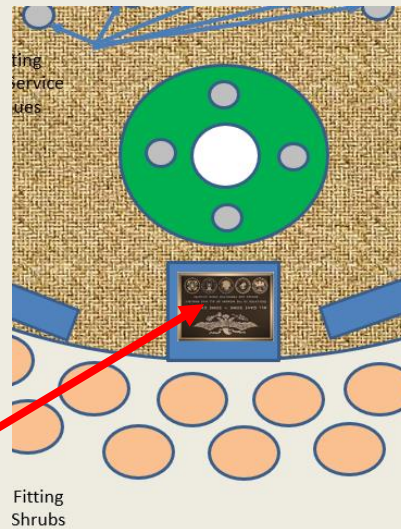
Name, US Army
Name, Navy
Name, Air Force
Name, Marines

Here are the names of those from Lynnfield
who severed and fought during
Revolutionary War

Name, US Army
Name, Navy
Name, Air Force
Name, Marines

Anchor Bolts
from Concrete
Wall through
Plates

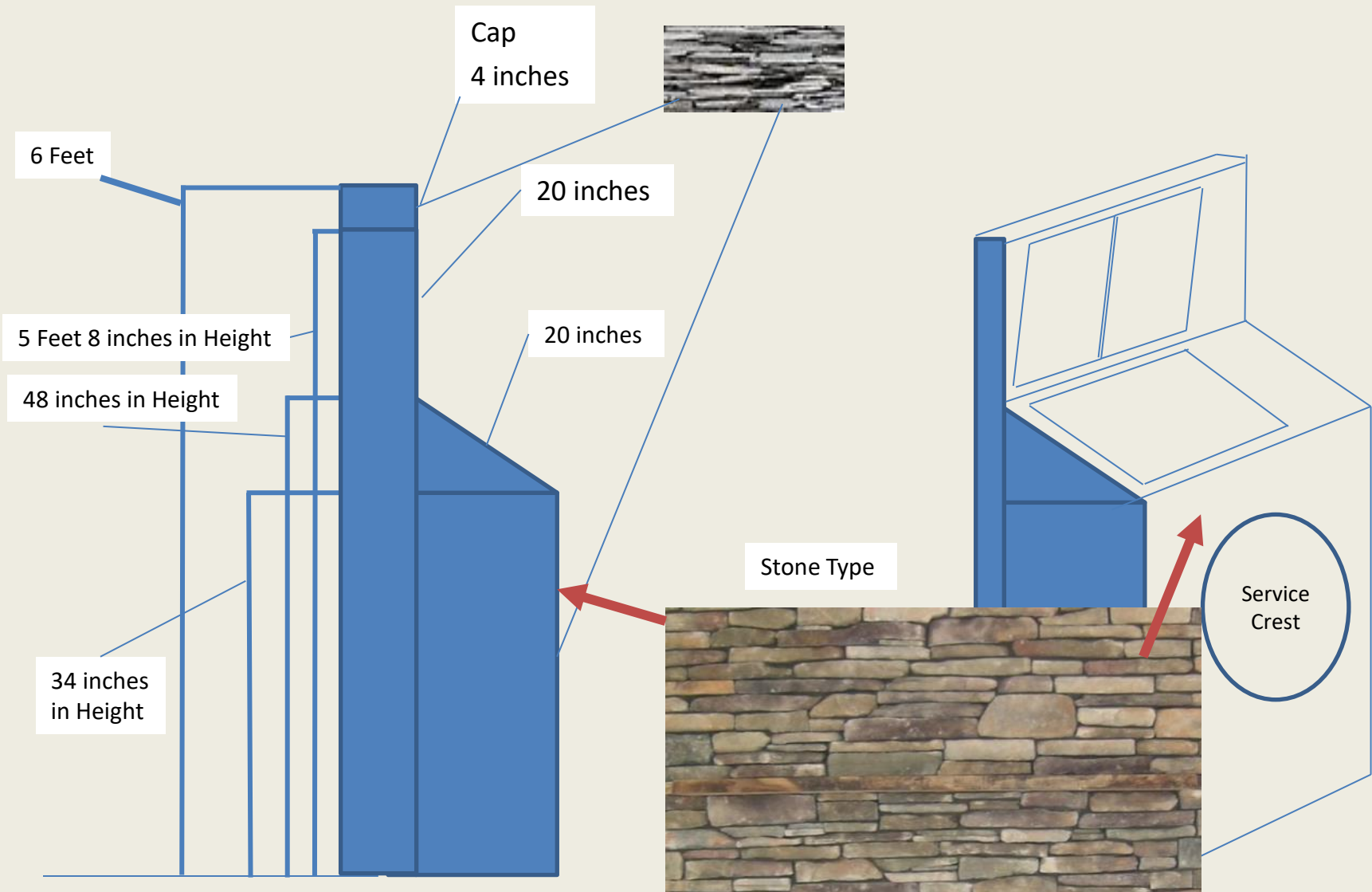




Lower Plaque Design
1 Foot, 6 inches off Ground



Dimensions



Approved Design, Rough Sketch, as it sits on Engineered Survey Design

Option 2 (55' x 90')

Lot approved on 2-11-2020

Back Side Limit Line

80 feet of Wall
40 Plates
10 Wars

This size was picked

Approved Design, Rough Sketch, as it sits on Engineered Survey Design

Option 2 (55' x 90')

Lot approved on 2-11-2020

Back Side Limit Line

80 feet of Wall
40 Plates
10 Wars

This size was picked

Approved Design, Rough Sketch, as it sits on Engineered Survey Design

Option 2 (55' x 90')

Lot approved on 2-11-2020

Back Side Limit Line

80 feet of Wall
40 Plates
10 Wars

This size was picked

Approved Design, Rough Sketch, as it sits on Engineered Survey Design

Option 2 (55' x 90')

80 feet of Wall
40 Plates
10 Wars

This size was picked

Lot approved on 2-11-2020

Back Side Limit Line

Approved Design, Rough Sketch, as it sits on Engineered Survey Design

Option 2 (55' x 90')

Lot approved on 2-11-2020

Back Side Limit Line

80 feet of Wall
40 Plates
10 Wars

This size was picked

Approved Design, Rough Sketch, as it sits on Engineered Survey Design

Option 2 (55' x 90')

Lot approved on 2-11-2020

Back Side Limit Line

80 feet of Wall
40 Plates
10 Wars

This size was picked

Side View of Memorial

Curved Wall

15- 25 degree curve
(might be less due to number of names)

Wall Design
Dimensions

6 Feet

Cap
4 inches

20 inches

20 inches

5 Feet 8 inches in Height

48 inches in Height

34 inches
in Height



Wall Metal Plates Design

Engraved Plaques (set of three per conflict)

- Educational History, Facts
- Map of Battle Area
- Names of Veterans



Service Plaques

War Memorial Plates Designs

Wall Metal Plates Design

Engraved Plaques (set of three per conflict)

- Educational History, Facts
- Map of Battle Area

Names of Veterans

Plates are 20 in Height, 20 Inches Width

**Plates Should Match
20 x 20
In Width and Height**



Service Plaques



Example of the level of detail we can go to, of the Narrative and Map of the areas the War took place

War Memorial Plates Designs

Plates are 20 inches Height
20 inches Width

Plaques: A series of three educational
plaques for each conflict for the people of
Lynnfield
On the Plaques : Brief History, Map of
Conflict, Names of Lynnfield Veterans

Wall Plate Design

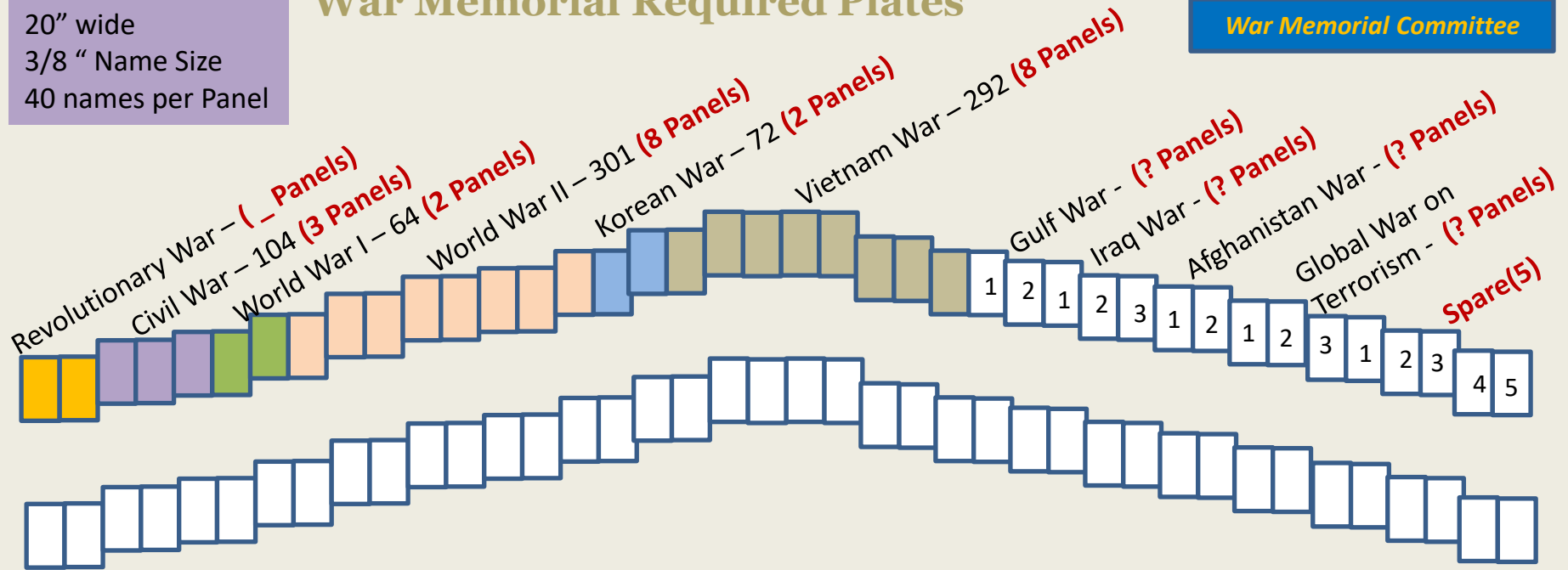


Plaques: There will
be a set of Plaques
for every War that
someone from
Lynnfield served in.
Revolutionary War
to present (and will
be able to capture
future wars.

20" wide
3/8 " Name Size
40 names per Panel

War Memorial Required Plates

War Memorial Committee



Here's a count on the names that I have so far

Revolutionary War – (1 Panels)

Civil War – 104 (3 Panels)

World War I – 64 (2 Panels)

World War II – 301 (8 Panels)

Korean War – 72 (2 Panels)

Vietnam War – 292 (8 Panels)

Gulf War - Unknown at this time (1 Panels)

Iraq War - Unknown at this time (1 Panels)

Afghanistan War - Unknown at this time (1 Panels)

Global War on Terrorism - Unknown at this time (1 Panels)

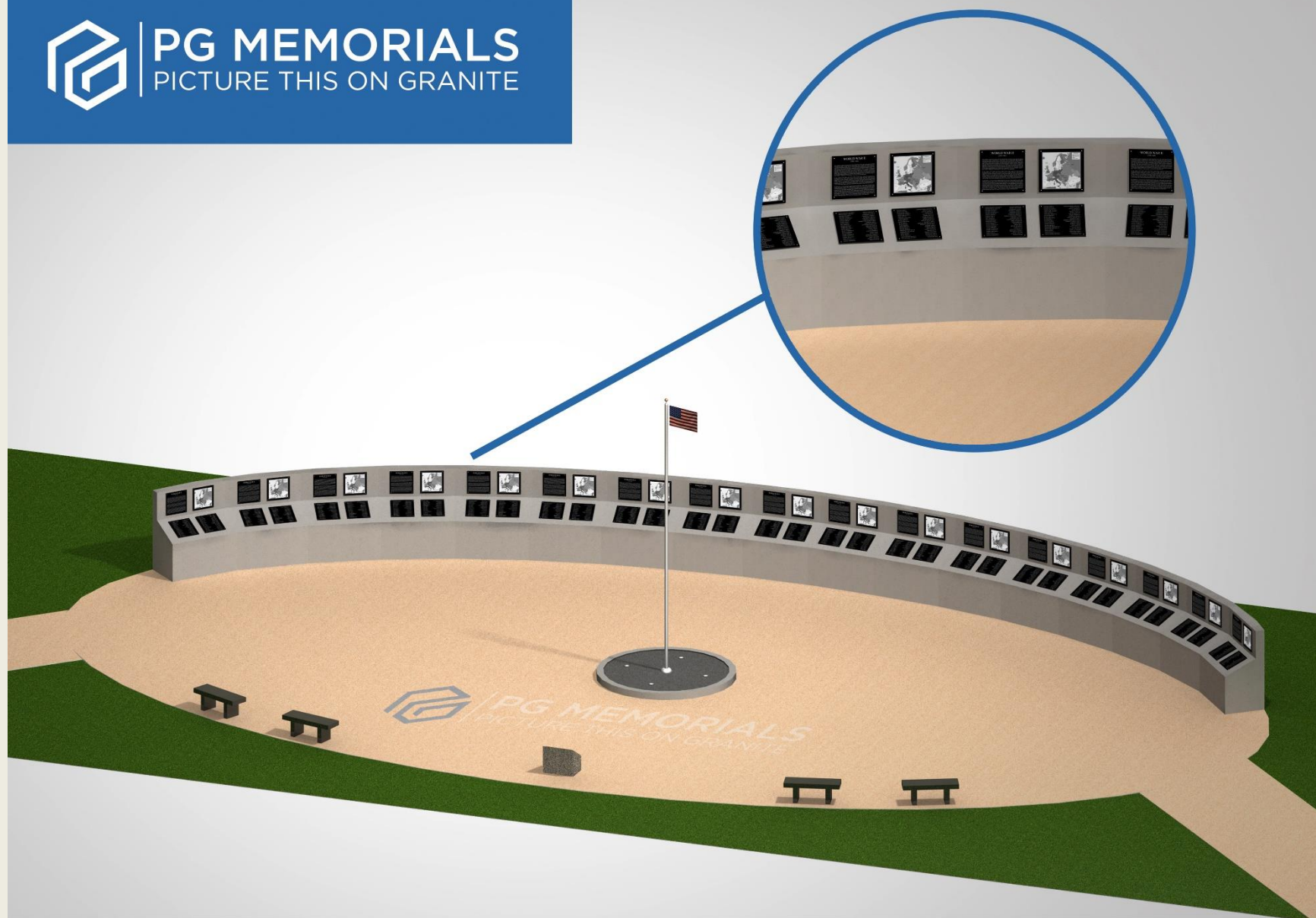
Total (So Far) = 23

Major American Wars

- The Revolutionary War (1775-1783)
- American Civil War (1861–1865)
- World War I (1914-1918)
- World War II (1939-1945)
- Korean War (1950-1953)
- Vietnam War (1960-1975)
- Desert Shield Desert Storm War (1990-1991)
- Afghanistan War (2001 – Present)
- Iraq War (2003-2011)
- Global War on Terrorism (2001 -)



PG MEMORIALS
PICTURE THIS ON GRANITE



1.866.647.2648



info@picturethisongranite.com



819.876.2558



www.picturethisongranite.com



Building Memorials worthy of
the Heroes they Honor

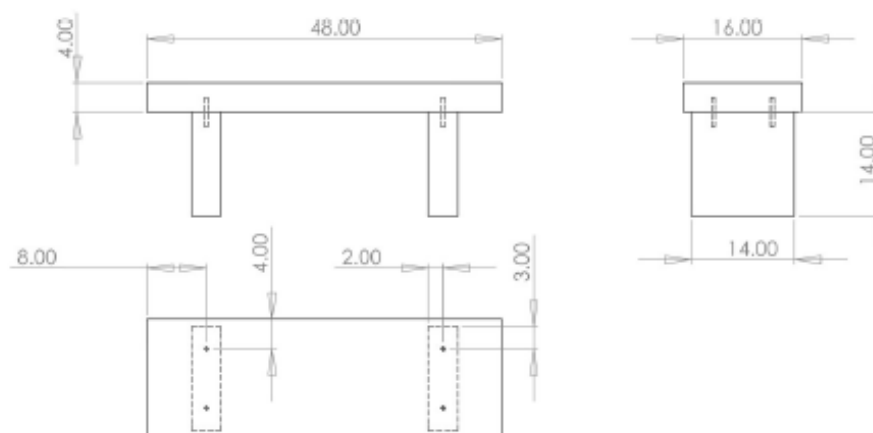


Standard Bench

Black granite

Polished finish

Approx 540lbs



Lynnfield War Memorial, MA

Guarantee

P.G. Order Terms And Conditions

War Memorial Plates Designs

Working Numbers for required Panels

Required Panels for the War Memorial, Estimated Count
8 inch names
3/4" Blocks

Here's a count on the names that I have so far
Revolutionary War – Unknown at this time
Civil War - 104
World War I - 64
World War II - 301
Korean War - 72
Vietnam War – 292
Gulf War - Unknown at this time
Iraq War - Unknown at this time
Afghanistan War - Unknown at this time
Global War on Terrorism - Unknown at this time

Example of Lettering and spacing

3/4"

Major American Wars

- The Revolutionary War (1775-1783)
- American Civil War (1861–1865)
- World War I (1914-1918)
- World War II (1939-1945)
- Korean War (1950-1953)
- Vietnam War (1960-1975)
- Desert Shield Desert Storm War (1990-1991)
- Afghanistan War (2001 – Present)
- Iraq War (2003-2011)
- Global War on Terrorism (2001 -)

War Memorial Plates Designs

20 "



Name is 3/8th " in Height, total Block is 3/4" per name

Option Picked

Left Adjust

Right Adjust

John F. Smith

John F. Smith

William R. Jones

William R. Jones

George W. Bush

George W. Bush

23 per Column

Two Columns per Plate = 46

(currently, we know of 833 Names)

Count on 1000 names for Planning

22 Panels required

With Wars being uneven, count on **28 Panels**

Add 10 major Wars and Ends = 11

total Panels = 39

20 "

War Memorial Plates Designs, Options and Lengths

Option Picked – 3/8" Names

29 Panels

Each Panel, **20"** wide

10 identified wars

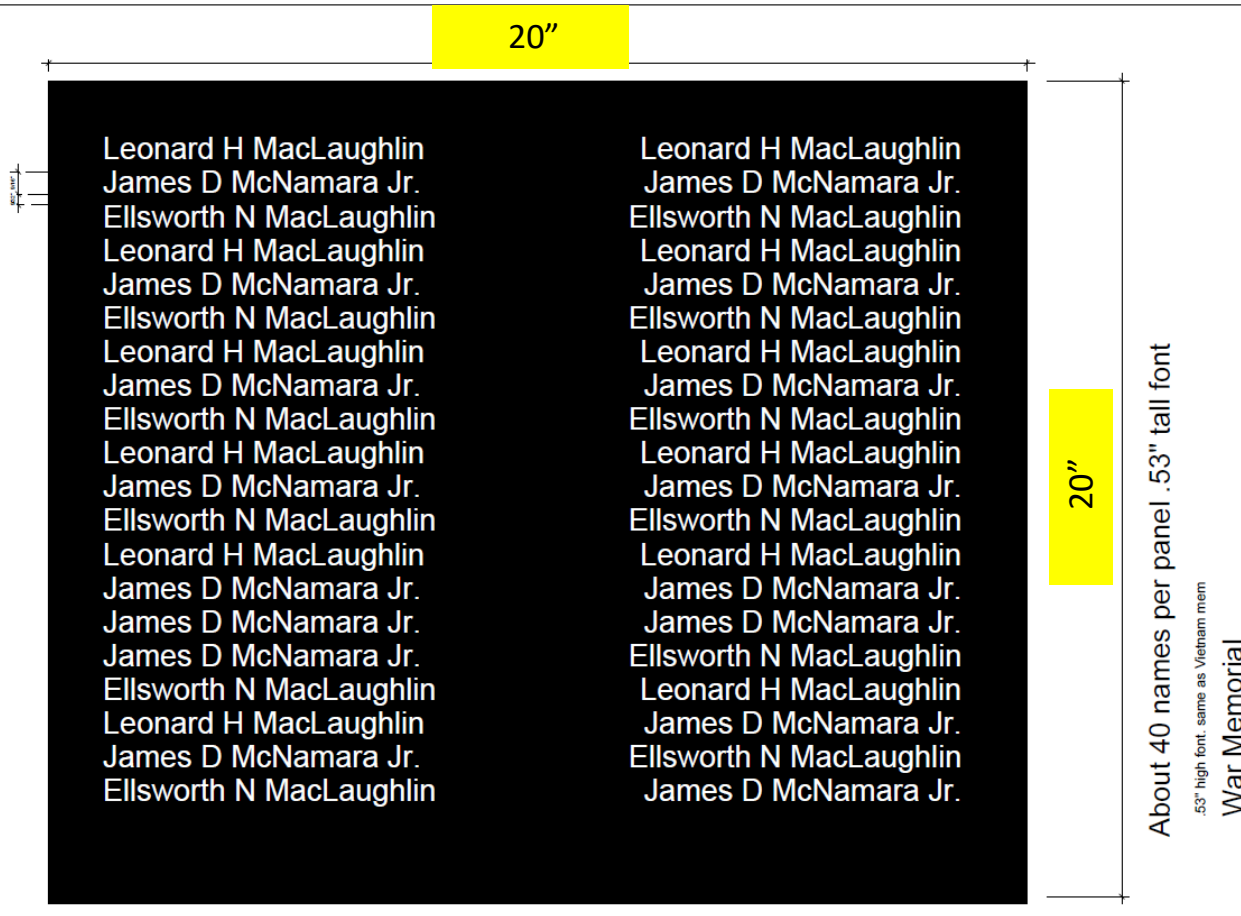
A Panel between each War, and at each end = 11

29 panels, with (at each end and spacers between wars) 11 Blank Panels = 39

39 panels at 20" wide = 65 Feet

20" wide
3/8 " Name Size
40 names per Panel

Ranieri Associates Inc.
Architecture & Interiors
1000 1st Avenue
Reno, NV 89507
T: 617 562 2111
www.4000000.com



Option 4 – 3/8” Names

29 Panels

Each Panel, **20”** wide, **20”** in Height

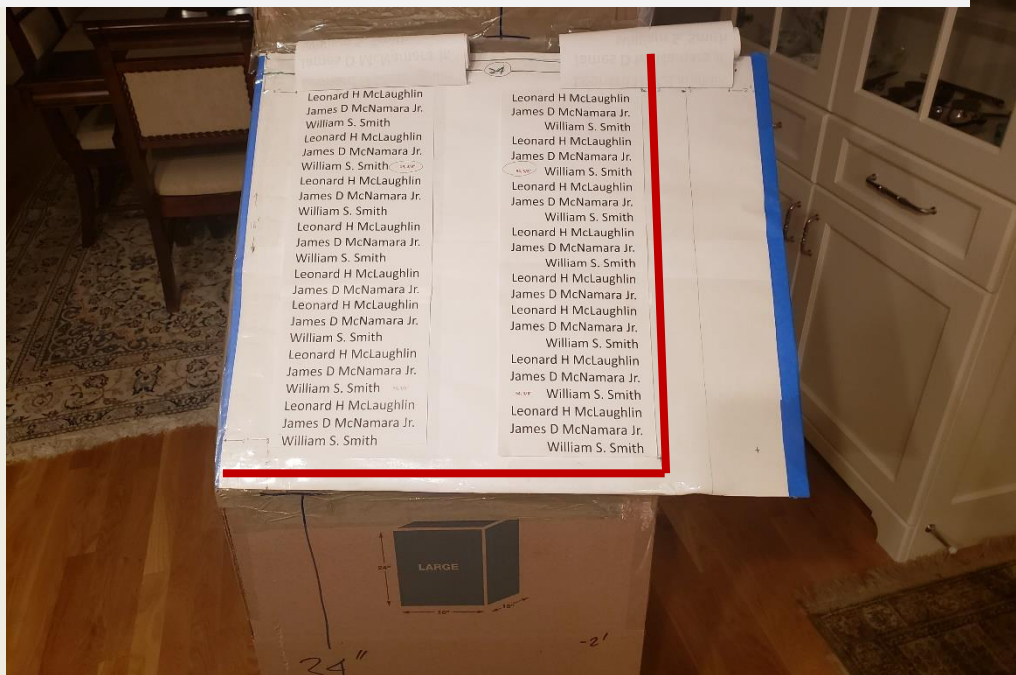
10 identified wars

A Panel between each War, and at each end = 11

29 panels, with (at each end and spacers between wars) 11 Blank Panels = 39

39 panels at 20” wide = 65 Feet

War Memorial Committee



Web Site: https://www.Lynnfield.ma.us/sites/g/files/vyhlf3986/f/file/file/wwii_paverapplication_6x12_fillable.pdf

Veterans Walk of Remembrance Paver Donation



Donors who contribute \$300 (6" x 12") or \$500 (12" x 12") to the Veterans Walk of Remembrance Paver project will have an opportunity to have an engraved granite paver in the name of service men or women placed in the Veterans Walk of Remembrance. These donations are separate from the any contributions made to the Donor Honor Roll.

The paver can be donated in honor of a service member of the armed forces, past or present, without regard to Wakefield residency.

The placement of the paver(s) will be determined after the committee receives payment in full. Although donors may be able to select a location according to the enclosed grid, the location will be allocated in the order in which the payment was received; i.e.: first-come, first-served.

6" x 12" Paver - \$300

Each 6" x 12" paver can have a maximum of five (5) lines of text;

Examples:

A: One (1) line of 1" text and 4 lines of 3/4" text.

B: Two (2) lines of 1" text, can only accommodate a maximum of 4 lines of text; for example, 2 lines of 1" and 2 lines of 3/4".

1" text will allow a maximum of 15 characters per line.*

3/4" text will have a maximum of 21 characters per line.*

(*Spaces and punctuations are to be counted as characters)

Sample A engraving (6"x 12")

	15															21						
	↓															↓						
Line 1	I	N		M	E	M	O	R	Y		O	F		P	F	C						1" or 3/4"
Line 2	J	O	H	N		J		M	U	R	P	H	Y									1" or 3/4"
Line 3	2	6	t	h		C	O	A	S	T		A	R	T	I	L	L	E	R	Y		1" or 3/4"
Line 4	W	W	I																			1" or 3/4"
Line 5	M	U	R	P	H	Y		F	A	M	I	L	Y									1" or 3/4"

Please print legibly on order form below (wording will be centered by engraver)

	15															21						
	↓															↓						
Line 1																						1" or 3/4"
Line 2																						1" or 3/4"
Line 3																						1" or 3/4"
Line 4																						1" or 3/4"
Line 5																						1" or 3/4"

Donor Name: _____ Telephone#: _____

Address: _____

City: _____ State: _____ Zip: _____

Payment enclosed \$ _____

Payment made online \$ _____

Please see reverse side.

Make checks payable to: Wakefield World War II Memorial Fund Town of Wakefield
c/o Town Administrator
William J. Lee Town Hall, 1 Lafayette Street, Wakefield, MA 01880
www.wakefield.ma.us/veteransmemorial

Administrative Use Only

Deposit: _____

Paid in Full _____

Paver # _____

Veterans Walk of Remembrance Paver Donation



Notes:

The World War II Memorial Committee has the right to reject any engravings deemed inappropriate.

Additional order forms may be downloaded at www.wakefield.ma.us/veteransmemorial

After payment is received in full for the paver, there will be an acknowledgement certificate sent to the donor for verification of engraving information.

You will be notified as to when you may come to the Town Hall to choose your paver location. This process follows the order of when payment was received.

Example of setting up paver purchases

Example of Paver Web Site, types and Colors

Web Site to View

https://polarengraving.com/veterans-memorial-bricks/?gclid=Cj0KCQiA3rKQBhCNARIsACUEW_Y4fdC2QqtE9tX0mdwSno8t105rsleHl4j-jStNo3VqvSNx3GK5GhcaAh3gEALw_wcB

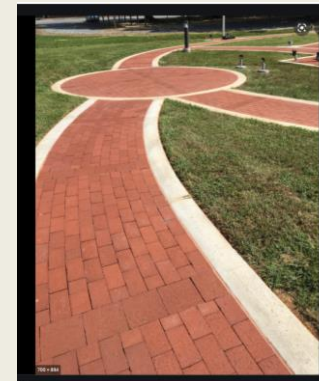
Examples of Gray with Black Lettering



Example of different sizes

[illegible]

Examples of Maroon/Red brick with Black Lettering



Lynnfield War Memorial

S. Common St
Lynnfield MA

8.3.21

Construction Drawings

 Ranere Associates Inc.
Architecture & Interiors
74 Edgemont Ave Reading MA 01867
T: 617.818.4586
www.ra-i-architects.com



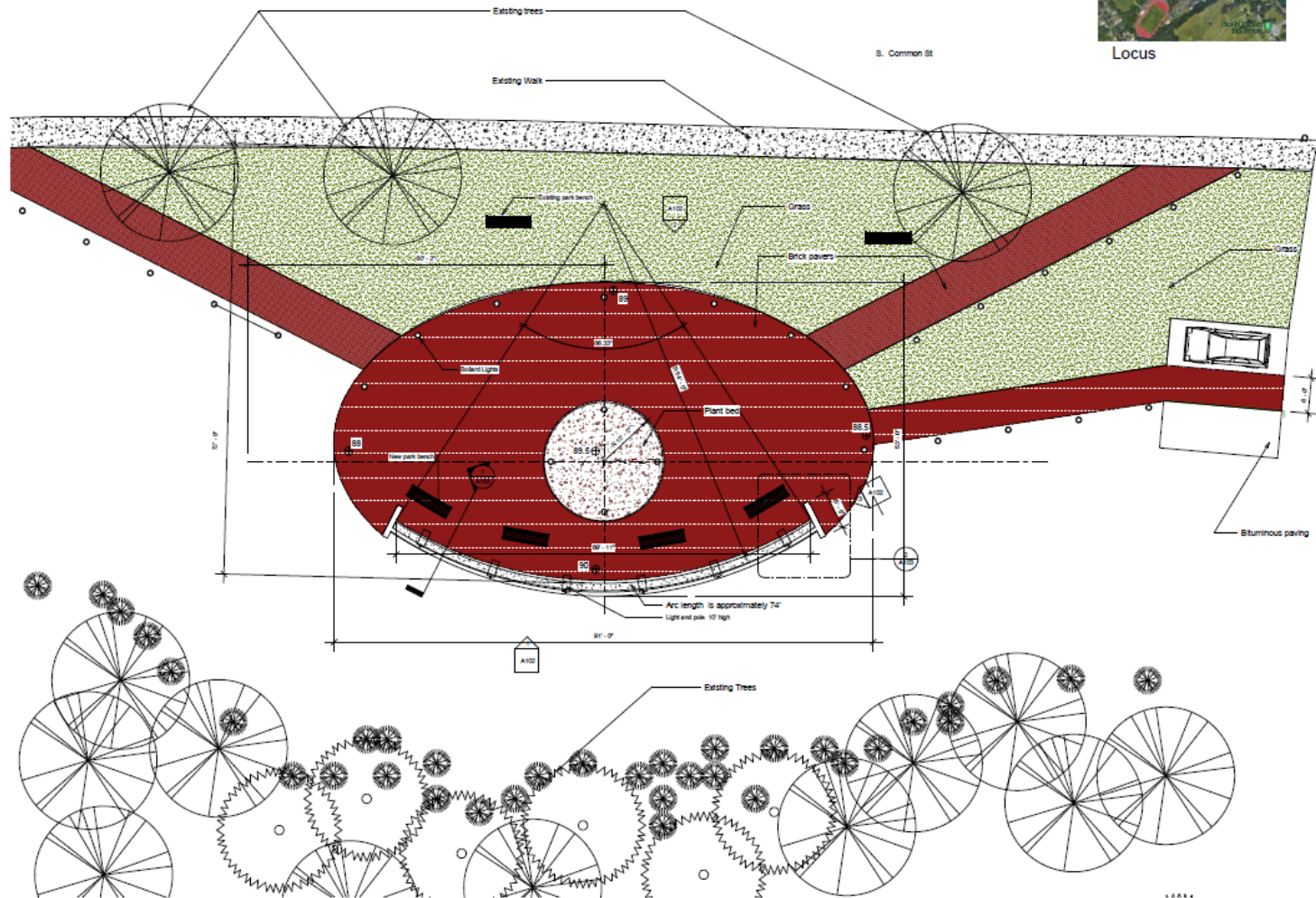
General Notes

1. All grading and civil details to be done by Civil Engineer
2. All electrical shall be done by an electrical engineer
3. Precast panels shall be structurally designed and built by SPCL, precursors of PSC Precast Specialties Corp., 996 Adams Street, P.O. Box 96, Abington MA 02551

Sheet List	
Sheet Number	Sheet Name
A101	Title Sheet
A102	Site Plan
A103	Elevations
A104	Sections and Details

Finished Architectural Design

War Memorial Committee



Locus



Ranere Associates Inc.
Architecture & Interiors
74 Edgewood Ave.
Reading, MA 01867
T: 617-542-2111
www.ranereassociates.com

CONSULTANTS
Consultants

DRAWN BY
Author
DATE
8.3.21
NO. REVISION DATE BY

PROJECT
Lynnfield
War
Memorial

S. Common St
Lynnfield, MA



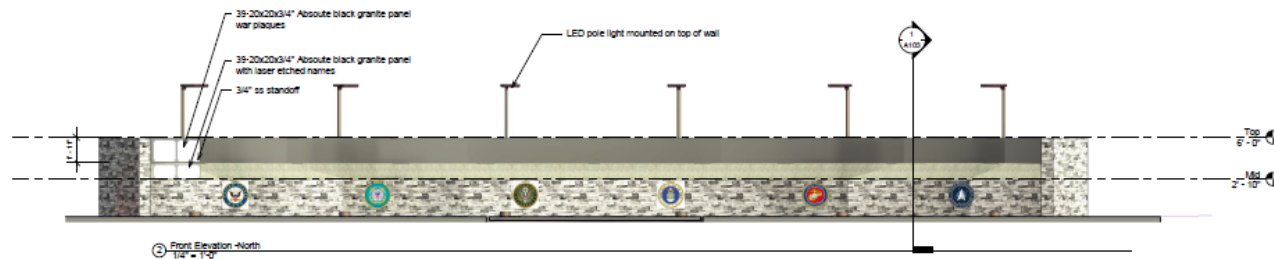
DRAWING
Site Plan

SCALE
1/8" = 1'-0"

A101

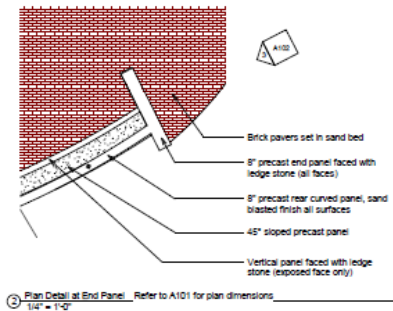
SHEET
Construction
Drawing

War Memorial Committee

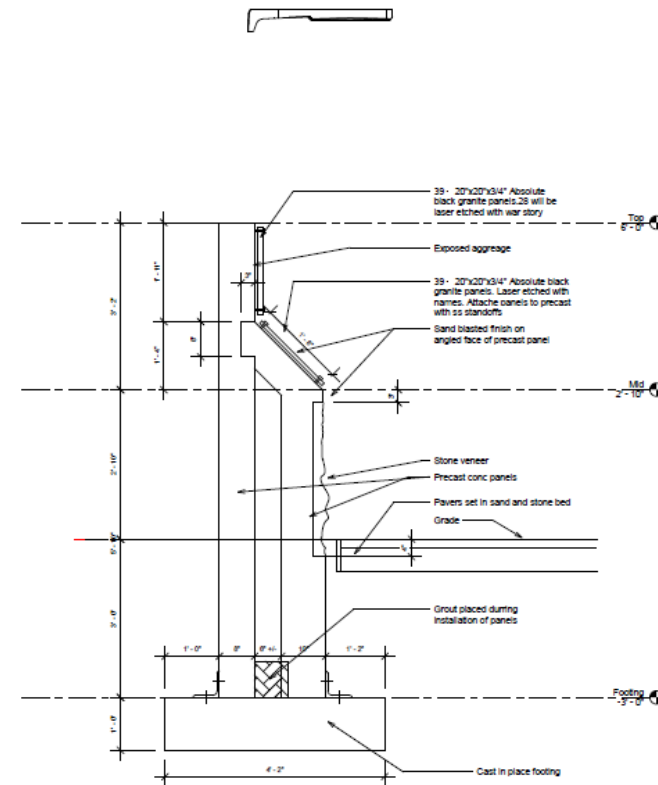


Finished Architectural Design

War Memorial Committee



② Plan Detail at End Panel Refer to A101 for plan dimensions
1/4" = 1'-0"



① Section I
1/2" = 1'-0"



Ranere Associates Inc.
Architecture & Interiors
74 Glenmont Ave.
Reading MA 01867
T: 617-542-2111
www.ra-architects.com

CONSULTANTS
Consultants

DRAWN BY
Author

DATE
8.3.21

NO. REVISION DATE BY

PROJECT

Lynnfield
War
Memorial

S. Common St
Lynnfield MA



DRAWING
Sections and
Details

SCALE
As Indicated

A103

SET
Construction
Drawings

**Required Memorial Site Prep, to be Finished by 1 July 2022
Due to yearly water pooling issues and concerns**

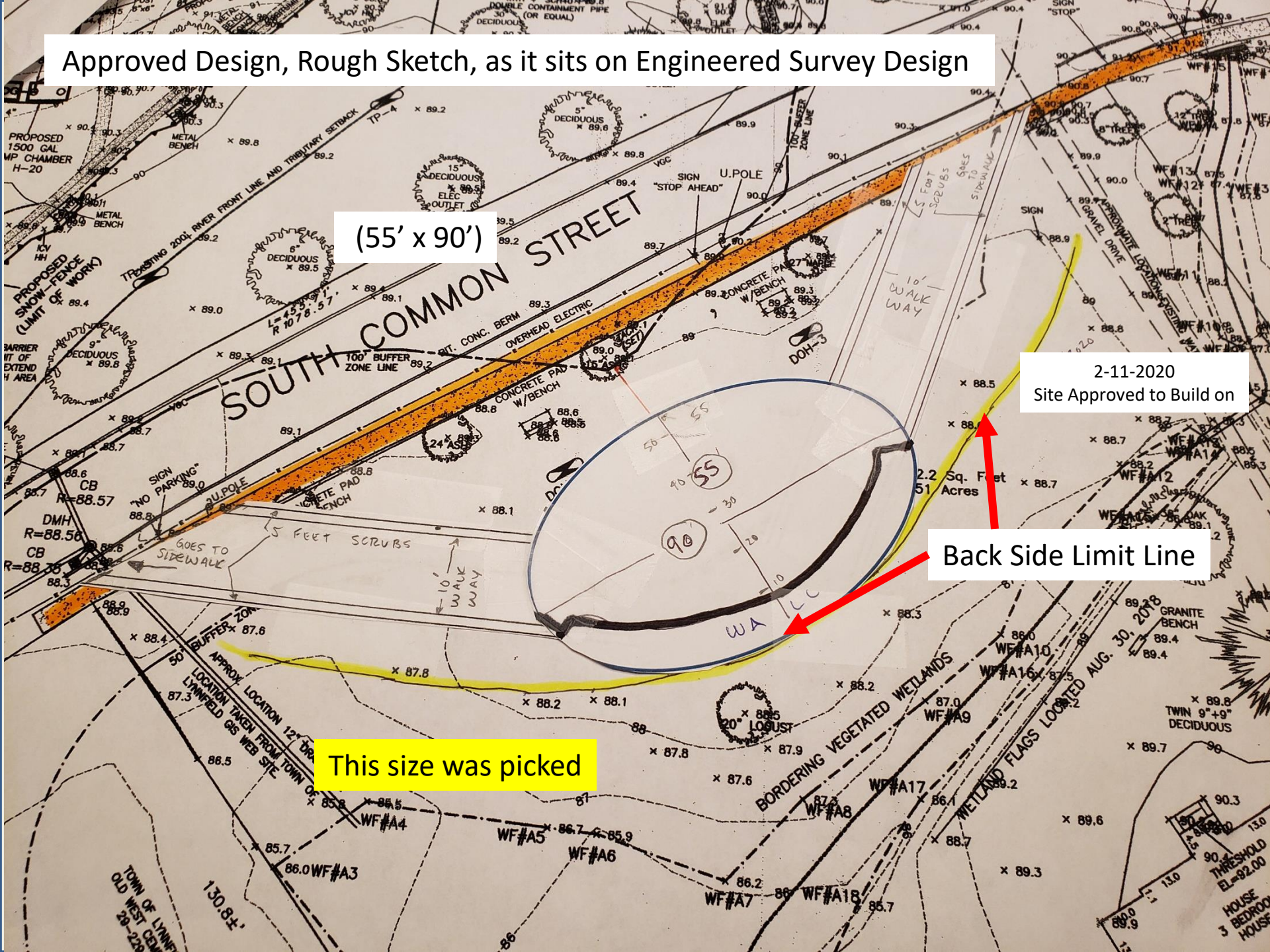
Approved Design, Rough Sketch, as it sits on Engineered Survey Design

(55' x 90')

2-11-2020
Site Approved to Build on

Back Side Limit Line

This size was picked



Scope Of Work, Memorial Site Prep

1) The site looks to be in a protected area. Small creek behind, cemetery on one side

Not a problem

- LEC is a consultant in Wakefield that could handle that process.

2) looks to me the finish grade of pavers should be +/- Elevation 89.5 feet.

3) Area to be prepared for construction is +/- 12,500 square feet.

4) construction sequence

A) Wetland protection (silt fence)

B) Remove top soil

(+/- 500 cubic yards)

C) place and compact

(+/- 710 cubic yards gravel base)

Yearly Winter and Spring Water Build up

War Memorial Committee



Yearly Winter and Spring Water Build up

War Memorial Committee



Yearly Winter and Spring Water Build up

War Memorial Committee



Yearly Winter and Spring Water Build up

War Memorial Committee



Yearly Winter and Spring Water Build up, Level of Sidewalk

War Memorial Committee



Yearly Winter and Spring Water Build up

War Memorial Committee

